



**UNIVERSITY
OF LONDON**
**INSTITUTE
IN PARIS**

Living in Paris - 2023 JDR

london.ac.uk/institute-in-paris

Overview



- Do some research on areas / arrondissements.
- Decide on your priorities (space, travel time, type of accommodation).
- Plan a budget to determine what rent you can afford.



- Studio flat in hall of residence (e.g. Nexity, Estudines)
- Individual private accommodation
- Flat sharing
- Living + working arrangements
- Room or studio at Cité internationale universitaire
- Private hostel for students



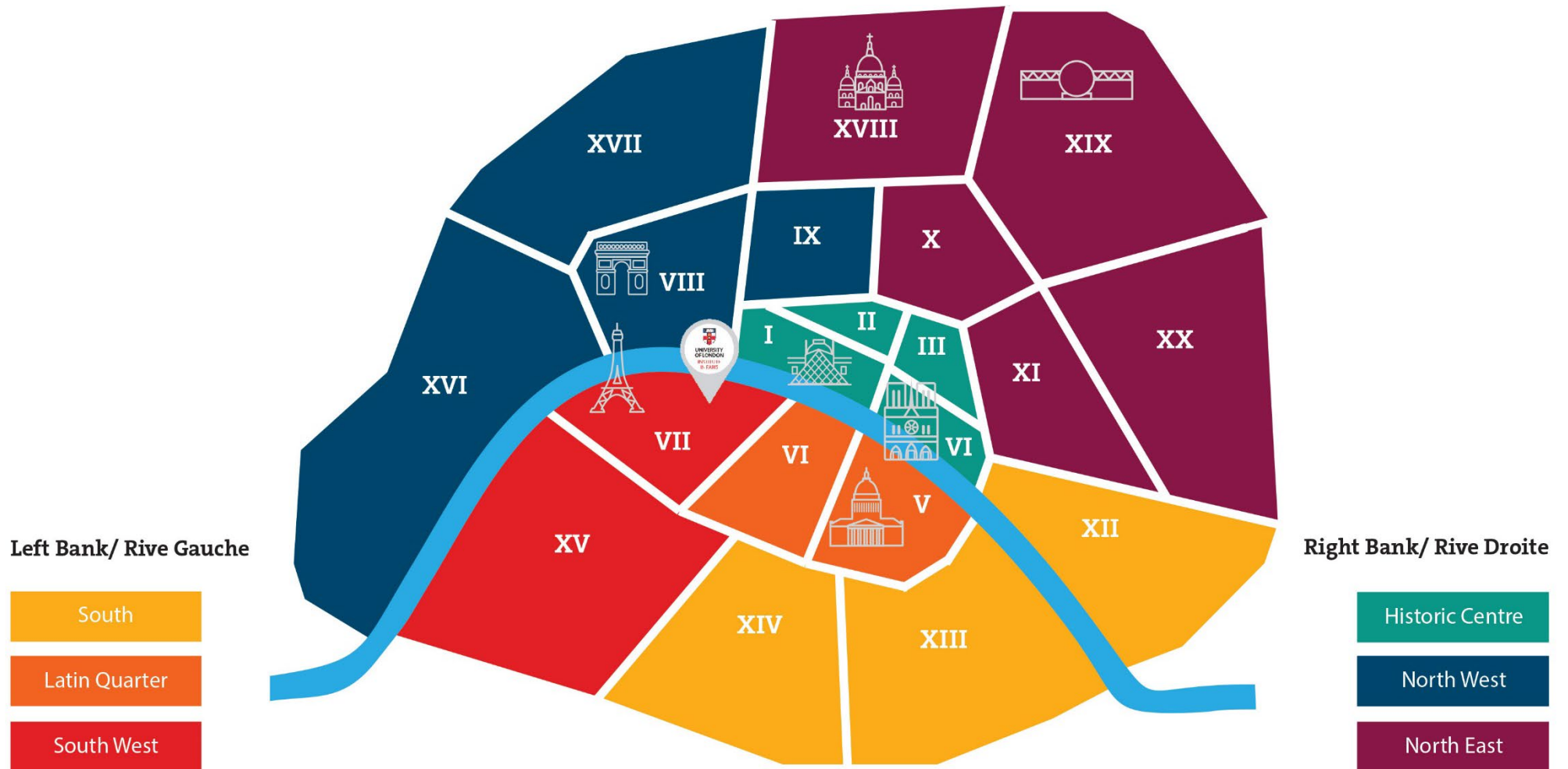
- Start planning early.
- Apply as soon as possible for halls, CIUP, or hostels.
- Plan to visit Paris to view flats.



- Contact current/prospective students on social media (e.g. Facebook group).
- Search online on housing websites and RATP to estimate travel time.
- Use notice board at ULIP and American Church.
- Stay in touch with Student Services team!



Where to live?



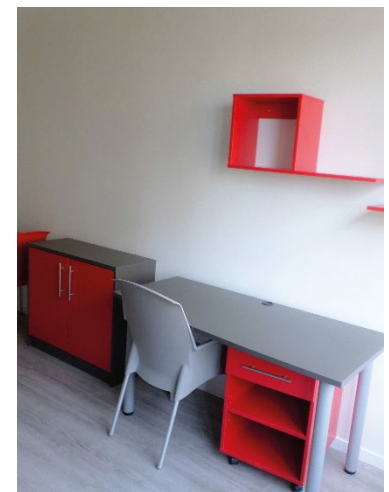
Accommodation Options

Hall of Residence	Independent Housing	Flat Sharing	Living + Working Arrangements	Other
<ul style="list-style-type: none"> • Compromise between independence and structured environment • Prices increase as you get nearer central Paris • Apply early • Resources: <ul style="list-style-type: none"> ○ nexity-studea.com ○ estudines.com ○ campus.youfirst.co/fr ○ Adele.org • Price range: from €600-€1100/month 	<ul style="list-style-type: none"> • Central locations • Good if you like being independent but can get lonely • Studio = self-contained with bathroom and kitchenette • Chambres de bonne = small independent rooms on the top floor, many have shared toilets and/or shower • Resources: ULIP Facebook group, agencies, noticeboards • Price range: from €500 - €1000/month 	<ul style="list-style-type: none"> • Popular option among ULIPers • Generally cheaper than a private studio • Need to choose flatmates who share your lifestyle • Resources: <ul style="list-style-type: none"> ○ ULIP Facebook group ○ appartager.com ○ lacartedescolocs.fr ○ room4talk.com • Price range: from €600 - €900/month per person 	<ul style="list-style-type: none"> • Opportunity to work in exchange for reduced rent • Great way to improve spoken French • Flats in good state of repair • Resources: <ul style="list-style-type: none"> ○ ULIP Facebook group ○ Noticeboards • Price range: from free - €500/month 	<p>Cité Internationale Universitaire</p> <ul style="list-style-type: none"> • Mostly PG students • Apply early • Price range: start at €500/month <p>Private Hostel</p> <ul style="list-style-type: none"> • Usually for women only • Strict house rules • Apply early, central location • Price range: from €500/month



Student Halls of Residence

PROS	CONS
Advance booking	Cost
Bills included and well-equipped	Location



ULIP partnerships

- ULIP has a special arrangement with two private student halls:
 - Nexity Studea (since September 2018)
 - Estudines (since September 2022)
- Priority given to first year undergraduate students
- Currently **50** studio flats
- **Flats are fully-furnished** with a private bathroom and kitchen corner
- **Includes** all utilities and insurance
- **9-month** contracts directly with University of London



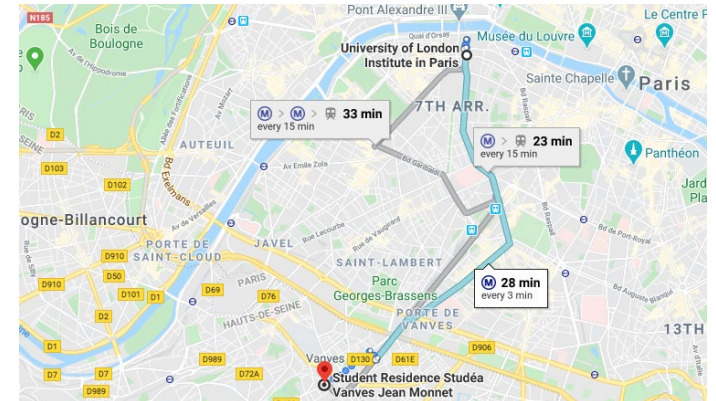
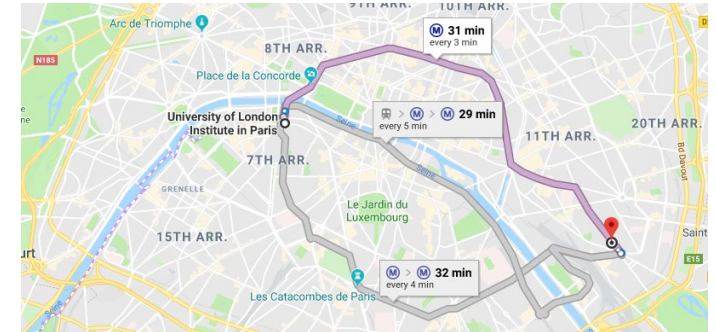
Arrangement with Nexity Studéa

You can choose between **two locations**:

- Vivaldi (Paris 12th arrondissement)
- Vanves (Paris outskirts)

They are located about 30 to 35 minutes from ULIP from the university on the metro or RER C from either location

- Vivaldi Paris location – two different studio sizes:
 - 16sqm at £795
 - 22sqm at £905
- Vanves location: £805 for approx 18sqm



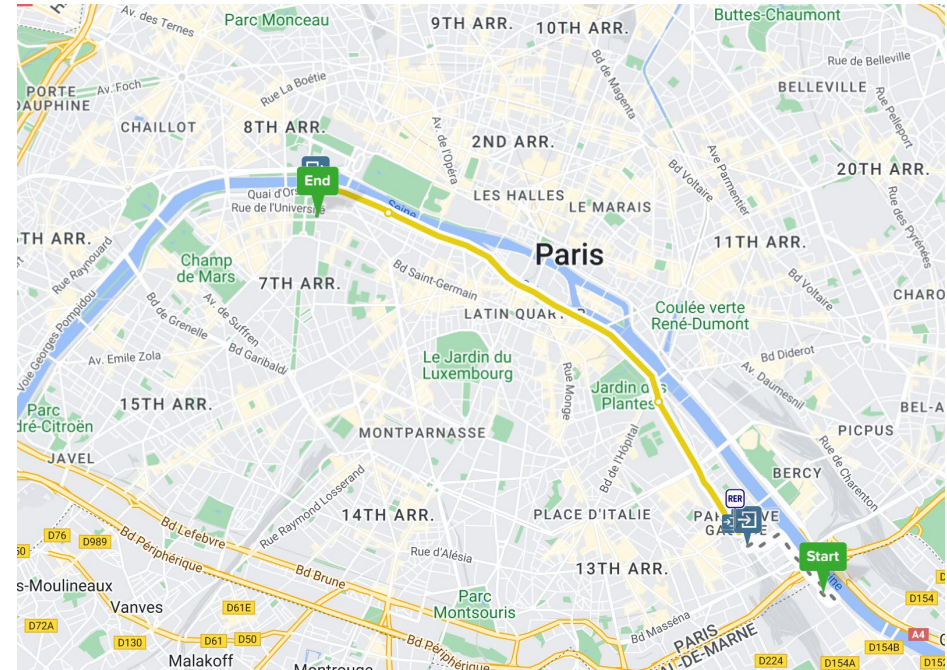
Arrangement with Estudines

One location:

- Ivry (outskirts of Paris)

Located about 35 minutes from
ULIP

- Ivry: 19sqm at £785



Independent Housing

PROS	CONS
Wide price range	Small
Independence	Lonely
Location	



Flat Sharing

PROS	CONS
Price	« Landlord problems »
Flat mates	Flat mates



Living + Working Arrangements

PROS	CONS
Price	Working Hours
French environment	House rules



IMPORTANT

- **DO** visit flats before committing yourself, or ask current student for advice (e.g. central paris rentals)
- **DO** make sure you understand the contract
- **DO** ask Student Services for advice
- **DON'T** make a payment to book a viewing/buy housing lists

Monthly Budget

MONTHLY BUDGET

Housing	€800
Bills	€70
Food and drink	€250
Public transport	€39
Entertainment & leisure	€150
TOTAL	€1309



Financial Support

SOURCE	AMOUNT IN STERLING
Maintenance Loan	Up to £11,427 per year
Bursaries and Scholarships	Up to £1,700 per year
Housing Benefit Allowance (CAF)	Approximately €220 per month for a studio, approximately €120 for a flatshare or homestay

Further information can be found at:
<https://www.gov.uk/student-finance>

Financial Support

Further information can be found at:

<https://www.gov.uk/student-finance>

Visa - application process

1

Register on the EEF (Etudes en France) platform

2

Apply for your visa on [France-visas.gouv.fr](https://france-visas.gouv.fr) and book your appointment at TLS Centre

3

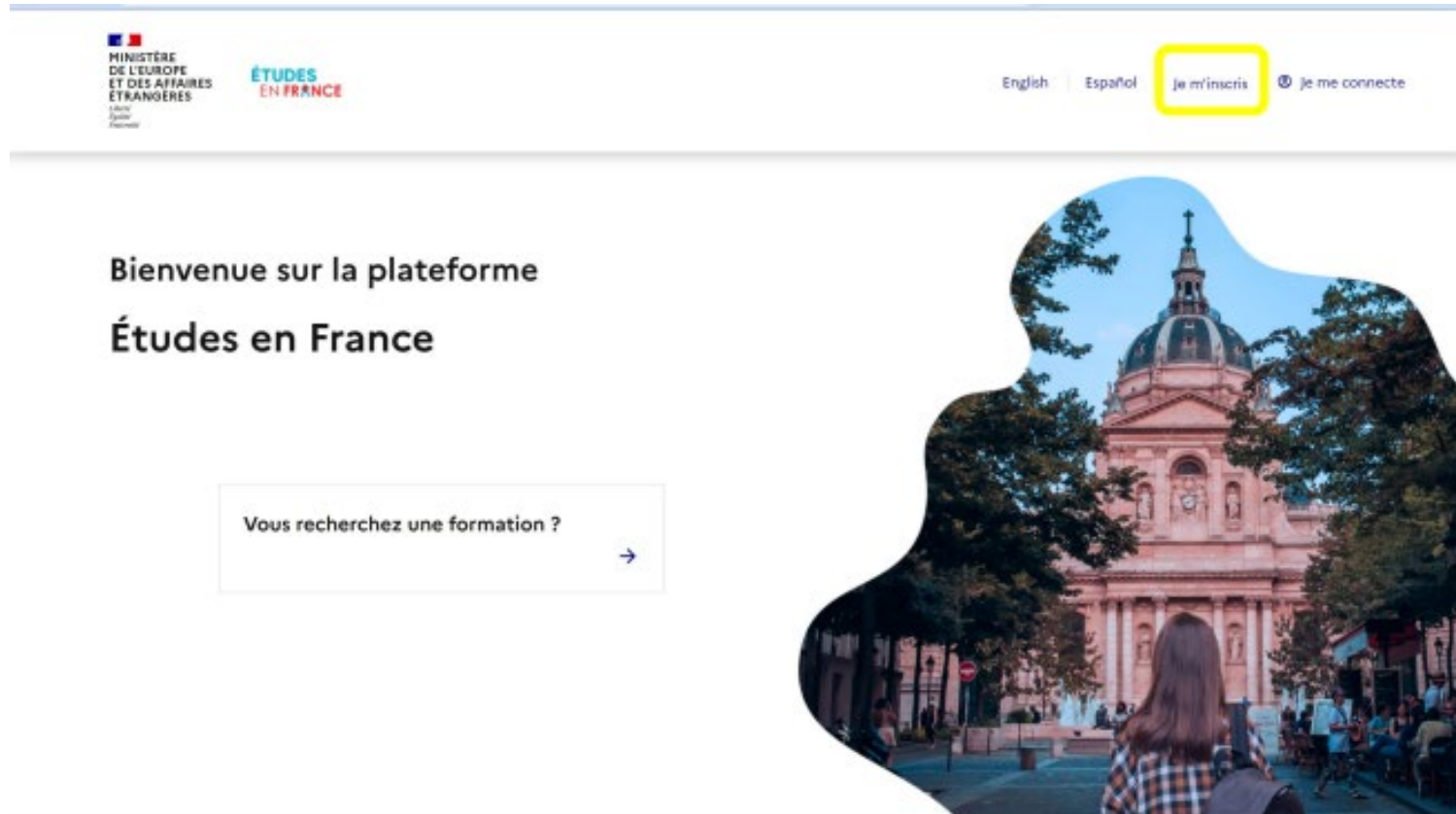
Drop off your passport and documents at TLS Contact Centre

4

Pick up your visa from TLS Contact or select the return by courier option



Etudes en France (EEF)



EEF platform – supporting docs

Valid passport

- Valid passport, with an expiry date at least 3 months after the end of the visa duration

Proof of enrolment from current institution

- Signed statement from your current school or college (or latest school if on gap year)

Letter of acceptance from ULIP

- ULIP will provide a bespoke document, do not use UCAS offer or email confirmation

Personal statement

- Short personal statement indicating your reasons for choosing to study in France



1. Do you need a visa ?

- > Test in 3 minutes
- > List of supporting documents
- > Applicable fees



2. Start your visa application

- > Create an account
- > Fill out the application form



3. Submit your application

- > Book an appointment
- > Practical information
- > Local features



4. Track your application

- > Check your application status
- > Collect your passport
- > Prepare for your stay in France



france-visas – supporting docs

Valid passport

- Valid passport, with an expiry date at least 3 months after the end of the visa duration

EEF confirmation

- You will receive this once your EEF registration is complete, usually within one week of submission

Proof of housing

- Proof of housing (at least 3 weeks), or letter from ULIP confirming Nexity housing option

Proof of sufficient funds

- Proof of sufficient funds (at least 615€ per month) e.g. bank statement or student loan eligibility



TLS contact

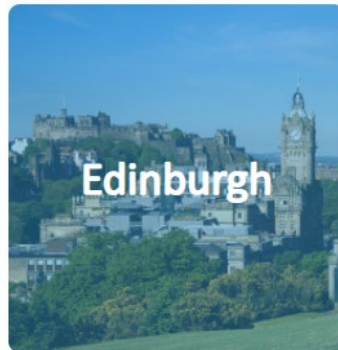
TLScontact
A Teleperformance Company

English ▼

Welcome to the French Visa Application Centre in the United Kingdom

Your partner in the United Kingdom for all your visa applications for France 

Select your centre



**UNIVERSITY
OF LONDON** | **INSTITUTE
IN PARIS**

london.ac.uk/institute-in-paris

Visa - cost and timeline

Cost

- EEF registration: £90
- Visa fee - 50€ (to be paid in GBP at corresponding exchange rate)
- TLS Service fee - £30
- Optional service: Return by courier (£18)

Timeline

- EEF registration: once you have a firm offer – we will send acceptance letters in May
- France-visas.gouv.fr: 3 months before intended travel at the earliest
- Appointment 20 days before departure

Visa – what next

Within 3 months of arriving in France

Within three months of arriving in France, you must validate your long-term student visa (VLS-TS) via an online process which will confirm your right to stay in France for the first academic year

2 months before VLS-TS expiry

At least two months before your VLS-TS expires, you should apply for the renewal of your residency permit which will last until the end of your programme of study

Healthcare

UK students can apply for a Global Health Insurance Card (GHIC) providing same cover as former EHIC card.

However

We recommend students register with French social security via the Ameli étudiant étranger platform. This will facilitate reimbursements of medical costs and give you a social security number which employers will ask for.

Students will be guided through the process during induction week.

Questions?



Student Services

Claire Miller-Bersoullé

Eleanor Clarke

Catherine Duperray

Tel: +33 1 44 11 73 76/83/94

contact@ulip.lon.ac.uk

Students' Union

su.president@ulip.lon.ac.uk

ULIP Facebook group





**UNIVERSITY
OF LONDON**
**INSTITUTE
IN PARIS**

**Make Paris
your
campus**

london.ac.uk/institute-in-paris