



AccessAble
Your Accessibility Guide

The new name for DisabledGo

College Hall

The University of London, Malet Street, London, WC1E 7HZ

020 7862 8881 (tel:020 7862 8881)

Send email (mailto:info.halls@london.ac.uk)

Visit website (<https://halls.london.ac.uk/>)



Access Guide

Introduction

- Services / facilities within the building include standard and accessible catered accommodation.

Getting Here

By Road

View

- Exit the M1 at junction 1 onto the North Circular road, follow until the Brent Cross interchange and turn right here onto the A41. Follow the A41 road to the end and then turn right onto the Finchley Road. Following the A41 still, the road will become the B525, continue to the end of the road and turn left onto the Outer Circle, then turn left onto Gloucester Gate and then right onto

Albany Street. Follow this road till you reach the A501. Take the first exit onto the A400. Follow this road to find the building.

- There is on street parking available around the area, most of which is pay and display or for residents only. There is building parking for Senate House.

By Bus

[View](#)

- The nearest bus stop is Torrington Place which serves routes 14, 24, 29, 73, 134, 390, N5, N20, N29, N73, N253 and N279.

By Train

[View](#)

- The nearest train station is Euston. This is approximately a 10 minute walk away.

By Underground

[View](#)

- The nearest underground station is Goodge Street which is on the Northern Line. This is approximately a 5 minute walk away. Russell Square Underground Station is approximately 9 minutes away and is located on the Piccadilly Line.

Useful Information

- **To see more information on Student Advice Centre please click here (opens new tab)** (<https://london.ac.uk/ways-study/study-campus-london/student-services-and-support>).
- Telephone Number: +44 (0)20 7862 8360.
- Offices for the Student Advice Centre are located in Senate House and Stewart House.
- **To see more information on Housing Services please click here (opens new tab)** (<https://housing.london.ac.uk/>).
- Telephone Number: +44 (0)20 7862 8880.
- Email: housing@london.ac.uk.

Building Parking

Photos



1



2

-
- The building does not have its own dedicated parking.
 - Clearly signed and/or standard marked parking bays are available.
 - The on street standard parking bay(s) is/are located on Malet Street.

Drop Off Point

[View](#)

- There is not a designated drop off point.

Comments

[View](#)

- The parking is for resident permit holders only from 08.30 - 18.30 from Monday to Saturday.

Outside Access (Main Entrance)

Photos



1



2



3

Entrance

[View](#)

- This information is for the entrance located at the front of the halls off Malet Street and opposite Student Central.

- There is step free access at this entrance, via lift.
- There is not a bell/buzzer.
- There is an intercom.
- The height of the intercom is 110cm (3ft 7in).
- A key card is required for access at this entrance.
- The height of the card reader/lock is 97cm (3ft 2in).
- There is a canopy or recess which provides weather protection at this entrance.
- The main door(s) open(s) automatically (towards you).
- The door(s) is/are push pad activated.
- The door(s) is / are double.
- The width of the door opening is 132cm (4ft 4in).

Step(s)

[View](#)

- There is a / are step(s) at this entrance.
- The step(s) is / are located immediately beyond the entrance.
- There is / are 6 step(s) to access the entrance.
- The step(s) is / are clearly marked.
- The step(s) is / are deep (18cm+).
- The steps do have handrails.
- The handrails are on both sides.

Lift

[View](#)

- There is a lift to access this entrance.
- The lift does bypass the step(s).

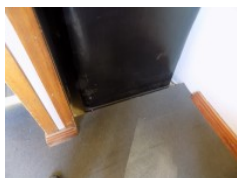
Lift (Main Entrance)



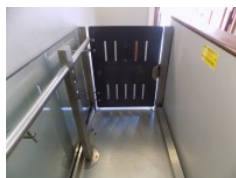
Photos



1



2



3



4

- There is a lift for public use.
- The lift is located to your right on entrance.
- The lift is a platform lift.
- The platform lift accesses a small level change.
- The weight limit for the lift is 500kg.
- The lift is approximately 3m (3yd 10in) from the main entrance.
- Staff do not need to be notified for use of the lift.
- The clear door width is 78cm (2ft 7in).
- The dimensions of the lift are 85cm x 168cm (2ft 9in x 5ft 6in).
- There are separate entry and exit doors in the lift.
- There is not a mirror to aid reversing out of the lift.
- The lift does not have a visual floor indicator.
- The lift does not have an audible announcer.
- The lift does not have a hearing loop system.
- The lift does have Braille markings.
- The lift does have tactile markings.
- The controls for the lift are within 90cm - 120cm from the floor.
- The lighting level in the lift is bright.

Comments

View

- The lift as viewed on entrance to the building can be seen in photograph 1.
- There is a small slight slope to access the lift on the lower level. This can be seen in photograph 2.
- The inside of the lift can be seen in photograph 3.

- The lift as viewed from the upper level can be seen in photograph 4.

Reception



Photos



1



2

-
- College Hall Reception is located in front of you on entrance.
 - The desk is 3m (3yd 10in) from the main entrance lift.
 - The reception area is clearly visible from the entrance.
 - There is step free access to this reception area, via lift.
 - The lighting levels in the reception area are bright.
 - The reception desk/counter is high (110cm+).
 - There is a low section of the counter (76cm or below) available.
 - There is a clear knee recess beneath the low/lowered counter.
 - The desk is staffed.
 - There is a hearing assistance system.
 - The type of system is a portable loop.
 - The hearing assistance system is signed.

Getting Around



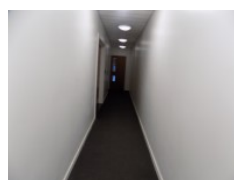
Photos



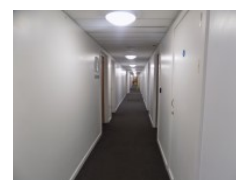
1



2



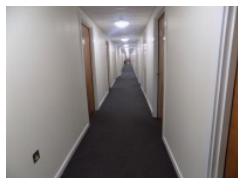
3



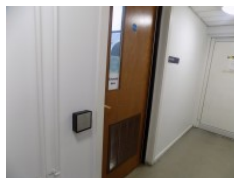
4



5



6



7



8

Access

View

- There is step free access throughout the building via lift(s).
- There is a slight ramp, with handrails on both sides, for access to 727 - 744.
- The width of the ramp is 130cm (4ft 3in).
- The slope can be seen in photograph 1.
- There are not doors in corridors which have to be opened manually.

Getting Around

View

- There is clear signage for building facilities/areas in the foyer/reception area.
- There is clearly written, tactile and braille directional signage at key points of circulation routes.
- There is some flooring in corridors which is shiny and could cause issues with glare or look slippery to some people.
- There is good colour contrast between the walls and floor in all areas.
- The lighting levels are good.
- This building does not play background music.

Comments

View

- There are several push pad to open automatic doors with a width of 83cm to exit the foyer and access corridors on the ground floor. An example can be seen in photograph 2.

- There are pantries located on all floors. The pantry on the lower ground floor is accessed by an automatic door with a width of 85cm. The pantry can be seen in photographs 7 and 8.

Lift (Central Lifts)



Photos



1



2

-
- There is a lift for public use.
 - The lift is located to your left on entrance.
 - The lift is a standard lift.
 - The floors which are accessible by this lift are B, G, 1, 2, 3, 4, 5, 6 and 7.
 - Wall mounted information boards are provided at lift landings.
 - The weight limit for the lift is 630kg.
 - The lift is approximately 6m (6yd 1ft) from the main entrance lift.
 - Staff do not need to be notified for use of the lift.
 - The clear door width is 80cm (2ft 7in).
 - The dimensions of the lift are 107cm x 140cm (3ft 6in x 4ft 7in).
 - There are not separate entry and exit doors in the lift.
 - There is a mirror to aid reversing out of the lift.
 - The lift does have a visual floor indicator.
 - The lift does have an audible announcer.
 - The lift does have a hearing loop system.
 - The lift does not have Braille markings.
 - The lift does have tactile markings.

- The controls for the lift are within 90cm - 120cm from the floor.
- The lighting level in the lift is bright.

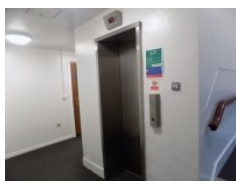
Comments

[View](#)

- To access the lift a key card is needed. The height of the card reader is 100cm.

Lift (Right of the Building)

Photos



1



2

-
- There is a lift for public use.
 - The lift is located to the right of the building.
 - The lift is a standard lift.
 - The floors which are accessible by this lift are B, G, 1, 2, 3, 4, 5, 6 and 7.
 - Wall mounted information boards are provided at lift landings.
 - There are manual, heavy, double doors to access the lift lobby on the ground floor.
 - The weight limit for the lift is 320kg.
 - Staff do not need to be notified for use of the lift.
 - The clear door width is 70cm (2ft 4in).
 - The dimensions of the lift are 95cm x 85cm (3ft 1in x 2ft 9in).
 - There are not separate entry and exit doors in the lift.
 - There is a mirror to aid reversing out of the lift.
 - The lift does have a visual floor indicator.

- The lift does have an audible announcer.
- The lift does not have a hearing loop system.
- The lift does not have Braille markings.
- The lift does have tactile markings.
- The controls for the lift are within 90cm - 120cm from the floor.
- The lighting level in the lift is bright.

Common Room



Photos



1



2



3



4

-
- The room is accessed by a 80cm automatic door that opens away from you and is opened via a push pad.
 - The surface of the floor is shiny and may appear slippery.
 - There are small coffee tables and sofas with armrests on either side.

Laundry



Photos



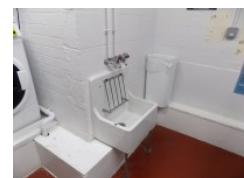
1



2



3



4

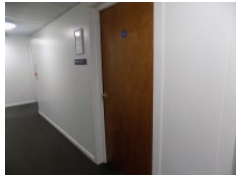
-
- The door to access the Laundry opens away from you is automatic and activated by a push pad and has a width of 83cm.
 - The controls for the washing machine card payment reader is 115cm
 - The controls for the lowest dryer is at a height of 125cm.

- There is a sink with taps at a height of 130cm in the laundry.

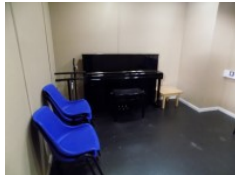
Music Room



Photos



1



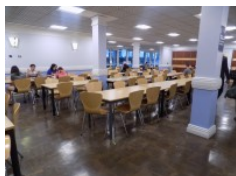
2

-
- Signage for the music room is clearly written, tactile and braille.
 - The room is accessible between 08:00 - 23:00
 - A key which can be request from the reception it is heavy opens away from you and has a width of 82cm.

Eating and Drinking (Dining Room)



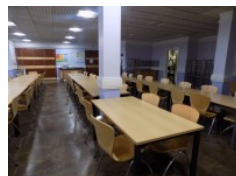
Photos



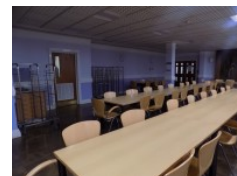
1



2



3



4



5



6

-
- The following information is for the refectory.
 - Full table service is not available.
 - Food or drinks are ordered from the service counter.
 - Food or drinks can be brought to the table.

- No tables are permanently fixed.
- No chairs are permanently fixed.
- Some chairs have armrests.
- The nearest table is 12m (13yd 4in) from the main lift.
- The standard height for tables is 70cm.
- There is ample room for a wheelchair user to manoeuvre.
- Plastic / takeaway cutlery is available.
- Menus are wall only.
- Menus are not available in Braille.
- Menus are not available in large print.
- Picture menus are not available.
- Menus are clearly written.
- Menus are presented in contrasting colours.
- The type of food served here is breakfast, dinner and brunch on weekends.

Comments

[View](#)

- The dining room is accessed by a manual double doors with a width of 160cm or a single push pad automatic door that opens away from you with a width of 80cm.
- There are vending machines in the dining hall.
- The snacks vending machines has a 103cm coins slot and controls at a height of 130 cm.
- There is a drinks vending machine with a coins slot at a height of 123cm and controls between a height of 72cm and 112cm.

Opening Times

[View](#)

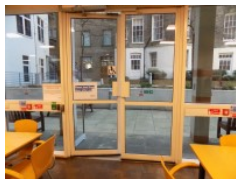
- Monday 08:00 - 09:30.
- Monday 18:00 - 19:30.
- Tuesday 08:00 - 09:30.
- Tuesday 18:00 - 19:30.

- Wednesday 08:00 - 09:30.
- Wednesday 18:00 - 19:30.
- Thursday 18:00 - 19:30.
- Friday 18:00 - 19:30.
- Saturday 11:00 - 12:30.
- Saturday 18:00 - 19:30.
- Sunday 11:00 - 12:30.
- Sunday 18:00 - 19:30.

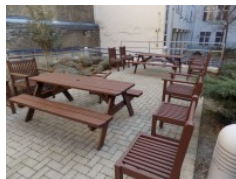
Garden Area



Photos



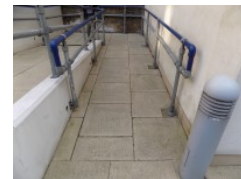
1



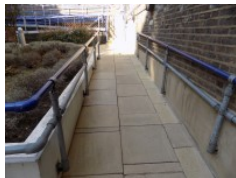
2



3



4



5



6



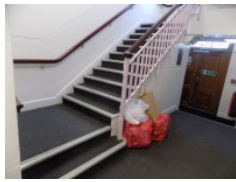
7

- To access the garden there are push pad doors that open away from you with a width of 86cm that are located in the Dining Hall.
- There are tables in the Garden Area with a height of 65cm.
- There are some chairs with armrests on each side available.
- There is an upper seating area that has ramped or stepped access.
- There is a slight ramp with handrails on both sides with it's width varying from between 114cm and 140cm.
- This ramp bypasses 10 deep steps to reach the upper seating area.

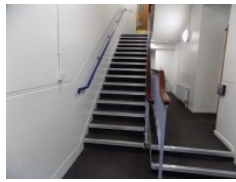
Other Floors



Photos



1



2

Steps

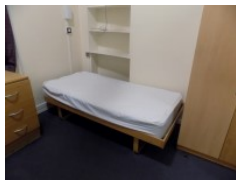
View

- The floors which are accessible by stairs are B, G, 1, 2, 3, 4, 5, 6 and 7.
- The stairs are located to the right of the building.
- The stairs are approximately 25m from the main entrance lift.
- There are 15+ steps between floors.
- There are manual, heavy, double doors to access the stairwell on all floors.
- The lighting levels are bright.
- The steps are clearly marked.
- The steps are deep (18cm+).
- The steps do have handrails.
- The steps have a handrail on both sides.
- There is a landing.
- There is a similar set of stairs to the left of the building, that also go to the basement and can be seen in photograph 2. There are additional sets of stairs to the rear of the building.

Accommodation (G.04)



Photos



1



2



3



4



5



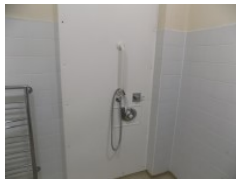
6



7



8



9



10

Location of Accessible Accommodation

View

- The establishment provides 15 accessible accommodation facilities with an ensuite and/or separate accessible bathroom.
- This information refers to G.04.
- There is level access from an accessible entrance.
- The room number viewed was G.04.
- The width of the door to the room is 83cm (2ft 9in).
- The dimensions of the clear floor space are 160cm x 250cm (5ft 3in x 8ft 2in).
- The bed is 52cm (1ft 8in) high.
- The measurement between the bed base and floor is 28cm (11in).
- Light switches are not within 120cm (4ft) from floor level.
- There is not a functional emergency alarm in the room.
- No emergency alarm is fitted in the room.
- Other accessible facilities available in the bedroom are There is an Intercom in the room which can be used to call reception. There is also a fixed shower head in the bathroom at a height of 210cm.

- Assistance dogs are welcome to stay with residents in accessible accommodation.

Accessible Bathroom

View

- The information relates to the ensuite.
- The dimensions of the bathroom are 238cm x 262cm (7ft 10in x 8ft 7in).
- The door opens outwards.
- The width of the door to the bathroom is 86cm (2ft 10in).
- The door weight is light.
- There is not a functional emergency alarm in the bathroom.
- It is out of reach (higher than 10cm (4") from floor).
- The door is locked by a The door is locked by a twist lock.
- The height of the toilet seat above floor level is 47cm (1ft 7in).
- There is not a toilet roll holder.
- There is a wash basin.
- The wash basin cannot be reached from seated on the toilet.
- The height of the wash basin is 71cm (2ft 4in).
- There is a mixer tap.
- The tap type is lever.
- There is a lateral transfer space.
- The measurement of lateral transfer space is 150cm (4ft 11in).
- As you face the toilet pan the transfer space is on the left.
- There is not a dropdown rail on the transfer side.
- There is a flush on the transfer side.
- Wall mounted grab rails are available for the toilet.
- As you face the toilet pan the wall mounted grab rails are on the right.
- There are mirrors.
- The mirrors are not placed at a lower level or at an angle for ease of use.

- Disposal facilities are available.

Wheel In Shower

[View](#)

- There is a wheel in shower.
- The shower head height is adjustable.
- The type of shower controls used are twist/turn.
- There is no shower seat .
- There are no handrails available for the shower.

Colour contrast and lighting in accessible rooms

[View](#)

- The colour contrast between the external room door and wall is good.
- The colour contrast between the walls and floor is good.
- The colour contrast between the internal room door and wall is good.
- The colour contrast between external ensuite / bathroom door and wall is good.
- The lighting levels are bright.

Colour contrast and lighting in accessible bathroom

[View](#)

- The colour contrast between the internal bathroom door and wall is good.
- The colour contrast between the walls and floor in the bathroom is good.
- The colour contrast between the drop down rails and wall is poor.
- The colour contrast between the grab rails and wall is poor.
- Lighting levels are bright.

Auxiliary Aids - General

[View](#)

- Some of the rooms have auxiliary aids for people with sensory impairments.
- Available auxiliary aids include flashing alarms and vibrating pillows.
- Flashing fire alarms are available on request.
- Vibrating fire alarms are available on request.
- The accommodation does provide other auxiliary aids for people with mobility impairments.
- Available mobility auxiliary aids include ceiling tracking hoists are available.
- Assistance dogs are welcome to stay with residents in standard rooms.

Ground Floor Rooms

[View](#)

- Ground floor rooms do have level access.
- None of these rooms are accessed by platform lift.
- Adjoining rooms are not available.

Standard Rooms on Other Floors

[View](#)

- There are standard rooms on other floors.
- The other floors can be accessed by lift.
- There is level access to standard rooms on other floors.
- Adjoining rooms are not available.

Comments

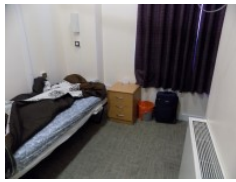
[View](#)

- There is a slight slope to access the shower.
- There are coat hooks in the bathroom at a height of 180cm.
- The hoist covers the bedroom area only.

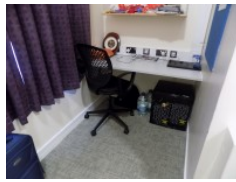
Accommodation (G.13)



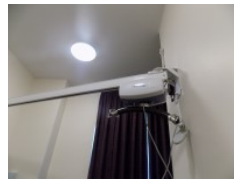
Photos



1



2



3



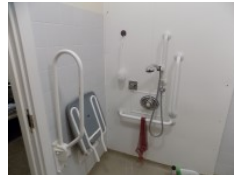
4



5



6



7

Location of Accessible Accommodation

View

- The establishment provides 16 accessible accommodation facilities with an ensuite and/or separate accessible bathroom.
- This information refers to G.13.
- The accessible facilities are located along the corridor to the left of the building.
- There is level access from an accessible entrance.
- The room number viewed was G.13.
- The width of the door to the room is 83cm (2ft 9in).
- The dimensions of the clear floor space are 120cm x 385cm (3ft 11in x 12ft 8in).
- The bed is 50cm (1ft 8in) high.
- The measurement between the bed base and floor is 30cm (12in).
- Light switches are within 120cm (4ft) from floor level.
- There is not a functional emergency alarm in the room.
- No emergency alarm is fitted in the room.
- Other accessible facilities available in the bedroom are There is an intercom to communicate with the reception.

- Assistance dogs are welcome to stay with residents in accessible accommodation.

Accessible Bathroom

[View](#)

- The information relates to the ensuite.
- The dimensions of the bathroom are 238cm x 262cm (7ft 10in x 8ft 7in).
- The door opens inwards.
- The width of the door to the bathroom is 86cm (2ft 10in).
- The door weight is light.
- There is not a functional emergency alarm in the bathroom.
- It is out of reach (higher than 10cm (4") from floor).
- The door is locked by a The door is locked by a twist lock.
- The height of the toilet seat above floor level is 48cm (1ft 7in).
- There is a toilet roll holder.
- The toilet roll holder can be reached from seated on the toilet.
- The toilet roll holder is not placed higher than 100cm in height.
- There is a wash basin.
- The wash basin can be reached from seated on the toilet.
- The height of the wash basin is 74cm (2ft 5in).
- There is a mixer tap.
- The tap type is lever.
- There is a lateral transfer space.
- The measurement of lateral transfer space is 145cm (4ft 9in).
- As you face the toilet pan the transfer space is on the right.
- There is a dropdown rail on the transfer side.
- There is a flush on the transfer side.
- Wall mounted grab rails are available for the toilet.
- As you face the toilet pan the wall mounted grab rails are on both sides.
- There are mirrors.

- The mirrors are not placed at a lower level or at an angle for ease of use.
- Disposal facilities are available.

Wheel In Shower

[View](#)

- There is a wheel in shower.
- The shower head height is adjustable.
- The type of shower controls used are twist/turn.
- The shower seat is flip-down.
- The shower seat height is 48cm (1ft 7in).
- There are handrails available for the shower.

Colour contrast and lighting in accessible rooms

[View](#)

- The colour contrast between the external room door and wall is good.
- The colour contrast between the walls and floor is good.
- The colour contrast between the internal room door and wall is good.
- The colour contrast between external ensuite / bathroom door and wall is good.
- The lighting levels are bright.

Colour contrast and lighting in accessible bathroom

[View](#)

- The colour contrast between the internal bathroom door and wall is good.
- The colour contrast between the walls and floor in the bathroom is good.
- The colour contrast between the drop down rails and wall is poor.
- The colour contrast between the grab rails and wall is poor.
- Lighting levels are bright.

Ground Floor Rooms

[View](#)

- Ground floor rooms do have level access.
- Adjoining rooms are not available.

Standard Rooms on Other Floors

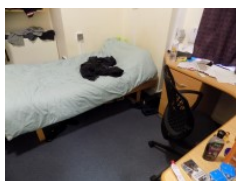
[View](#)

- There are standard rooms on other floors.
- The other floors can be accessed by lift.
- There is level access to standard rooms on other floors.
- Adjoining rooms are not available.

Accommodation (G.14)



Photos



1



2



3

Location of Accessible Accommodation

[View](#)

- The establishment provides 16 accessible accommodation facilities with an ensuite and/or separate accessible bathroom.
- This information refers to G.14.
- The accessible facilities are located along the corridor to the left of the building.
- There is level access from an accessible entrance.
- The room number viewed was G.14.
- The width of the door to the room is 86cm (2ft 10in).
- The dimensions of the clear floor space are 120cm x 250cm (3ft 11in x 8ft 2in).

- The bed is 50cm (1ft 8in) high.
- The measurement between the bed base and floor is 30cm (12in).
- Light switches are within 120cm (4ft) from floor level.
- There is not a functional emergency alarm in the room.
- Assistance dogs are welcome to stay with residents in accessible accommodation.

Accessible Bathroom

View

- The information relates to the ensuite.
- The dimensions of the bathroom are 240cm x 248cm (7ft 10in x 8ft 2in).
- The door opens outwards.
- The width of the door to the bathroom is 86cm (2ft 10in).
- The door weight is heavy.
- There is not a functional emergency alarm in the bathroom.
- No emergency alarm is fitted in the bathroom.
- The door is locked by a The door is locked by a twist lock.
- The height of the toilet seat above floor level is 47cm (1ft 7in).
- There is not a toilet roll holder.
- There is a wash basin.
- The wash basin can be reached from seated on the toilet.
- The height of the wash basin is 78cm (2ft 7in).
- There is a mixer tap.
- The tap type is lever.
- There is a lateral transfer space.
- The measurement of lateral transfer space is 150cm (4ft 11in).
- As you face the toilet pan the transfer space is on the right.
- There is not a dropdown rail on the transfer side.
- There is a flush on the transfer side.
- Wall mounted grab rails are available for the toilet.

- As you face the toilet pan the wall mounted grab rails are on the left.
- There are mirrors.
- The mirrors are not placed at a lower level or at an angle for ease of use.
- Disposal facilities are available.

Wheel In Shower

[View](#)

- There is a wheel in shower.
- The shower head height is adjustable.
- The type of shower controls used are twist/turn.
- There is no shower seat .
- There are handrails available for the shower.

Colour contrast and lighting in accessible rooms

[View](#)

- The colour contrast between the external room door and wall is good.
- The colour contrast between the walls and floor is good.
- The colour contrast between the internal room door and wall is good.
- The colour contrast between external ensuite / bathroom door and wall is good.
- The lighting levels are bright.

Colour contrast and lighting in accessible bathroom

[View](#)

- The colour contrast between the internal bathroom door and wall is good.
- The colour contrast between the walls and floor in the bathroom is good.
- The colour contrast between the grab rails and wall is poor.
- Lighting levels are bright.

Accessible Toilet (Ground Floor)

Photos



1



2



3

-
- Accessible toilet facilities are available.

Location and Access

[View](#)

- The toilet is not for the sole use of disabled people.
- There is Braille, tactile and pictorial signage on or near the toilet door.
- This accessible toilet is approximately 15m (16yd 1ft) from the main entrance lift.
- This accessible toilet is located to your left on entrance.
- There is level access to this accessible toilet.

Features and Dimensions

[View](#)

- This is a shared toilet.
- A key is not required for the accessible toilet.
- The door opens outwards.
- The door is locked by a twist lock.
- The width of the accessible toilet door is 86cm (2ft 10in).
- The door is light.
- The dimensions of the accessible toilet are 180cm x 215cm (5ft 11in x 7ft 1in).
- There is a clear 150cm x 150cm manoeuvring space in the accessible toilet.

- There is a lateral transfer space.
- As you face the toilet pan the transfer space is on the left.
- The lateral transfer space is 92cm (3ft).
- There is a dropdown rail on the transfer side.
- There is a flush, however it is not on the transfer side.
- The tap type is lever.
- There is a mixer tap.
- There is an emergency pull cord alarm in the cubicle.
- The emergency pull cord alarm is not fully functional.
- The alarm was out of reach (higher than 10cm (4") from floor) when surveyed.
- Disposal facilities are available in the cubicle.
- There is a/are female sanitary, non-infectious waste and general domestic waste disposal units.
- There is not a/are not coat hook(s).

Position of Fixtures

View

- Wall mounted grab rails are available for the toilet.
- As you face the toilet the wall-mounted grab rails are on both sides.
- There is a shelf within the accessible toilet.
- The shelf is higher than 95cm (3ft 1in).
- There is a mirror.
- Mirrors are not placed at a lower level or at an angle for ease of use.
- The height of the toilet seat above floor level is 50cm (1ft 8in).
- There is a hand dryer.
- The hand dryer cannot be reached from seated on the toilet.
- The hand dryer is placed higher than 100cm (3ft 3in).
- The height of the hand dryer is 123cm (4ft).
- There is not a towel dispenser.

- There is a toilet roll holder.
- The toilet roll holder can be reached from seated on the toilet.
- The toilet roll holder is not placed higher than 100cm (3ft 3in).
- There is a wash basin.
- The wash basin cannot be reached from seated on the toilet.
- The wash basin is placed higher than 74cm (2ft 5in).
- The height of the wash basin is 77cm (2ft 6in).
- There is a soap dispenser.
- The soap dispenser can be reached from seated on the toilet.
- The height of the soap dispenser is 92cm.

Colour Contrast and Lighting

[View](#)

- The contrast between the internal door and wall is good.
- The contrast between the external door and wall is good.
- The contrast between the wall-mounted grab rail(s) and wall is fair.
- The contrast between the dropdown rail(s) and wall is fair.
- The toilet seat colour contrast is poor.
- The contrast between the walls and floor is good.
- The lighting levels are bright.

Comments

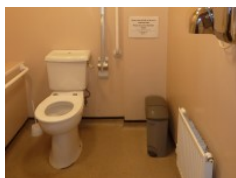
[View](#)

- There is a baby change at a height of 90cm.

Accessible Toilet (Lower Ground Floor)



Photos



1



2

- Accessible toilet facilities are available.

Location and Access

View

- The toilet is not for the sole use of disabled people.
- There is pictorial signage on or near the toilet door.
- This accessible toilet is approximately 10m (10yd 2ft) from the main lift.
- This accessible toilet is located to your right on exiting the lift.
- There is level access to this accessible toilet.
- This is by lift.

Features and Dimensions

View

- This is a shared toilet.
- A key is not required for the accessible toilet.
- The door opens outwards.
- The door is locked by a twist lock.
- The width of the accessible toilet door is 85cm (2ft 9in).
- The door is heavy.
- The dimensions of the accessible toilet are 168cm x 196cm (5ft 6in x 6ft 5in).
- There is not a clear 150cm x 150cm manoeuvring space in the accessible toilet.
- There is a lateral transfer space.
- As you face the toilet pan the transfer space is on the right.
- The lateral transfer space is 78cm (2ft 7in).
- There is a dropdown rail on the transfer side.

- There is a flush on the transfer side.
- The tap type is lever.
- There is a mixer tap.
- There is an emergency pull cord alarm in the cubicle.
- The emergency pull cord alarm is not fully functional.
- The alarm was out of reach (higher than 10cm (4") from floor) when surveyed.
- Disposal facilities are available in the cubicle.
- There is a/are female sanitary and open waste paper bin disposal units.
- There is not a/are not coat hook(s).

Position of Fixtures

View

- Wall mounted grab rails are available for the toilet.
- As you face the toilet the wall-mounted grab rails are on both sides.
- There is a shelf within the accessible toilet.
- The shelf is higher than 95cm (3ft 1in).
- There is a mirror.
- Mirrors are not placed at a lower level or at an angle for ease of use.
- The height of the toilet seat above floor level is 48cm (1ft 7in).
- There is a hand dryer.
- The hand dryer cannot be reached from seated on the toilet.
- The hand dryer is placed higher than 100cm (3ft 3in).
- The height of the hand dryer is 122cm (4ft).
- There is not a towel dispenser.
- There is a toilet roll holder.
- The toilet roll holder can be reached from seated on the toilet.
- The toilet roll holder is not placed higher than 100cm (3ft 3in).
- There is a wash basin.

- The wash basin can be reached from seated on the toilet.
- The wash basin is not placed higher than 74cm (2ft 5in).
- There is a soap dispenser.
- The soap dispenser can be reached from seated on the toilet.
- The height of the soap dispenser is 103cm.

Colour Contrast and Lighting

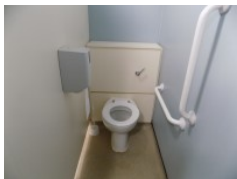
[View](#)

- The contrast between the internal door and wall is good.
- The contrast between the external door and wall is good.
- The contrast between the wall-mounted grab rail(s) and wall is fair.
- The contrast between the dropdown rail(s) and wall is good.
- The toilet seat colour contrast is poor.
- The contrast between the walls and floor is good.
- The lighting levels are bright.

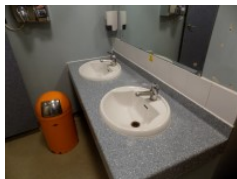
Standard Toilet(s)



Photos



1



2

Location of Standard Toilet(s)

[View](#)

- There are male and female standard toilets facilities on the lower ground floor.

Standard Toilet Surveyed

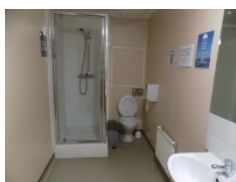
[View](#)

- A male standard toilet was surveyed.
- The toilet surveyed is located to your right on exiting the lift.
- There is a female standard toilet in the same location.
- The standard toilet surveyed is approximately 6m from the central lifts.
- There is a/are cubicle(s) suitable for ambulant disabled people in the standard toilet(s) surveyed.
- There are vertical and horizontal grab rails on the right hand side only.
- Lighting levels in the standard toilet surveyed are good.

Standard Shower



Photos



1



2

-
- Shower facilities are available.
 - The shower(s) surveyed is/are located to your right on exiting the main lift on the lower ground floor.
 - There is not level access to the services from the shower facilities.

Comments

[View](#)

- There is a deep step to access the shower.
- There is a standard shared toilet next to the shower.
- There are other shower facilities located throughout the accommodation areas of the building.

