



# AccessAble

Your Accessibility Guide

The new name for DisabledGo

## Connaught Hall

The University of London, 36-45 Tavistock Square, London, WC1H 9EX

020 7862 8881 (tel:020 7862 8881 )

Send email (mailto:info.halls@london.ac.uk)

Visit website (<https://halls.london.ac.uk/> )



## Access Guide

### Introduction

- Connaught Hall has four floors that are used for accommodation (G, 1, 2 and 3). This accommodation is catered and consequently, cooking facilities are not available for residents. There is a microwave and a refrigerator on each floor.

### Getting Here

#### By Road

[View](#)

- Exiting the M1 at junction 1 onto the North Circular Road, follow until the Brent Cross interchange and turn right here onto the A41. Follow the A41 road to the end and then turn right onto the Finchley Road. Following the A41 still, the road will become the

B525, continue to the end of the road and turn left onto the Outer Circle, then turn left onto Gloucester Gate and then right onto Albany Street. Follow this road till you reach the A501. Follow the road then turn right onto Gordons Street. Follow this street to the end then turn left, onto Gordons Square and then take the second left onto Tavistock Square. The building will be on the left.

- There is on street parking available around the area, most of which is pay and display or for residents only.

## By Bus

[View](#)

- The nearest bus stop is Tavistock Square (Stop K). The services that run to this stop are 59, 68, 91, 168 and N91.

## By Train

[View](#)

- The nearest train station is Euston. This is approximately a 10 minute walk away.

## By Underground

[View](#)

- The nearest underground station is Russell Square Station. This is approximately a 6 minute walk away.

# Useful Information

- **To see more information on Student Advice Centre please click here (opens new tab)** (<https://london.ac.uk/ways-study/study-campus-london/student-services-and-support>).
- Telephone Number: +44 (0)20 7862 8360.
- Offices for the Student Advice Centre are located in Senate House and Stewart House.
- **To see more information on Housing Services please click here (opens new tab)** (<https://housing.london.ac.uk/>).
- Telephone Number: +44 (0)20 7862 8880.
- Email: [housing@london.ac.uk](mailto:housing@london.ac.uk).

# Building Parking

## Photos



1

- 
- The building does not have its own dedicated parking.

## Public Car Parks

[View](#)

- There is not a car park for public use within 200m (approx).
- Clearly signed and/or standard marked parking bays are available.
- The on street standard parking bay(s) is/are located on Tavistock Square.

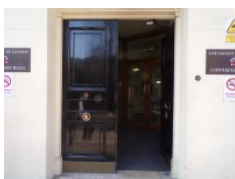
## Drop Off Point

[View](#)

- There is not a designated drop off point.

# Outside Access (Front Entrance)

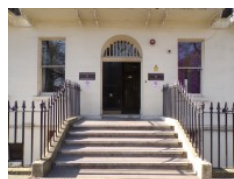
## Photos



1



2



3



4

---

## Entrance

[View](#)

- This information is for the entrance located at the front of the building.
- There is stepped access at this entrance.
- There is not a bell/buzzer.
- There is not an intercom.
- There is not a canopy or recess which provides weather protection at this entrance.
- The main door(s) open(s) away from you (push).
- The door(s) is / are double.
- The door(s) is / are permanently held open (at the time of the survey).
- The width of the door opening is 152cm (4ft 12in).
- There is a second set of doors.
- The door(s) open(s) towards you (pull).
- The door(s) is / are double.
- The door(s) is / are heavy.
- The width of the door opening is 146cm (4ft 9in).

## Step(s)

**View**

- There is a / are step(s) at this entrance.
- The step(s) is / are located in front of the entrance.
- There is / are 6 step(s) to access the entrance.
- There is not tactile paving at the top and bottom of the step(s).
- The step(s) is / are clearly marked.
- The step(s) is / are medium height (11cm - 17cm).
- The steps do not have handrails.

## Comments

**View**

- Access control is by pressing a buzzer, Security will then unlock the door remotely.

# Outside Access (Accessible Entrance)



## Photos



1



2



3



4



5



6



7



8

## Entrance

### View

- This information is for the entrance located at the far left of the building on Bedford Way.
- There is ramped/sloped or stepped access at this entrance.
- There is not a bell/buzzer.
- There is not an intercom.
- There is not a canopy or recess which provides weather protection at this entrance.
- The main door(s) open(s) towards you (pull).
- The door(s) is / are double.
- The door(s) is / are heavy.
- The width of the door opening is 70cm (2ft 4in).
- There is a second set of doors.
- The door(s) open(s) towards you (pull).
- The door(s) is / are double.
- The door(s) is / are heavy.
- The width of the door opening is 120cm (3ft 11in).

## Ramp/Slope

[View](#)

- There is a ramp/slope at this entrance.
- The ramp/slope is located in front of the entrance.
- The ramp/slope does bypass the step(s).
- The ramp/slope gradient is slight.
- The ramp is portable.
- There is not a level landing at the top of the ramp.
- Please contact a member of staff in advance, to put the ramp in position.
- The ramp does not have handrails.
- The width of the ramp is 72cm (2ft 4in).

## Step(s)

[View](#)

- There is a / are step(s) at this entrance.
- The step(s) is / are located in front of the entrance and in front of the second set of doors.
- There is / are 3 step(s) to access the entrance.
- The step(s) is / are clearly marked.
- The step(s) is / are medium height (11cm - 17cm).
- The steps do not have handrails.

## Comments

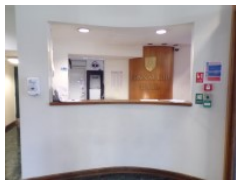
[View](#)

- Contact a member of staff to open the accessible doors and lay out the ramps.

## Reception



### Photos



1

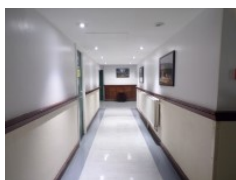


2

- Connaught Hall is located to the right as you enter.
- The desk is 30m (32yd 2ft) from the accessible entrance.
- The reception area is clearly visible from the entrance.
- There is step free access to this reception area.
- The lighting levels in the reception area are medium.
- The reception desk/counter is high (110cm+).
- There is not a low section of the counter (76cm or below) available.
- The desk is staffed.
- There is not a hearing assistance system.

## Getting Around

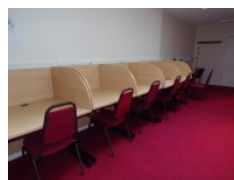
### Photos



1



2



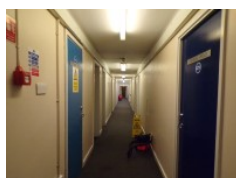
3



4



5



6

### Access

#### View

- There is step free access throughout the majority of the building, via lift.
- The fourth floor is not accessible by lift.

- There are doors in corridors which have to be opened manually.

## Getting Around

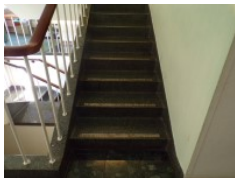
**View**

- There is clear signage for building facilities/areas in the foyer/reception area.
- There is clearly written directional signage at key points of circulation routes.
- There is good colour contrast between the walls and floor in all areas.
- The lighting levels are good.
- This building does not play background music.
- There is not a hearing assistance system.

## Other Floors



### Photos



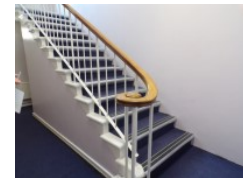
1



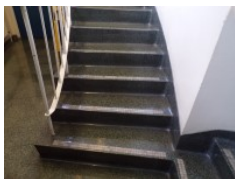
2



3



4



5



6

## Steps

**View**

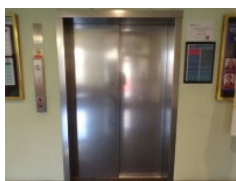
- The floors which are accessible by stairs are B, G, 1, 2 and 3.
- The stairs are located in the reception foyer.
- The stairs are approximately 37m from the accessible entrance.
- There are 15+ steps between floors.



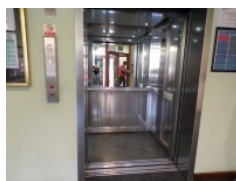
- The lighting levels are medium.
- The steps are clearly marked.
- The steps are medium height (11cm - 17cm).
- The steps do have handrails.
- The steps have a handrail on the left going up.
- There is a landing.
- There are similar sets of stairs towards the left and right sides of the buildings. The left stairs are shown in photographs 3 and 4. The right side stairs are shown in photographs 5 and 6.

## Lift

### Photos



1



2

- 
- There is a lift for public use.
  - The lift is located ahead of the main entrance.
  - The lift is a standard lift.
  - The floors which are accessible by this lift are B, G, 1, 2 and 3.
  - Wall mounted information boards are not provided at lift landings.
  - The weight limit for the lift is 750kg.
  - The lift is approximately 30m (32yd 2ft) from the accessible entrance.
  - Staff do not need to be notified for use of the lift.
  - The clear door width is 120cm (3ft 11in).
  - The dimensions of the lift are 170cm x 88cm (5ft 7in x 2ft 11in).
  - There are not separate entry and exit doors in the lift.
  - There is a mirror to aid reversing out of the lift.

- The lift does have a visual floor indicator.
- The lift does have an audible announcer.
- The lift does not have a hearing loop system.
- The lift does have Braille markings.
- The lift does have tactile markings.
- The controls for the lift are within 90cm - 120cm from the floor.
- The lighting level in the lift is medium.

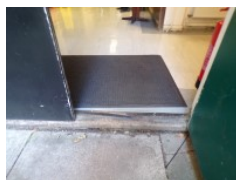
## Entrance (Garden Entrance)



### Photos



1



2

---

### Entrance

[View](#)

- This information is for the entrance located on the basement level, towards the right of the building.
- There is stepped access at this entrance.
- There is not a bell/buzzer.
- There is not an intercom.
- The main door(s) open(s) away from you (push).
- The door(s) is / are double (with one leaf locked).
- The door(s) is / are heavy.
- The width of the door opening is 80cm (2ft 7in).

### Step(s)

[View](#)

- There is a/are step(s) at this entrance.
- The step(s) is / are located immediately beyond the entrance.

- There is / are 1 step(s) to access the entrance.
- The step(s) is / are not clearly marked.
- The step(s) is / are medium height (11cm - 17cm).
- The steps do not have handrails.

## Student Garden

### Photos



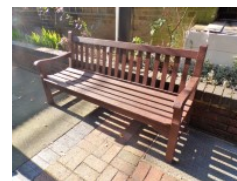
1



2



3



4

- 
- Within the garden there is benched seating which is 70cm high.
  - This area is accessed from the basement floor, by the Garden Entrance.

## Eating and Drinking (Dining Hall)

### Photos



1



2



3



4



5



6

- 
- The following information is for the refectory.
  - Full table service is not available.

- Food or drinks are ordered from the service counter.
- Food or drinks cannot be brought to the table.
- No tables are permanently fixed.
- No chairs are permanently fixed.
- No chairs have armrests.
- The nearest table is 20m (21yd 2ft) from the lift.
- The standard height for tables is 76cm.
- There is ample room for a wheelchair user to manoeuvre.
- Plastic / takeaway cups are available.
- Plastic / takeaway cutlery is not available.
- Drinking straws are not available.
- Menus are not available in Braille.
- Menus are not available in large print.
- Picture menus are not available.

## Comments

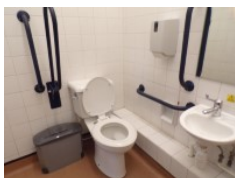
[View](#)

- There are two medium steps to the rear of the dining hall that accesses the stage area. This is shown in photograph 5 and 6.

## Accessible Toilet (Ground Floor)



### Photos



1



2

- 
- Accessible toilet facilities are available.

## Location and Access

[View](#)

- The toilet is not for the sole use of disabled people.
- There is pictorial signage on or near the toilet door.
- This accessible toilet is approximately 30m (32yd 2ft) from the accessible entrance.
- This accessible toilet is located in the reception foyer.
- There is level access to this accessible toilet.

## Features and Dimensions

**View**

- This is a shared toilet.
- A key is not required for the accessible toilet.
- The door opens outwards.
- The door is locked by a locking handle.
- The width of the accessible toilet door is 84cm (2ft 9in).
- The door is light.
- The dimensions of the accessible toilet are 147cm x 200cm (4ft 10in x 6ft 7in).
- There is not a clear 150cm x 150cm manoeuvring space in the accessible toilet.
- There is a lateral transfer space.
- As you face the toilet pan the transfer space is on the left.
- The lateral transfer space is 100cm (3ft 3in).
- There is a dropdown rail on the transfer side.
- There is a flush on the transfer side.
- The tap type is twist/turn.
- There is a mixer tap.
- There is an emergency pull cord alarm in the cubicle.
- The emergency pull cord alarm is not fully functional.
- The alarm was out of reach (higher than 10cm (4") from floor) when surveyed.
- Disposal facilities are available in the cubicle.

- There is a/are female sanitary and waste paper pedal bin disposal units.
- There is not a/are not coat hook(s).

## Position of Fixtures

View

- Wall mounted grab rails are available for the toilet.
- As you face the toilet the wall-mounted grab rails are on both sides.
- There is not a shelf within the accessible toilet.
- There is a mirror.
- Mirrors are not placed at a lower level or at an angle for ease of use.
- The height of the toilet seat above floor level is 47cm (1ft 7in).
- There is a hand dryer.
- The hand dryer cannot be reached from seated on the toilet.
- The hand dryer is placed higher than 100cm (3ft 3in).
- The height of the hand dryer is 105cm (3ft 5in).
- There is not a towel dispenser.
- There is a toilet roll holder.
- The toilet roll holder can be reached from seated on the toilet.
- The toilet roll holder is placed higher than 100cm (3ft 3in).
- The height of the toilet roll holder is 115cm (3ft 9in).
- There is a wash basin.
- The wash basin can be reached from seated on the toilet.
- The wash basin is not placed higher than 74cm (2ft 5in).
- There is a soap dispenser.
- The soap dispenser cannot be reached from seated on the toilet.
- The height of the soap dispenser is 100cm.

## Colour Contrast and Lighting

View

- The contrast between the internal door and wall is poor.
- The contrast between the external door and wall is poor.
- The contrast between the wall-mounted grab rail(s) and wall is poor.
- The contrast between the dropdown rail(s) and wall is good.
- The toilet seat colour contrast is poor.
- The contrast between the walls and floor is good.
- The lighting levels are medium.

## Standard Toilet(s)



### Photos



1



2



3

### Location of Standard Toilet(s)

**View**

- There are male and female standard toilets facilities on the ground floor, the first floor, the second floor and the third floor.

### Standard Toilet Surveyed

**View**

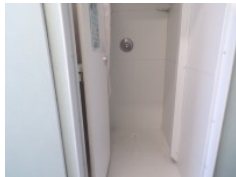
- A male standard toilet was surveyed.
- The toilet surveyed is located on the basement level.
- There is a female standard toilet in the same location.
- There is step free access to the standard toilet(s) surveyed from the entrance.
- The standard toilet surveyed is approximately 7m from the lift.
- There is a/are cubicle(s) suitable for ambulant disabled people in the standard toilet(s) surveyed.

- There are vertical and horizontal grab rails on the left hand side only.
- Lighting levels in the standard toilet surveyed are good.

## Standard Shower



### Photos



1



2

- 
- Shower facilities are available.
  - The shower(s) surveyed is/are located to the left of the building on the ground floor.
  - There is level access to the services from the shower facilities.

### Comments

**View**

- There is one deep step to gain access into the shower.
- There are showers on all floors that are shared between the accommodation residents.