



AccessAble

Your Accessibility Guide

The new name for DisabledGo

International Hall

The University of London, Lansdowne Terrace, London, WC1N 1AS

020 7862 8881 (tel:020 7862 8881)

Send email (<mailto:info.halls@london.ac.uk>)

Visit website (<https://halls.london.ac.uk/>)



Access Guide

Introduction

- All of the accommodation in this building is catered and self-catered for.

Getting Here

By Road

[View](#)

- Exiting the M1 at junction 1 onto the North Circular road, follow until the Brent Cross interchange and turn right here onto the A41. Follow the A41 road to the end and then turn right onto the Finchley Road. Following the A41 still, the road will become the B525, continue to the end of the road and turn left onto the Outer Circle, then turn left onto Gloucester Gate and then right onto

Albany Street. Follow this road until you reach the A501 and continue on the A501. Turn right onto the A4200 and continue approximately 600m down this street then turn left onto the B502. Follow this road to the building.

- There is on street parking available around the area, most of which is pay and display or for residents only.

By Bus

[View](#)

- The nearest bus stop is Russell Square (Stop J). The services that run to this stop are 59, 68, 91, 168, 188 and N91.

By Train

[View](#)

- The nearest train stations are Kings Cross St. Pancras and Euston. Kings Cross St. Pancras is approximately 1km from the building.

By Underground

[View](#)

- The nearest underground station is Russell Square, approximately 2 minutes away.

Useful Information

- **To see more information on Student Advice Centre please click here (opens new tab)** (<https://london.ac.uk/ways-study/study-campus-london/student-services-and-support>).
- Telephone Number: +44 (0)20 7862 8360.
- Offices for the Student Advice Centre are located in Senate House and Stewart House.
- **To see more information on Housing Services please click here (opens new tab)** (<https://housing.london.ac.uk/>).
- Telephone Number: +44 (0)20 7862 8880.
- Email: housing@london.ac.uk.

Building Parking

Photos



1

-
- The building does not have its own dedicated parking.

Public Car Parks

[View](#)

- There is not a car park for public use within 200m (approx).

On Street Parking

[View](#)

- Clearly signed and/or marked on street Blue Badge parking bays are available.
- Clearly signed and/or standard marked parking bays are available.
- The on street standard parking bay(s) is/are located on B502.

Drop Off Point

[View](#)

- There is not a designated drop off point.

Level Change (Access to Main Entrances)

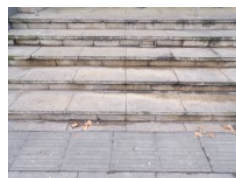
Photos



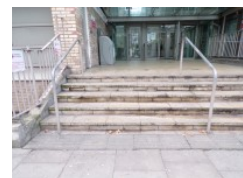
1



2



3



4



5



6

- There is a ramp/slope to access this area/service.
- The ramp/slope does bypass the step(s).
- The ramp/slope is located at the front of the building, to the right as you face the entrances.
- The ramp/slope is steep.
- The ramp/slope is permanent.
- There is a level landing at the top of the ramp/slope.
- The ramp does have handrails.
- The handrails are on both sides.
- The width of the ramp/slope is 120cm (3ft 11in).
- There is a/are step(s) to access this area/service.
- The step(s) is/are located at the front of the building.
- There is/are 5 step(s) to the area/service.
- There is tactile paving at the top and bottom of the steps.
- The step(s) is/are not clearly marked.
- The step(s) is/are medium height (11cm - 17cm).
- There is a/are handrail(s) at the step(s).
- The handrail(s) is/are in the centre of the step(s).

Comments

[View](#)

- This level change is for access to both main entrances.

Outside Access (Main Entrance - Automatic)



Photos



1



2

Entrance

View

- This information is for the entrance located at the front of the building.
- There is ramped/sloped or stepped access at this entrance.
- There is not a bell/buzzer.
- There is not an intercom.
- There is a canopy or recess which provides weather protection at this entrance.
- The main door(s) open(s) automatically (towards you).
- The door(s) is/are push pad activated.
- The door(s) is / are single.
- The width of the door opening is 100cm (3ft 3in).
- There is a second set of doors.
- The door(s) open(s) automatically (towards you).
- The door(s) is / are push pad activated.
- The door(s) is / are single.
- The width of the door opening is 100cm (3ft 3in).

Outside Access (Main Entrance - Manual)



Photos



1



2

Entrance

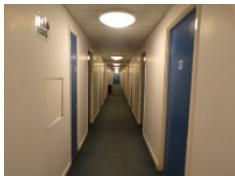
View

- This information is for the entrance located at the front of the building.
- There is ramped/sloped or stepped access at this entrance.
- There is not a bell/buzzer.
- There is not an intercom.
- There is a canopy or recess which provides weather protection at this entrance.
- The main door(s) open(s) towards you (pull).
- The door(s) is / are double.
- The door(s) is / are heavy.
- The width of the door opening is 170cm (5ft 7in).
- There is a second set of doors.
- The door(s) open(s) towards you (pull).
- The door(s) is / are double.
- The door(s) is / are heavy.
- The width of the door opening is 170cm (5ft 7in).

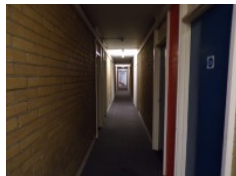
Getting Around



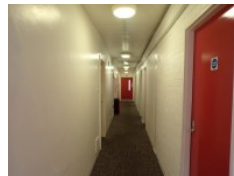
Photos



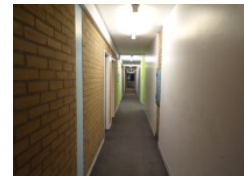
1



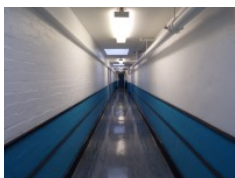
2



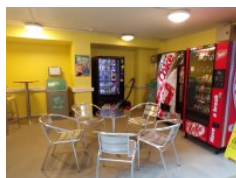
3



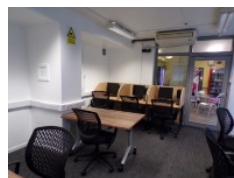
4



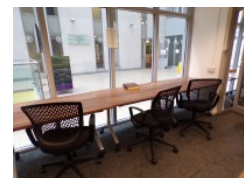
5



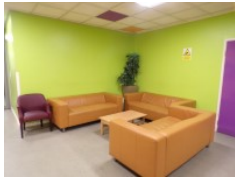
6



7



8



9



10

Access

[View](#)

- There is step free access throughout the majority of the building, via lift.

Comments

[View](#)

- There are study spaces on the ground floor straight ahead as you enter. This is shown in photographs 7 and 8.
- The LG lounge is a lounge area available for students on the lower ground floor, adjacent to the dining hall. This is shown in photographs 9 and 10.

Reception (International Hall Reception)



Photos



1



2



3



4



5

- International Hall Reception is located straight ahead as you enter.
- The desk is 5m (5yd 1ft) from the main entrance.

- The reception area is clearly visible from the entrance.
- There is step free access to this reception area.
- The lighting levels in the reception area are medium.
- The reception desk/counter is high (110cm+).
- There is not a low section of the counter (76cm or below) available.
- The desk is staffed.
- There is a hearing assistance system.
- The type of system is a portable loop.
- The hearing system is available only on request.
- The hearing assistance system is signed.
- Staff are trained to use the hearing system.

Comments

[View](#)

- There are turnstiles and a gate at this reception. The gate is 90cm wide and the turnstile is 60cm wide. This is shown in photographs 3, 4 and 5.

Accommodation



Photos



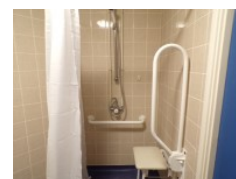
1



2



3



4

Location of Accessible Accommodation

[View](#)

- The establishment provides 2 accessible accommodation facilities with an ensuite and/or separate accessible bathroom.
- This information refers to GC01.
- The accessible facilities are located to the left as you enter.

- There is level access from an accessible entrance.
- The room number viewed was GC01.
- The width of the door to the room is 87cm (2ft 10in).
- The dimensions of the clear floor space are 170cm x 210cm (5ft 7in x 6ft 11in).
- The bed is 62cm (2ft) high.
- Light switches are within 120cm (4ft) from floor level.
- There is a functional emergency alarm in the room.
- It is a push button style of alarm.
- Assistance dogs are welcome to stay with residents in accessible accommodation.

Accessible Bathroom

View

- The information relates to the ensuite.
- The dimensions of the bathroom are 286cm x 150cm (9ft 5in x 4ft 11in).
- The door opens outwards.
- The width of the door to the bathroom is 87cm (2ft 10in).
- The door weight is heavy.
- There is a functional emergency alarm in the bathroom.
- The door is locked by a The door does not have a lock.
- The height of the toilet seat above floor level is 48cm (1ft 7in).
- There is a toilet roll holder.
- The toilet roll holder can be reached from seated on the toilet.
- The toilet roll holder is not placed higher than 100cm in height.
- There is a wash basin.
- The wash basin can be reached from seated on the toilet.
- The height of the wash basin is 76cm (2ft 6in).
- There is a mixer tap.
- The tap type is lever.
- There is a lateral transfer space.

- The measurement of lateral transfer space is 74cm (2ft 5in).
- As you face the toilet pan the transfer space is on the left.
- There is a dropdown rail on the transfer side.
- There is not a flush on the transfer side.
- Wall mounted grab rails are available for the toilet.
- As you face the toilet pan the wall mounted grab rails are on both sides.
- There are mirrors.
- The mirrors are not placed at a lower level or at an angle for ease of use.
- Disposal facilities are not available.

Bath and Shower

View

- There is not a bath.

Wheel In Shower

View

- There is a wheel in shower.
- The shower head height is adjustable.
- The type of shower controls used are lever.
- The shower seat is flip-down.
- The shower seat height is 52cm (1ft 8in).
- There are handrails available for the shower.

Colour contrast and lighting in accessible rooms

View

- The colour contrast between the external room door and wall is good.
- The colour contrast between the walls and floor is good.
- The colour contrast between the internal room door and wall is good.
- The colour contrast between external ensuite / bathroom door and wall is good.

- The lighting levels are medium.

Colour contrast and lighting in accessible bathroom

[View](#)

- The colour contrast between the internal bathroom door and wall is good.
- The colour contrast between the walls and floor in the bathroom is good.
- The colour contrast between the drop down rails and wall is good.
- The colour contrast between the grab rails and wall is good.
- Lighting levels are medium.

Auxiliary Aids - General

[View](#)

- Assistance dogs are welcome to stay with residents in standard rooms.
- There is / are 2 accessible room(s) with a wheel in shower.

Ground Floor Rooms

[View](#)

- Ground floor rooms do have level access.
- None of these rooms are accessed by platform lift.
- Rooms are located off the corridors.
- Adjoining rooms are not available.

Standard Rooms on Other Floors

[View](#)

- There are standard rooms on other floors.
- The other floors can be accessed by lift.
- There is level access to standard rooms on other floors.
- Adjoining rooms are not available.

Comments

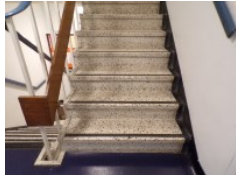
[View](#)

- There are no auxiliary aids placed in the rooms, but they can be requested to be installed by the university.

Other Floors



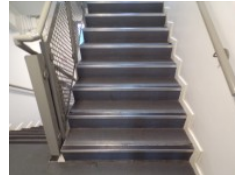
Photos



1



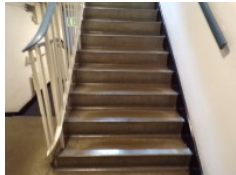
2



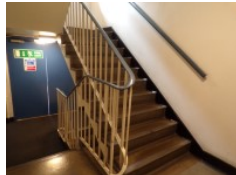
3



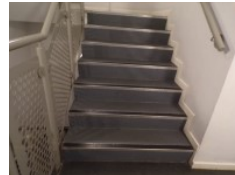
4



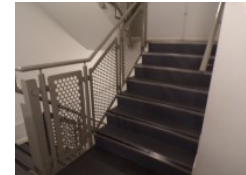
5



6



7



8

Steps

View

- The floors which are accessible by stairs are B, G, 1, 2, 3, 4 and 5.
- The stairs are located to the right as you enter.
- The stairs are approximately 15m from the main entrance.
- There are 15+ steps between floors.
- The lighting levels are medium.
- The steps are clearly marked.
- The steps are medium height (11cm - 17cm).
- The steps do have handrails.
- The steps have a handrail on both sides.
- There is a landing.
- There are multiple similar staircases throughout the building, accessed by the corridors on each floor. Some are shown in photographs 3-8.

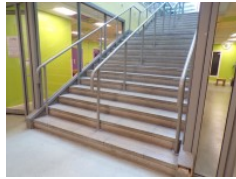
Other Floors (Lower Ground Stairs)



Photos



1



2

Steps

View

- The floors which are accessible by stairs are B and G.
- The stairs are located straight ahead as you enter.
- The stairs are approximately 8m from the main entrance.
- There are 15+ steps between floors.
- The lighting levels are medium.
- The steps are not clearly marked.
- The steps are medium height (11cm - 17cm).
- The steps do have handrails.
- The steps have a handrail on both sides.
- There is a landing.

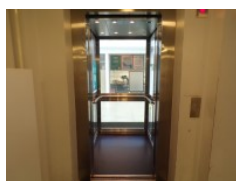
Lift (Central Lift)



Photos



1



2

- There is a lift for public use.
- The lift is located straight ahead as you enter.
- The lift is a standard lift.
- The floors which are accessible by this lift are LG, G, 1, 2, 3, 4 and 5.
- Wall mounted information boards are not provided at lift landings.
- The weight limit for the lift is 630kg.
- The lift is approximately 30m (32yd 2ft) from the main entrance.
- Staff do not need to be notified for use of the lift.
- The clear door width is 80cm (2ft 7in).
- The dimensions of the lift are 108cm x 140cm (3ft 7in x 4ft 7in).
- There are not separate entry and exit doors in the lift.
- There is not a mirror to aid reversing out of the lift.
- The lift does not have a visual floor indicator.
- The lift does have an audible announcer.
- The lift does not have a hearing loop system.
- The lift does not have Braille markings.
- The lift does not have tactile markings.
- The controls for the lift are within 90cm - 120cm from the floor.
- The lighting level in the lift is medium.

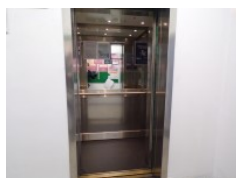
Lift (Right Side Lift)



Photos



1



2

-
- There is a lift for public use.
 - The lift is located to the right as you enter.

- The lift is a standard lift.
- The floors which are accessible by this lift are LG, G, 1, 2, 3, 4 and 5.
- Wall mounted information boards are not provided at lift landings.
- The lift is approximately 15m (16yd 1ft) from the main entrance.
- Staff do not need to be notified for use of the lift.
- The clear door width is 91cm (2ft 12in).
- The dimensions of the lift are 168cm x 103cm (5ft 6in x 3ft 5in).
- There are not separate entry and exit doors in the lift.
- There is a mirror to aid reversing out of the lift.
- The lift does have a visual floor indicator.
- The lift does have an audible announcer.
- The lift does have a hearing loop system.
- The lift does not have Braille markings.
- The lift does have tactile markings.
- The controls for the lift are not within 90cm - 120cm from the floor.
- The lighting level in the lift is medium.

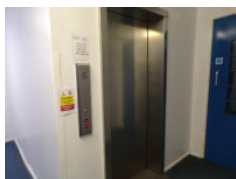
Comments

[View](#)

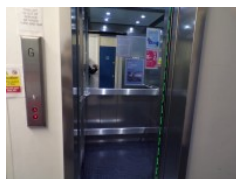
- There is a similar lift to the left of the one surveyed.

Lift (West Wing Lift)

Photos



1



2

-
- There is a lift for public use.
 - The lift is located towards the rear of the building, on the left side.

- The lift is a standard lift.
- The floors which are accessible by this lift are LG, G, 1, 2, 3, 4 and 5.
- Wall mounted information boards are not provided at lift landings.
- The weight limit for the lift is 600kg.
- The lift is approximately 70m (76yd 1ft) from the main entrance.
- Staff do not need to be notified for use of the lift.
- The clear door width is 85cm (2ft 9in).
- The dimensions of the lift are 128cm x 98cm (4ft 2in x 3ft 3in).
- There are not separate entry and exit doors in the lift.
- There is a mirror to aid reversing out of the lift.
- The lift does have a visual floor indicator.
- The lift does have an audible announcer.
- The lift does not have a hearing loop system.
- The lift does not have Braille markings.
- The lift does have tactile markings.
- The controls for the lift are within 90cm - 120cm from the floor.
- The lighting level in the lift is medium.

Lift (North Wing Lift)

Photos



1



2

-
- There is a lift for public use.
 - The lift is located towards the rear of the building, on the right side.
 - The lift is a standard lift.
 - The floors which are accessible by this lift are G, 1, 2, 3, 4 and 5.

- Wall mounted information boards are not provided at lift landings.
- The platform lift accesses a small level change.
- The weight limit for the lift is 630kg.
- The lift is approximately 45m (49yd 8in) from the main entrance.
- Staff do not need to be notified for use of the lift.
- The clear door width is 90cm (2ft 11in).
- The dimensions of the lift are 185cm x 100cm (6ft 1in x 3ft 3in).
- There are not separate entry and exit doors in the lift.
- There is a mirror to aid reversing out of the lift.
- The lift does have a visual floor indicator.
- The lift does have an audible announcer.
- The lift does not have a hearing loop system.
- The lift does not have Braille markings.
- The lift does have tactile markings.
- The controls for the lift are within 90cm - 120cm from the floor.
- The lighting level in the lift is medium.

Eating and Drinking (Dining Hall)



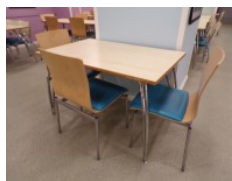
Photos



1



2



3



4



5



6



7



8

-
- The following information is for the refectory.

- Full table service is not available.
- Food or drinks are ordered from the service counter.
- Food or drinks cannot be brought to the table.
- No tables are permanently fixed.
- No chairs are permanently fixed.
- No chairs have armrests.
- The nearest table is 8m (8yd 2ft) from the central lift.
- The standard height for tables is 77cm.
- There is ample room for a wheelchair user to manoeuvre.
- Plastic / takeaway cups are not available.
- Plastic / takeaway cutlery is not available.
- Drinking straws are available.
- Menus are wall only.
- Menus are not available in Braille.
- Menus are not available in large print.
- Picture menus are not available.
- Menus are clearly written.
- Menus are presented in contrasting colours.
- The type of food served here is hot and cold meals and snacks.

Comments

[View](#)

- There is a conservatory area shown in photograph 8 that sometimes has additional seating.

Accessible Toilet (G)

Photos



-
- Accessible toilet facilities are available.

Location and Access

View

- The toilet is not for the sole use of disabled people.
- There is pictorial signage on or near the toilet door.
- This accessible toilet is approximately 30m (32yd 2ft) from the main entrance.
- The accessible toilet is located to the left as you enter.
- There is level access to this accessible toilet.

Features and Dimensions

View

- This is a shared toilet.
- A key is not required for the accessible toilet.
- The door opens outwards.
- The door is locked by a lever twist.
- The width of the accessible toilet door is 90cm (2ft 11in).
- The door is light.
- The dimensions of the accessible toilet are 170cm x 210cm (5ft 7in x 6ft 11in).
- There is a clear 150cm x 150cm manoeuvring space in the accessible toilet.
- There is a lateral transfer space.
- As you face the toilet pan the transfer space is on the right.
- The lateral transfer space is 95cm (3ft 1in).
- There is a dropdown rail on the transfer side.
- There is a flush on the transfer side.
- The tap type is lever.
- There is a mixer tap.

- There is an emergency pull cord alarm in the cubicle.
- The emergency pull cord alarm is not fully functional.
- The alarm was out of reach (higher than 10cm (4") from floor) when surveyed.
- Disposal facilities are available in the cubicle.
- There is a/are female sanitary and waste paper pedal bin disposal units.
- There is not a/are not coat hook(s).

Position of Fixtures

View

- Wall mounted grab rails are available for the toilet.
- As you face the toilet the wall-mounted grab rails are on both sides.
- There is a shelf within the accessible toilet.
- The shelf is not higher than 95cm (3ft 1in).
- There is a mirror.
- Mirrors are not placed at a lower level or at an angle for ease of use.
- The height of the toilet seat above floor level is 47cm (1ft 7in).
- There is a hand dryer.
- The hand dryer cannot be reached from seated on the toilet.
- The hand dryer is not placed higher than 100cm (3ft 3in).
- There is not a towel dispenser.
- There is a toilet roll holder.
- The toilet roll holder can be reached from seated on the toilet.
- The toilet roll holder is not placed higher than 100cm (3ft 3in).
- There is a wash basin.
- The wash basin can be reached from seated on the toilet.
- The wash basin is not placed higher than 74cm (2ft 5in).
- There is a soap dispenser.
- The soap dispenser cannot be reached from seated on the toilet.

- The height of the soap dispenser is 90cm.

Colour Contrast and Lighting

[View](#)

- The contrast between the internal door and wall is good.
- The contrast between the external door and wall is good.
- The contrast between the wall-mounted grab rail(s) and wall is good.
- The contrast between the dropdown rail(s) and wall is good.
- The toilet seat colour contrast is poor.
- The contrast between the walls and floor is good.
- The lighting levels are medium.

Accessible Toilet (LG)

Photos



1



2

-
- Accessible toilet facilities are available.

Location and Access

[View](#)

- The toilet is not for the sole use of disabled people.
- There is pictorial signage on or near the toilet door.
- This accessible toilet is approximately 4m (4yd 1ft) from the central lift.
- This accessible toilet is located in front of the entrance to the Dining Hall.
- There is level access to this accessible toilet.

- This is by lift.

Features and Dimensions

View

- This is a shared toilet.
- A key is not required for the accessible toilet.
- The door opens outwards.
- The door is locked by a lever twist.
- The width of the accessible toilet door is 90cm (2ft 11in).
- The door is light.
- The dimensions of the accessible toilet are 265cm x 215cm (8ft 8in x 7ft 1in).
- There is a clear 150cm x 150cm manoeuvring space in the accessible toilet.
- There is a lateral transfer space.
- As you face the toilet pan the transfer space is on the right.
- The lateral transfer space is 125cm (4ft 1in).
- There is a dropdown rail on the transfer side.
- There is a flush on the transfer side.
- The tap type is lever.
- There is a mixer tap.
- There is an emergency pull cord alarm in the cubicle.
- The emergency pull cord alarm is not fully functional.
- The alarm was out of reach (higher than 10cm (4") from floor) when surveyed.
- Disposal facilities are available in the cubicle.
- There is a/are female sanitary and waste paper pedal bin disposal units.
- There is not a/are not coat hook(s).

Position of Fixtures

View

- Wall mounted grab rails are available for the toilet.

- As you face the toilet the wall-mounted grab rails are on both sides.
- There is not a shelf within the accessible toilet.
- There is a mirror.
- Mirrors are not placed at a lower level or at an angle for ease of use.
- The height of the toilet seat above floor level is 47cm (1ft 7in).
- There is a hand dryer.
- The hand dryer cannot be reached from seated on the toilet.
- The hand dryer is placed higher than 100cm (3ft 3in).
- The height of the hand dryer is 135cm (4ft 5in).
- There is not a towel dispenser.
- There is a toilet roll holder.
- The toilet roll holder can be reached from seated on the toilet.
- The toilet roll holder is placed higher than 100cm (3ft 3in).
- The height of the toilet roll holder is 105cm (3ft 5in).
- There is a wash basin.
- The wash basin can be reached from seated on the toilet.
- The wash basin is not placed higher than 74cm (2ft 5in).
- There is a soap dispenser.
- The soap dispenser cannot be reached from seated on the toilet.
- The height of the soap dispenser is 100cm.

Colour Contrast and Lighting

View

- The contrast between the internal door and wall is good.
- The contrast between the external door and wall is good.
- The contrast between the wall-mounted grab rail(s) and wall is good.
- The contrast between the dropdown rail(s) and wall is good.
- The toilet seat colour contrast is poor.
- The contrast between the walls and floor is good.

- The lighting levels are medium.

Standard Toilet(s)

Photos



1



2

Location of Standard Toilet(s)

[View](#)

- There are male and female standard toilets facilities on all floors.

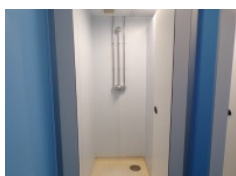
Standard Toilet Surveyed

[View](#)

- A male standard toilet was surveyed.
- The toilet surveyed is located to the left as you enter.
- There is a female standard toilet in the same location.
- The standard toilet surveyed is approximately 33m from the main entrance.
- There is not a/are not cubicle(s) suitable for ambulant disabled people in the standard toilet(s) surveyed.
- Lighting levels in the standard toilet surveyed are good.

Standard Shower

Photos



1



2

- Shower facilities are available.
- The shower(s) surveyed is/are located on the ground floor off of the corridor.
- There is level access to the services from the shower facilities.

Comments

View

- There is a single deep step used to access the shower, shown in photograph 2.
- There are similar showers on all other floors. These can be accessed via lift.