



AccessAble

Your Accessibility Guide

The new name for DisabledGo

Nutford House Annex 2

The University of London, 95 Seymour Place, London, W1H 5TG

020 7862 8881 (tel:020 7862 8881)

Send email (<mailto:info.halls@london.ac.uk>)

Visit website (<https://halls.london.ac.uk/>)



Access Guide

Introduction

- Services / facilities within the building include standard accommodation.
- **Nutford House link (new tab) - click here**
(<https://www.accessable.co.uk/venues/nutford-house>).
- **Nutford House Annex 2 link (new tab) - click here**
(<https://www.accessable.co.uk/venues/nutford-house-annex-2>).

Getting Here

By Road

View

- The building is located near to Edgware road in central London.

- There is a staff only car park for all Nutford House venues. There is also the Edgeware Road NCP Car Park located nearby.

By Bus

[View](#)

- The nearest bus stop is the George Street bus stop which is located on Edgeware Road and serves routes 6, 7, 16, 23, 36, 98, 414, N7, N16, and N98.

By Train

[View](#)

- The nearest Railway Station is London Marylebone a distance of 0.5 miles from the building. Paddington Railway station is slightly further away a distance of 0.8 miles from the building.

By Underground

[View](#)

- The closest underground station to the building is Marble Arch which is located 0.3 miles away. The station is on the Central Line. The Edgeware Road station is also located 0.3 miles from the building. This station is located on the Bakerloo, Circle, District and Hammersmith and City Lines.

Useful Links

[View](#)

- The National Rail Enquiries website.
- [To view the web page described above click here \(opens in new tab\) \(http://www.nationalrail.co.uk/\)](http://www.nationalrail.co.uk/).
- Edgeware Road Station.
- [To view the web page described above click here \(opens in new tab\) \(https://tfl.gov.uk/tube/stop/940GZZLUERC/edgeware-road-circle-line-underground-station/\)](https://tfl.gov.uk/tube/stop/940GZZLUERC/edgeware-road-circle-line-underground-station/).
- Marble Arch Station.
- [To view the web page described above click here \(opens in new tab\) \(https://tfl.gov.uk/tube/stop/940GZZLUMBA/marble-arch-underground-station/\)](https://tfl.gov.uk/tube/stop/940GZZLUMBA/marble-arch-underground-station/).

Useful Information

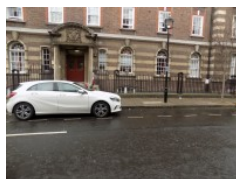
- **To see more information on Student Advice Centre please click here (opens new tab)** (<https://london.ac.uk/ways-study/study-campus-london/student-services-and-support>).
- Telephone Number: +44 (0)20 7862 8360.
- Offices for the Student Advice Centre are located in Senate House and Stewart House.
- **To see more information on Housing Services please click here (opens new tab)** (<https://housing.london.ac.uk/>).
- Telephone Number: +44 (0)20 7862 8880.
- Email: housing@london.ac.uk.

Building Parking

Photos



1



2



3

-
- The building does not have its own dedicated parking.

Public Car Parks

[View](#)

- There is a car park for public use within 200m (approx).
- The name of the car park is Edgeware Road Car Park.
- The car park is located off Shouldham Street.
- Clearly signed and/or standard marked parking bays are available.
- The on street standard parking bay(s) is/are located on Brown Street.

Drop Off Point

View

- There is not a designated drop off point.

Site/Campus Car Park



Photos



1



2



3



4



5

Car Park

View

- The car park is located between Nutford Annexe 1 and Nutford Annexe 2.
- The nearest building(s) to this car park is/are Nutford Annexe 1, Nutford Annexe 2 and Nutford House.
- The car park type is open air/surface.
- The car park does have a height restriction barrier.
- The maximum height is 265cm (8ft 8in).
- The car park surface is tarmac.
- Designated Blue Badge parking bays are not available.

Charges and Restrictions

View

- This car park can be used by staff permit holders.
- There are no parking charges that apply on the day.

- Signs are provided to give information on parking charges/restrictions.
- Signs are clearly presented.

Drop Off Point

[View](#)

- There is not a designated drop off point in this car park.

Car Park Access

[View](#)

- There is ramped access to the car park from the street.
- This car park is not clearly signposted from the Nutford Annexe 1.

Outside Access (Main Entrance)

Photos



1



2



3

Entrance

[View](#)

- This information is for the entrance located at the front of the building.
- There is stepped access at this entrance.
- There is a bell/buzzer.
- The height of the bell/buzzer is 126cm (4ft 2in).
- There is not an intercom.
- A key fob is required for access at this entrance.
- The height of the card reader/lock is 136cm (4ft 6in).
- There is a canopy or recess which provides weather protection at this entrance.

- The main door(s) open(s) away from you (push).
- The door(s) is / are single.
- The door(s) is / are heavy.
- The width of the door opening is 86cm (2ft 10in).
- There is a second set of doors.
- The door(s) open(s) towards you (pull).
- The door(s) is / are single.
- The door(s) is / are heavy.
- The width of the door opening is 84cm (2ft 9in).

Step(s)

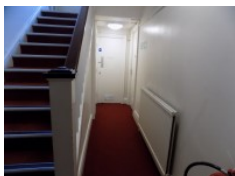
[View](#)

- There is a / are step(s) at this entrance.
- The step(s) is / are located in front of the entrance.
- There is / are 2 step(s) to access the entrance.
- There is not tactile paving at the top and bottom of the step(s).
- The step(s) is / are not clearly marked.
- The step(s) is / are medium height (11cm - 17cm).
- The steps do not have handrails.

Getting Around



Photos



1



2



3

Access

[View](#)

- There is step free access throughout the ground floor.

- There are not doors in corridors which have to be opened manually.

Getting Around

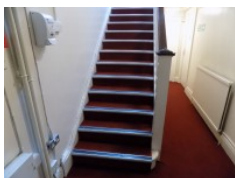
View

- There is clear signage for building facilities/areas in the foyer/reception area.
- There is clearly written directional signage at key points of circulation routes.
- There is good colour contrast between the walls and floor in all areas.
- The lighting levels are good.
- This building does not play background music.
- There is not a hearing assistance system.

Other Floors



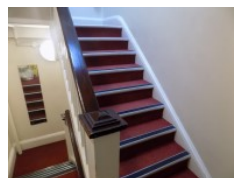
Photos



1



2



3

Steps

View

- The floors which are accessible by stairs are in front of the entrance.
- The stairs are located B, G, 1, 2 and 3.
- The stairs are approximately 6m from the main entrance.
- There are 15+ steps between floors.
- There are manual, heavy, single doors to access the stairwell on the basement floor.
- The lighting levels are bright.

- The steps are clearly marked.
- The steps are medium height (11cm - 17cm).
- The steps do have handrails.
- The steps have a handrail on the right going up.
- There is a landing.

Comments

[View](#)

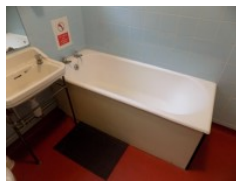
- The stairs to the basement can be seen in photograph 2.
- The stairs further up the building vary with some having their handrail on the left. As can be seen in photograph 3.

Accommodation

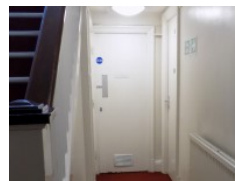
Photos



1



2



3



4



5



6

Ground Floor Rooms

[View](#)

- Ground floor rooms do have level access.
- None of these rooms are accessed by platform lift.
- Adjoining rooms are not available.

Standard Rooms on Other Floors

[View](#)

- There are standard rooms on other floors.
- The other floors cannot be accessed by lift.
- Adjoining rooms are not available.

Comments

View

- The door to the bathroom on the ground floor has a width of 64cm. This can be seen in photograph 3.
- The kitchen is located on the basement floor which can be seen in photographs 5 and 6.