



# AccessAble

Your Accessibility Guide

The new name for DisabledGo

## Nutford House

The University of London, Brown Street, London, W1H 5UL

020 7862 8881 (tel:020 7862 8881)

Send email (<mailto:info.halls@london.ac.uk>)

Visit website (<https://halls.london.ac.uk/>)



## Access Guide

### Introduction

- Services / facilities within the building include catered standard accommodation.
- **Nutford Annexe 1 link (new tab) - click here**  
(<https://www.accessable.co.uk/venues/nutford-house-annex-1>).
- **Nutford Annexe 2 link (new tab) - click here**  
(<https://www.accessable.co.uk/venues/nutford-house-annex-2>).

## Getting Here

### By Road

**View**

- The building is located near to Edgeware road in central London.

- There is a staff only car park for all Nutford House venues. There is also the Edgeware Road NCP Car Park located nearby.

## By Bus

[View](#)

- The nearest bus stop is the George Street bus stop which is located on Edgeware Road and serves routes 6, 7, 16, 23, 36, 98, 414, N7, N16, and N98.

## By Train

[View](#)

- The nearest Railway Station is London Marylebone a distance of 0.5 miles from the building. Paddington Railway station is slightly further away a distance of 0.8 miles from the building.

## By Underground

[View](#)

- The closest underground station to the building is Marble Arch which is located 0.3 miles away. The station is on the Central Line. The Edgeware Road station is also located 0.3 miles from the building. This station is located on the Bakerloo, Circle, District and Hammersmith and City Lines.

## Useful Links

[View](#)

- The National Rail Enquiries website.
- [To view the web page described above click here \(opens in new tab\) \(http://www.nationalrail.co.uk/\)](http://www.nationalrail.co.uk/).
- Edgeware Road Station.
- [To view the web page described above click here \(opens in new tab\) \(https://tfl.gov.uk/tube/stop/940GZZLUERC/edgware-road-circle-line-underground-station\)](https://tfl.gov.uk/tube/stop/940GZZLUERC/edgware-road-circle-line-underground-station).
- Marble Arch Station.
- [To view the web page described above click here \(opens in new tab\) \(https://tfl.gov.uk/tube/stop/940GZZLUMBA/marble-arch-underground-station/\)](https://tfl.gov.uk/tube/stop/940GZZLUMBA/marble-arch-underground-station/).

# Useful Information

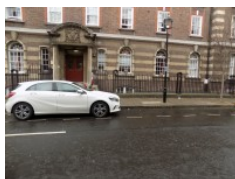
- **To see more information on Student Advice Centre please click here (opens new tab)** (<https://london.ac.uk/ways-study/study-campus-london/student-services-and-support>).
- Telephone Number: +44 (0)20 7862 8360.
- Offices for the Student Advice Centre are located in Senate House and Stewart House.
- **To see more information on Housing Services please click here (opens new tab)** (<https://housing.london.ac.uk/>).
- Telephone Number: +44 (0)20 7862 8880.
- Email: [housing@london.ac.uk](mailto:housing@london.ac.uk).

## Building Parking

### Photos



1



2



3

- 
- The building does not have its own dedicated parking.

### Public Car Parks

[View](#)

- There is a car park for public use within 200m (approx).
- The name of the car park is Edgeware Road Car Park.
- The car park is located off Shouldham Street.
- Clearly signed and/or standard marked parking bays are available.
- The on street standard parking bay(s) is/are located on Brown Street.

### Drop Off Point

**View**

- There is not a designated drop off point.

## Site/Campus Car Park



### Photos



1



2



3



4



5

---

## Car Park

**View**

- The car park is located between Nutford Annexe 1 and Nutford Annexe 2.
- The nearest building(s) to this car park is/are Nutford Annexe 1, Nutford Annexe 2 and Nutford House.
- The car park type is open air/surface.
- The car park does have a height restriction barrier.
- The maximum height is 265cm (8ft 8in).
- The car park surface is tarmac.
- Designated Blue Badge parking bays are not available.

## Charges and Restrictions

**View**

- This car park can be used by staff permit holders.
- There are no parking charges that apply on the day.

- Signs are provided to give information on parking charges/restrictions.
- Signs are clearly presented.

## Drop Off Point

[View](#)

- There is not a designated drop off point in this car park.

## Car Park Access

[View](#)

- There is ramped access to the car park from the street.
- This car park is not clearly signposted from the Nutford Annexe 1.

# Outside Access (Main Entrance)



## Photos



1



2



3



4

## Entrance

[View](#)

- This information is for the entrance located at the front of the building off Brown Street.
- There is stepped access at this entrance.
- There is a bell/buzzer.
- The height of the bell/buzzer is 145cm (4ft 9in).
- There is not an intercom.
- A key fob is required for access at this entrance.
- The height of the card reader/lock is 142cm (4ft 8in).
- There is a canopy or recess which provides weather protection at this entrance.

- The main door(s) open(s) towards you (pull).
- The door(s) is / are double.
- The door(s) is / are heavy.
- The width of the door opening is 135cm (4ft 5in).
- There is a second set of doors.
- The door(s) open(s) towards you (pull).
- The door(s) is / are double.
- The door(s) is / are heavy.
- The width of the door opening is 140cm (4ft 7in).

## Step(s)

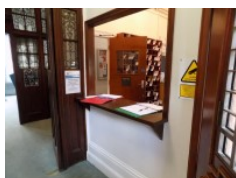
**View**

- There is a / are step(s) at this entrance.
- The step(s) is / are located in front of the entrance.
- There is / are 6 step(s) to access the entrance.
- There is not tactile paving at the top and bottom of the step(s).
- The step(s) is / are clearly marked.
- The step(s) is / are medium height (11cm - 17cm).
- The steps do not have handrails.

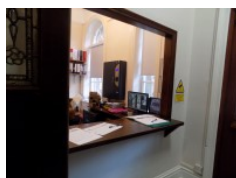
## Reception (Nutford Halls Main Reception)



### Photos



1



2

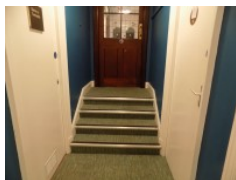
- Nutford Halls Main Reception is located between the first and second sets of door at the main entrance.
- The reception area is clearly visible from the entrance.

- There is step free access to this reception area.
- The lighting levels in the reception area are bright.
- The reception desk/counter is medium height (77cm - 109cm).
- There is not a low section of the counter (76cm or below) available.
- The desk is staffed.
- There is not a hearing assistance system.

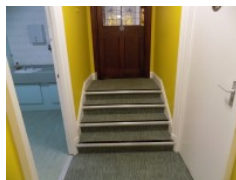
## Getting Around



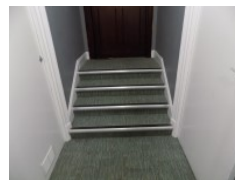
### Photos



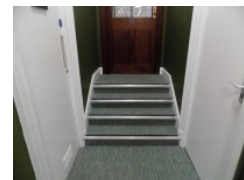
1



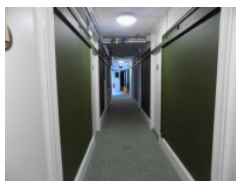
2



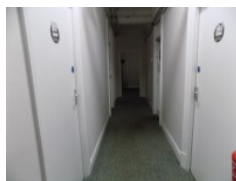
3



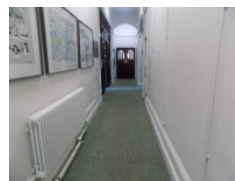
4



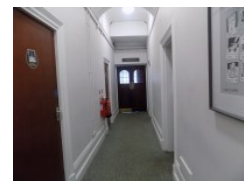
5



6



7



8



9



10

### Access

#### View

- There is step free access throughout the majority of the building, via lift.
- There is/are 4 clearly marked step(s), with no handrails, for access to 116 - 121, baths, shower and toilets.
- The step(s) is/are deep (18cm+).
- There are similar sets of steps on the second, third and fourth floors. The steps on the second floor lead to 218 - 223 as well as

toilets and bathing facilities. The steps can be seen in photograph 2. The steps on the third floor lead to 318 - 323 as well as toilets and bathing facilities. The steps can be seen in photograph 3. The steps on the fourth floor lead to 417 - 422 as well as toilets and bathing facilities. The steps can be seen in photograph 4.

- There are doors in corridors which have to be opened manually.

## Getting Around

**View**

- There is clear signage for building facilities/areas in the foyer/reception area.
- There is clearly written directional signage at key points of circulation routes.
- There is good colour contrast between the walls and floor in all areas.
- The lighting levels are good.
- This building does not play background music.
- There is not a hearing assistance system.

## Comments

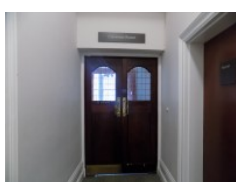
**View**

- There are pantries located on the ground, first, second, third and fourth floors.
- One of the pantries can be seen in photographs 9 and 10.

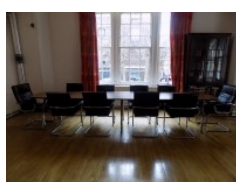
## Common Room



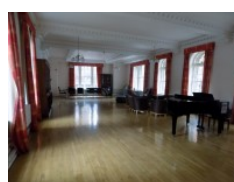
### Photos



1



2



3



4



- The common room is located at the end of the corridor to your left on entrance to the building. The doors into the common room consist of a set of heavy double doors with a width of 120cm.
- The surface of the floor in the common room is slippery.
- The tables in the room vary from 36cm to 74cm in height.
- There is a piano and a selection on reading material available for students.
- It is necessary to pass through the common room to reach rooms to the rear left of the venue on the ground floor.

## Lounge



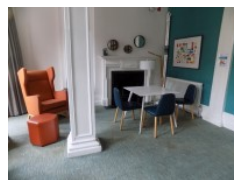
### Photos



1



2



3



4

- 
- The room is accessed by a set of heavy double doors with a width of 132cm.
  - The tables have height of 36cm and 76cm.
  - There are chairs with armrests on each side.
  - The main entrance to the garden is located in this room.

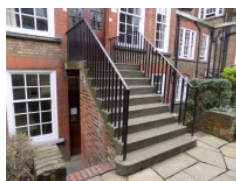
## Garden



### Photos



1



2



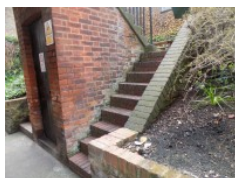
3



4



5



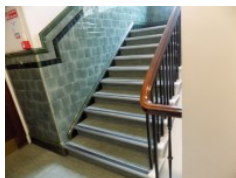
6

- The garden is accessed by a single door with one leaf locked that has a width of 64cm. Which can be seen in photograph 1.
- This entrance is followed by 9 deep steps. Which can be seen in photograph 2.
- There are seating areas around the garden which has surfaces of either grass or uneven block paving.
- There is a lower area of the garden accessed via the basement floor.
- There are 9 steps between this area and the main area. This can be seen in photograph 6.

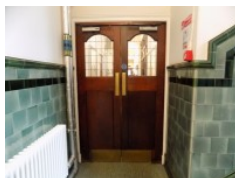
## Other Floors



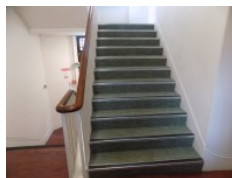
### Photos



1



2



3

## Steps

### View

- The floors which are accessible by stairs are B, G, 1, 2, 3 and 4.
- The stairs are located to your right on entrance.
- The stairs are approximately 6m from the main entrance.
- There are 15+ steps between floors.
- The lighting levels are bright.
- The steps are clearly marked.
- The steps are deep (18cm+).
- The steps do have handrails.

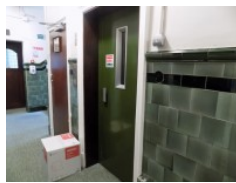
- The steps have a handrail on the right going up.
- There is a landing.
- There is a similar set of stairs to all floors to the rear left of the building. This staircase has it's handrail on the left and must be used to reach the laundry. It can be seen in photograph 3.

## Lift

### Photos



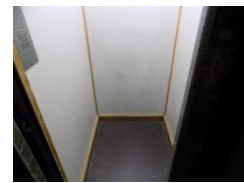
1



2



3



4

- 
- There is a lift for public use.
  - The lift is located to your right on entrance.
  - The lift is a standard lift.
  - The floors which are accessible by this lift are B, G, 1, 2, 3 and 4.
  - Wall mounted information boards are not provided at lift landings.
  - The weight limit for the lift is 300kg.
  - The lift is approximately 10m (10yd 2ft) from the main entrance.
  - Staff do not need to be notified for use of the lift.
  - The clear door width is 70cm (2ft 4in).
  - The lift door is manual, heavy and opens outwards.
  - The dimensions of the lift are 75cm x 90cm (2ft 6in x 2ft 11in).
  - There are not separate entry and exit doors in the lift.
  - There is not a mirror to aid reversing out of the lift.
  - The lift does have a visual floor indicator.
  - The lift does have an audible announcer.
  - The lift does not have a hearing loop system.

- The lift does not have Braille markings.
- The lift does have tactile markings.
- The controls for the lift are not within 90cm - 120cm from the floor.
- The highest control is at a height of 150cm.
- The lighting level in the lift is bright.

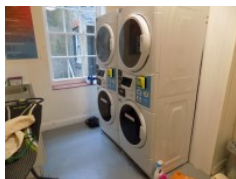
## Comments

[View](#)

- A heavy sliding gate is located between the lift door and the lift.  
This can be seen in photograph 3.

## Laundry

### Photos



1

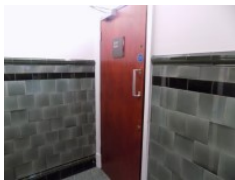


2

- 
- The laundry is located to the rear left of the building on the basement floor and can only be accessed by the staircase to the rear left of the building.
  - The door to the laundry has a width of 87cm and opens away from you.
  - The controls for the washing machines are at a height of 115cm. There are no longer dryers.
  - There is a sink in the laundry at a height of 91cm.

## Quiet Room

### Photos



1



2



3



4

- The quiet room is located to your left on exiting the lift on the basement floor.
- The doors is heavy opening away from you with a width of 76cm.
- There are a variety of tables in the room in including small height adjustable ones.

## Eating and Drinking (Dining Hall)



### Photos



1



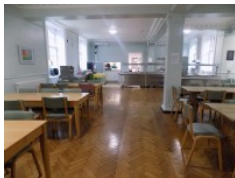
2



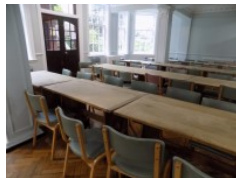
3



4



5



6

- The following information is for the restaurant.
- Full table service is not available.
- Food or drinks are ordered from the service counter.
- Food or drinks can be brought to the table.
- Some tables are permanently fixed.
- No chairs are permanently fixed.
- No chairs have armrests.
- The nearest table is 10m (10yd 2ft) from the lift.

- The distance between the floor and the lowest table is 64cm (2ft 1in).
- The distance between the floor and the highest table is 74cm (2ft 5in).
- The standard height for tables is 74cm.
- There is ample room for a wheelchair user to manoeuvre.
- Plastic / takeaway cups are not available.
- Plastic / takeaway cutlery is not available.
- Drinking straws are not available.
- Menus are wall only.
- Menus are not available in Braille.
- Menus are not available in large print.
- Picture menus are not available.
- Menus are clearly written.
- Menus are presented in contrasting colours.
- The type of food served here is breakfast, dinner and brunch on weekends.

## Comments

[View](#)

- There is a set of heavy double doors that open towards you with a width of 136cm to enter the dining hall. These can be seen in photograph 1.

## Opening Times

[View](#)

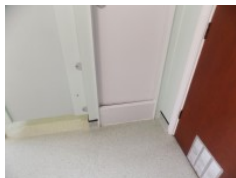
- Monday 08:00 - 09:30.
- Monday 18:00 - 19:30.
- Tuesday 08:00 - 09:30.
- Tuesday 18:00 - 19:30.
- Wednesday 08:00 - 09:30.
- Wednesday 18:00 - 19:30.
- Thursday 08:00 - 09:30.
- Thursday 18:00 - 19:30.

- Friday 08:00 - 09:30.
- Friday 18:00 - 19:30.
- Saturday 11:00 - 12:30.
- Saturday 18:00 - 19:30.
- Sunday 11:00 - 12:30.
- Sunday 18:00 - 19:30.

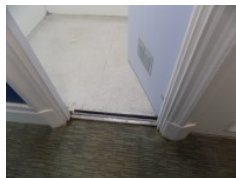
## Accommodation



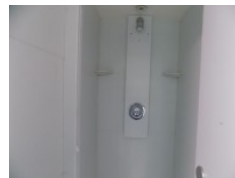
### Photos



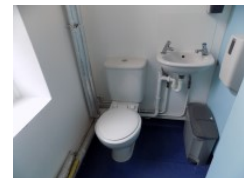
1



2



3



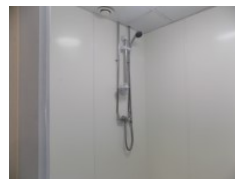
4



5



6



7

## Auxiliary Aids - General

[View](#)

- Some of the rooms have auxiliary aids for people with sensory impairments.
- Available auxiliary aids include vibrating pillows.
- Vibrating fire alarms are available on request.
- The accommodation does not provide other auxiliary aids for people with mobility impairments.
- Assistance dogs are welcome to stay with residents in standard rooms.

## Ground Floor Rooms

[View](#)

- Ground floor rooms do have level access.
- None of these rooms are accessed by platform lift.
- Rooms are located along the corridors on the ground floor.
- Adjoining rooms are not available.

## Standard Rooms on Other Floors

[View](#)

- There are standard rooms on other floors.
- The other floors can be accessed by lift.
- There is level access to standard rooms on other floors.
- This is by platform lift.
- Adjoining rooms are not available.

## Comments

[View](#)

- Shared bathrooms, showers and toilet facilities can be found throughout the building.
- There is stepped access to all showers though some of these are shallow and others are deep steps. Examples of this can be seen in photographs 1 and 2.