



AccessAble

Your Accessibility Guide

The new name for DisabledGo

Senate House - North Block

The University of London, Malet Street, London, WC1E 7HU

020 7862 8000 (tel:020 7862 8000)

Visit website (<https://london.ac.uk/>)



Access Guide

Introduction

- Services / facilities within the building include The Wohl Library, Café and Conference Facilities.
- **Senate House - South Block link (new tab) - click here**
(<https://www.accessable.co.uk/venues/senate-house-south-block>).
- **Senate House - Senate House Library link (new tab) - click here**
(<https://www.accessable.co.uk/venues/senate-house-university-of-london-main-library>).

Getting Here

By Road

[View](#)

- Exiting the M1 at junction 1 onto the North Circular road, follow until the Brent Cross interchange and turn right here onto the A41. Follow the A41 road to the end and then turn right onto the Finchley Road. Following the A41 still, the road will become the B525, continue to the end of the road and turn left onto the Outer Circle, then turn left onto Gloucester Gate and then right onto Albany Street. Follow this road till you reach the A501. Take the first exit onto the A400. Follow this road to find the building.
- There is on street parking available around the area, most of which is pay and display or for residents only. There is building parking for Senate House.

By Bus

[View](#)

- The nearest bus stop is Chenies Street (Stop D). The services that run to this stop are 14, 24, 29, 73, 134, 390, N5, N20, N29, N73, N253 and N279.

By Train

[View](#)

- The nearest train station is Euston. This is approximately a 10 minute walk away.

By Underground

[View](#)

- The nearest underground station is Goodge Street. This is approximately a 10 minute walk away.

Useful Information

- [To see more information on Student Advice Centre please click here \(opens new tab\)](https://london.ac.uk/ways-study/study-campus-london/student-services-and-support) (<https://london.ac.uk/ways-study/study-campus-london/student-services-and-support>).
- Telephone Number: +44 (0)20 7862 8360.
- Offices for the Student Advice Centre are located in Senate House and Stewart House.

- **To see more information on Housing Services please click here (opens new tab)** (<https://housing.london.ac.uk/>).
- Telephone Number: +44 (0)20 7862 8880.
- Email: housing@london.ac.uk.

Building Parking (Russell Square)

Photos



1



2



3



4

-
- The building does have its own dedicated parking.

Building Car Park

View

- The car park can be used by staff, visitors and Blue Badge holders.
- There are no parking charges that apply on the day.
- The car park is located either side of the buildings centre.
- The car park type is open air/surface.
- The car park does not have a height restriction barrier.
- Designated Blue Badge parking bays are available.
- There is/are 2 designated parking bay(s) within the car park.
- The Blue Badge bay(s) is/are clearly marked.
- The dimensions of the designated parking bay(s) are 200cm x 600cm (6ft 7in x 19ft 8in).
- The dimensions of the designated bays do not vary in size.
- Parking spaces for Blue Badge holders do not need to be booked in advance.
- The nearest designated bay is 29m (31yd 2ft) from the main entrance to south wing.

- The route from the car park to the building is accessible to a wheelchair user with assistance.
- Assistance may be required because there is / are slopes/ramps.
- The dropped kerb between the car park and the building does not have tactile paving.
- The car park surface is tarmac.

Drop Off Point

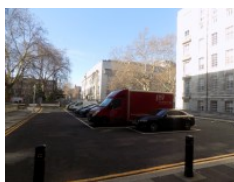
[View](#)

- There is not a designated drop off point.

Building Parking (Malet Street)



Photos



1



2

-
- The building does have its own dedicated parking.

Building Car Park

[View](#)

- The car park can be used by permit holders.
- There are no parking charges that apply on the day.
- The car park is located off Malet Street.
- The car park type is open air/surface.
- The car park does not have a height restriction barrier.
- Designated Blue Badge parking bays are not available.
- The route from the car park to the building is accessible to a wheelchair user with assistance.
- Assistance may be required because there is / are slopes/ramps.

- The car park surface is tarmac.

Drop Off Point

View

- There is not a designated drop off point.

Outside Access (Walkway Area Between North and South Block)



Photos



1



2



3



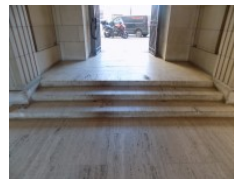
4



5



6



7

Entrance

View

- This information is for the entrance located off the Russell Square Car Park.
- There is ramped/sloped or stepped access at this entrance.
- There is not a bell/buzzer.
- There is not an intercom.
- There is a canopy or recess which provides weather protection at this entrance.
- The main door(s) open(s) both ways.
- The door(s) is / are double.
- The door(s) is / are permanently held open (at the time of the survey).

- The width of the door opening is 180cm (5ft 11in).

Ramp/Slope

View

- There is a ramp/slope at this entrance.
- The ramp/slope is located immediately beyond the entrance.
- The ramp or slope does bypass the step(s).
- The ramp/slope gradient is steep.
- The ramp is portable.
- The ramp does not have handrails.
- The width of the ramp is 123cm (4ft).

Step(s)

View

- There is a / are step(s) at this entrance.
- The step(s) is / are located immediately beyond the entrance.
- There is / are 3 step(s) to access the entrance.
- There is not tactile paving at the top and bottom of the step(s).
- The step(s) is / are not clearly marked.
- The step(s) is / are medium height (11cm - 17cm).
- The steps do not have handrails.

Comments

View

- There is a similar entrance off the Malet Street Car Park. This can be seen in photographs 4 and 5.
- There are three similar stepped entrances off both the Russel Square and Malet Street Car Parks. An example of which can be seen in photographs 6 and 7.
- After entering the Walkway Area, there is a separate entrance into both the North and South Blocks at either end of the walkway.

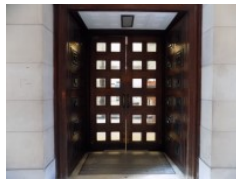
Entrance (North Block)



Photos



1



2



3

Entrance

View

- This information is for the entrance located at one end of the walkway between the South Block and the North Block.
- There is step free access at this entrance.
- There is not a bell/buzzer.
- There is not an intercom.
- The main door(s) open(s) both ways.
- The door(s) is / are double.
- The door(s) is / are heavy.
- The width of the door opening is 160cm (5ft 3in).
- There is a second set of doors.
- The main door(s) open(s) automatically.
- The door(s) is / are double.
- The width of the door opening is 143cm (4ft 8in).

Reception (Institute of Historical Research)



Photos



1



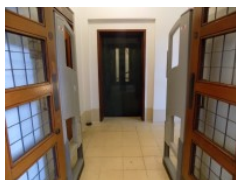
2



3



4



5

-
- Institute of Historical Research is located to your right on entrance.
 - The desk is 2m (2yd 7in) from the North Block Entrance.
 - The reception area is clearly visible from the entrance.
 - There is step free access to this reception area.
 - The lighting levels in the reception area are bright.
 - The reception desk/counter is medium height (77cm - 109cm).
 - There is a low section of the counter (76cm or below) available.
 - There is not a clear knee recess beneath the low/lowered counter.
 - The desk is staffed.
 - There is not a hearing assistance system.

Comments

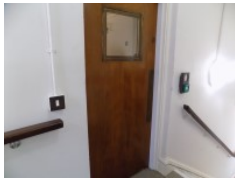
[View](#)

- Beyond the reception is an entrance gate to the rest of the building with a width of 102cm. This can be seen in photograph 3.
- There also a turnstile alternative with a width of 49cm. This can be seen in photograph 4.
- Beyond these is a barrier with a width 114cm. This can be seen in photograph 5.

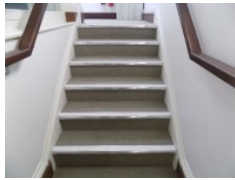
Entrance (Senate - South Block Third Floor)



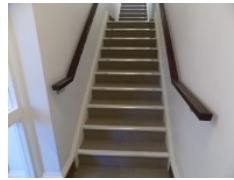
Photos



1



2



3

Entrance

View

- This information is for the entrance located between the lower mezzanine and upper mezzanine floors in Senate House - South Block.
- There is stepped access at this entrance.
- There is not a bell/buzzer.
- There is not an intercom.
- A key card is required for access at this entrance.
- The height of the card reader/lock is 110cm (3ft 7in).
- The main door(s) open(s) away from you (push).
- The door(s) is / are single.
- The door(s) is / are heavy.
- The width of the door opening is 80cm (2ft 7in).

Step(s)

View

- There is a/are step(s) at this entrance.
- The step(s) is / are located to the left and right of the entrance.
- The step(s) is / are clearly marked.
- The step(s) is / are deep (18cm+).
- The steps do have handrails.
- The handrails are on both sides going up.

Comments

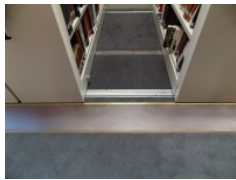
View

- When approaching the entrance from the upper Mezzanine there are 6 steps as can be seen in photograph 2.

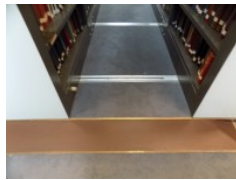
- When approaching the entrance from the lower Mezzanine there are 10 steps as can be seen in photograph 3.

Getting Around

Photos



1



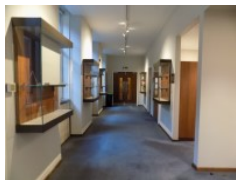
2



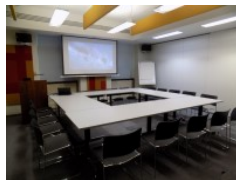
3



4



5



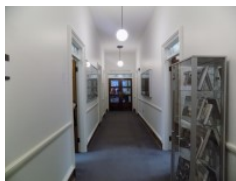
6



7



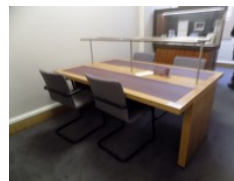
8



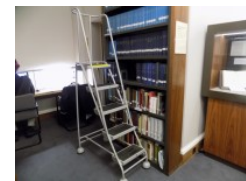
9



10



11



12

Access

View

- There is step free access throughout the majority of the building, via lift.
- There is a slight ramp, with no handrails, for access to the mobile shelving in the Wohl Library.
- There are similar slopes to access all mobile shelving areas within the library. The slope to access the mobile shelving on the basement floor can be seen in photograph 1. The slope to access the mobile shelving on the first floor can be seen in photograph 2. The slope to access the mobile shelving on the second floor can be seen in photograph 3. The mobile shelving is manually operated. As can be seen in photograph 4.
- There are doors in corridors which have to be opened manually.

Getting Around

[View](#)

- There is clear signage for building facilities/areas in the foyer/reception area.
- There is clearly written and pictorial directional signage at key points of circulation routes.
- There is good colour contrast between the walls and floor in all areas.
- The lighting levels are good.
- This building does not play background music.
- There is not a hearing assistance system.

Comments

[View](#)

- Photographs 5, 6, 7 and 8 show the Wolfson Conference Suite.
- Photograph 9 shows the corridor on the ground floor.
- Photographs 10, 11 and 12 show the third floor reading room.

Eating and Drinking (IHR Cafe)

Photos



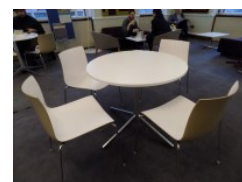
1



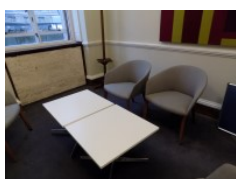
2



3



4



5



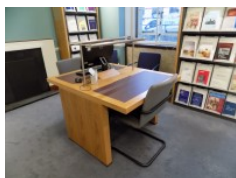
6



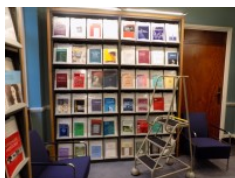
7



8



9



10

-
- The following information is for the café.
 - Full table service is not available.
 - Food or drinks are ordered from the service counter.
 - Food or drinks can be brought to the table.
 - Some tables are permanently fixed.
 - All chairs are permanently fixed.
 - Some chairs have armrests.
 - The nearest table is 30m (32yd 2ft) from the north block entrance.
 - The distance between the floor and the lowest table is 40cm (1ft 4in).
 - The distance between the floor and the highest table is 94cm (3ft 1in).
 - The standard height for tables is 72cm.
 - There is ample room for a wheelchair user to manoeuvre.
 - Plastic / takeaway cups are available.
 - Plastic / takeaway cutlery is available.
 - Drinking straws are not available.
 - Menus are hand held only.
 - Menus are not available in Braille.
 - Menus are not available in large print.
 - Picture menus are not available.
 - Menus are clearly written.
 - Menus are presented in contrasting colours.
 - The type of food served here is snacks.

Comments

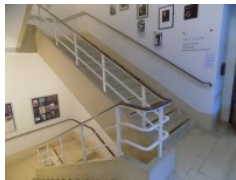
View

- Accessed from within the café is the IHR Friends Periodicals Room.
- This is accessed by a light single door with a width of 90cm.
- Some periodicals are high up and may require steps to access.
- The periodicals room can be seen in photographs 7, 8, 9 and 10.

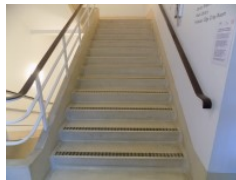
Other Floors



Photos



1



2

Steps

View

- The floors which are accessible by stairs are B, G, 1, 2, 3, 4, 5 and 6.
- The stairs are located North Block Entrance.
- The stairs are approximately 8m from the North Block Entrance.
- There are 15+ steps between floors.
- The lighting levels are bright.
- The steps are clearly marked.
- The steps are deep (18cm+).
- The steps do have handrails.
- The steps have a handrail on both sides.
- There is a landing.

Lift



Photos



1



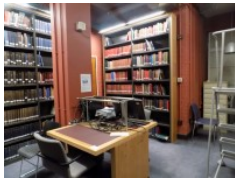
2

-
- There is a lift for public use.
 - The lift is located in front of you on entrance.
 - The lift is a standard lift.
 - The floors which are accessible by this lift are B, G, 1, 2, 3, 4, 5 and 6.
 - Wall mounted information boards are not provided at lift landings.
 - The weight limit for the lift is 1200kg.
 - The lift is approximately 6m (6yd 1ft) from the entrance.
 - Staff do not need to be notified for use of the lift.
 - The clear door width is 90cm (2ft 11in).
 - The dimensions of the lift are 163cm x 158cm (5ft 4in x 5ft 2in).
 - There are not separate entry and exit doors in the lift.
 - There is not a mirror to aid reversing out of the lift.
 - The lift does have a visual floor indicator.
 - The lift does have an audible announcer.
 - The lift does not have a hearing loop system.
 - The lift does not have Braille markings.
 - The lift does have tactile markings.
 - The controls for the lift are within 90cm - 120cm from the floor.
 - The lighting level in the lift is bright.

Library (Wohl Library)



Photos



1



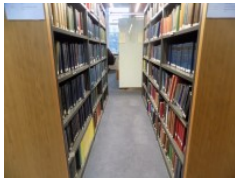
2



3



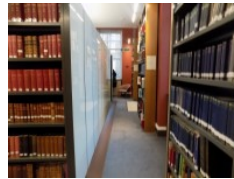
4



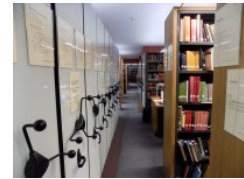
5



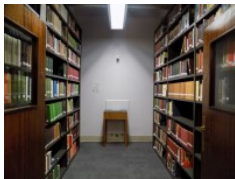
6



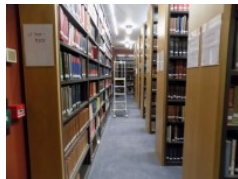
7



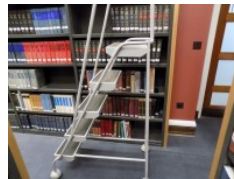
8



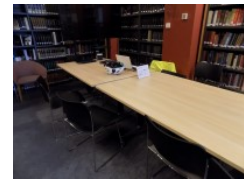
9



10



11



12

-
- This library does not have a regular supply of books in Braille.
 - This library does not have a regular supply of books in large print.
 - This library does not have a regular supply of books in audio format.
 - There is not an ordering service.
 - The library does not have computers with accessible software.
 - Auxiliary aids are available for computer users.
 - A height adjustable chair is / are available.

Comments

[View](#)

- The Wohl Library has areas located on the basement floor (photographs 1, 2, 3 and 4) the first floor (photographs 5, 6, 7 and 8) and second floor (photographs 9, 10, 11 and 12).
- There is a library enquiries office on the first floor area.
- The height adjustable chairs are not available on all floors.

Accessible Toilet (Lower Ground Floor)



Photos



1



2

-
- Accessible toilet facilities are available.

Location and Access

View

- The toilet is not for the sole use of disabled people.
- There is pictorial signage on or near the toilet door.
- This accessible toilet is approximately 10m (10yd 2ft) from the lift.
- This accessible toilet is located just inside the Wolfson Conference Centre.
- There is level access to this accessible toilet.

Features and Dimensions

View

- This is a shared toilet.
- A key is not required for the accessible toilet.
- The door opens outwards.
- The door is locked by a twist lock.
- The width of the accessible toilet door is 90cm (2ft 11in).
- The door is heavy.
- The dimensions of the accessible toilet are 145cm x 230cm (4ft 9in x 7ft 7in).
- There is not a clear 150cm x 150cm manoeuvring space in the accessible toilet.
- There is a lateral transfer space.
- As you face the toilet pan the transfer space is on the right.
- The lateral transfer space is 87cm (2ft 10in).
- There is a dropdown rail on the transfer side.

- There is no flush.
- The tap type is lever.
- There is a mixer tap.
- There is an emergency pull cord alarm in the cubicle.
- The emergency pull cord alarm is fully functional.
- Disposal facilities are available in the cubicle.
- There is a/are female sanitary and open waste paper bin disposal units.
- There is a/are coat hook(s).
- The height of the coat hook is 127cm from the floor.

Position of Fixtures

View

- Wall mounted grab rails are available for the toilet.
- As you face the toilet the wall-mounted grab rails are on both sides.
- There is not a shelf within the accessible toilet.
- There is a mirror.
- Mirrors are not placed at a lower level or at an angle for ease of use.
- The height of the toilet seat above floor level is 48cm (1ft 7in).
- There is a hand dryer.
- The hand dryer cannot be reached from seated on the toilet.
- The hand dryer is not placed higher than 100cm (3ft 3in).
- There is a towel dispenser.
- The towel dispenser cannot be reached from seated on the toilet.
- The towel dispenser is placed higher than 100cm (3ft 3in).
- The height of the towel dispenser is 110cm (3ft 7in).
- There is a toilet roll holder.
- The toilet roll holder can be reached from seated on the toilet.
- The toilet roll holder is not placed higher than 100cm (3ft 3in).
- There is a wash basin.

- The wash basin can be reached from seated on the toilet.
- The wash basin is not placed higher than 74cm (2ft 5in).
- There is a soap dispenser.
- The soap dispenser cannot be reached from seated on the toilet.
- The height of the soap dispenser is 108cm.

Colour Contrast and Lighting

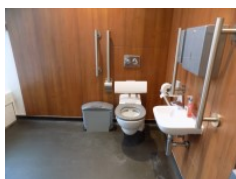
[View](#)

- The contrast between the internal door and wall is good.
- The contrast between the external door and wall is good.
- The contrast between the wall-mounted grab rail(s) and wall is good.
- The contrast between the dropdown rail(s) and wall is good.
- The toilet seat colour contrast is good.
- The contrast between the walls and floor is good.
- The lighting levels are bright.

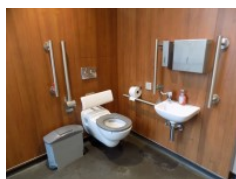
Accessible Toilet (First Floor)



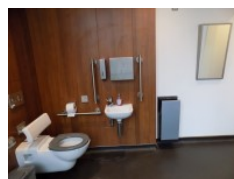
Photos



1



2



3

-
- Accessible toilet facilities are available.

Location and Access

[View](#)

- The toilet is not for the sole use of disabled people.
- There is pictorial signage on or near the toilet door.
- This accessible toilet is approximately 2m (2yd 7in) from the lift.

- This accessible toilet is located in front of you on exiting the lift on the first floor.
- There is level access to this accessible toilet.

Features and Dimensions

View

- This is a shared toilet.
- A key is not required for the accessible toilet.
- The door opens outwards.
- The door is locked by a twist lock.
- The width of the accessible toilet door is 90cm (2ft 11in).
- The door is heavy.
- The dimensions of the accessible toilet are 250cm x 270cm (8ft 2in x 8ft 10in).
- There is a clear 150cm x 150cm manoeuvring space in the accessible toilet.
- There is a lateral transfer space.
- As you face the toilet pan the transfer space is on the left.
- The lateral transfer space is 170cm (5ft 7in).
- There is a dropdown rail on the transfer side.
- There is a flush, however it is not on the transfer side.
- The tap type is lever.
- There is a mixer tap.
- There is an emergency pull cord alarm in the cubicle.
- The emergency pull cord alarm is fully functional.
- Disposal facilities are available in the cubicle.
- There is a/are female sanitary and open waste paper bin disposal units.
- There is a/are coat hook(s).
- The height of the coat hook is 127cm from the floor.

Position of Fixtures

View

- Wall mounted grab rails are available for the toilet.
- As you face the toilet the wall-mounted grab rails are on both sides.
- There is not a shelf within the accessible toilet.
- There is a mirror.
- Mirrors are not placed at a lower level or at an angle for ease of use.
- The height of the toilet seat above floor level is 49cm (1ft 7in).
- There is a hand dryer.
- The hand dryer cannot be reached from seated on the toilet.
- The hand dryer is not placed higher than 100cm (3ft 3in).
- There is a towel dispenser.
- The towel dispenser cannot be reached from seated on the toilet.
- The towel dispenser is placed higher than 100cm (3ft 3in).
- The height of the towel dispenser is 110cm (3ft 7in).
- There is a toilet roll holder.
- The toilet roll holder can be reached from seated on the toilet.
- The toilet roll holder is not placed higher than 100cm (3ft 3in).
- There is a wash basin.
- The wash basin can be reached from seated on the toilet.
- The wash basin is not placed higher than 74cm (2ft 5in).
- There is a soap dispenser.
- The soap dispenser cannot be reached from seated on the toilet.
- The height of the soap dispenser is 110cm.

Colour Contrast and Lighting

View

- The contrast between the internal door and wall is good.
- The contrast between the external door and wall is good.
- The contrast between the wall-mounted grab rail(s) and wall is good.

- The contrast between the dropdown rail(s) and wall is good.
- The toilet seat colour contrast is good.
- The contrast between the walls and floor is good.
- The lighting levels are bright.

Standard Toilet(s)

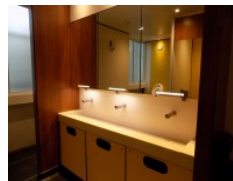
Photos



1



2



3

Location of Standard Toilet(s)

[View](#)

- There are male and female standard toilets facilities on the basement floor, the second floor and the third floor.

Standard Toilet Surveyed

[View](#)

- A male standard toilet was surveyed.
- The toilet surveyed is located just inside the Wolfson Conference Centre.
- There is a female standard toilet in the same location.
- The standard toilet surveyed is approximately 15m from the lift.
- There is a/are cubicle(s) suitable for ambulant disabled people in the standard toilet(s) surveyed.
- There are horizontal grab rails on both sides of the seat.
- Lighting levels in the standard toilet surveyed are good.