



AccessAble
Your Accessibility Guide

The new name for DisabledGo

Student Central

The University of London, Malet Street, London, WC1E 7HY

Visit website (<https://london.ac.uk/>)



Access Guide

Introduction

- Services / facilities within the building include teaching rooms, gym, swimming pool, cafes, conference spaces for hire, gym, swimming pool, fitness classes, cafes, bars and organized entertainment.

Getting Here

By Road

[View](#)

- The SOAS University of London campus is located in the centre of London in Bloomsbury in the Borough of Camden. The building is located south of the A501 between the A4200 and A400.
- There is NCP parking nearby, approx. 5 mins away.

By Bus

[View](#)

- Buses listed below are the numbers which are nearest to the building. Gower Street: 10, 24, 29, 73, 134, 390 Euston Road: 18, 30, 91, 205, 253, 476 Woburn Place/Southampton Row: 59, 68, 91, 168, 188.

By Train

[View](#)

- The nearest train station is London Euston. This station is served by the Caledonian Sleeper, Overground, Virgin Trains and West Midland Trains services.

By Underground

[View](#)

- The nearest underground is Goodge Street which is served by the Northern Line.

Useful Links

[View](#)

- For more information on bus and underground stations, services and ticketing in and around London.
- [To view the web page described above click here \(opens in new tab\) \(https://tfl.gov.uk\)](https://tfl.gov.uk).
- For more information on national train timetables, services and ticketing.
- [To view the web page described above click here \(opens in new tab\) \(http://www.nationalrail.co.uk/\)](http://www.nationalrail.co.uk/).

Useful Information

- [To see more information on Student Advice Centre please click here \(opens new tab\) \(https://london.ac.uk/ways-study/study-campus-london/student-services-and-support\)](https://london.ac.uk/ways-study/study-campus-london/student-services-and-support).
- Telephone Number: +44 (0)20 7862 8360.
- Offices for the Student Advice Centre are located in Senate House and Stewart House.

- [To see more information on Housing Services please click here \(opens new tab\)](https://housing.london.ac.uk/) (<https://housing.london.ac.uk/>).
- Telephone Number: +44 (0)20 7862 8880.
- Email: housing@london.ac.uk.

Building Parking

- The building does not have its own dedicated parking.

Public Car Parks

[View](#)

- There is not a car park for public use within 200m (approx).

Drop Off Point

[View](#)

- There is not a designated drop off point.

Outside Access (Main Entrance)

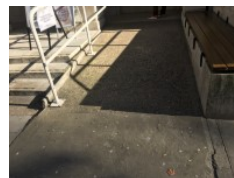
Photos



1



2



3

Entrance

[View](#)

- This information is for the entrance located at the front of the building.
- There is ramped/sloped or stepped access at this entrance.
- There is not a bell/buzzer.
- There is not an intercom.

- There is a canopy or recess which provides weather protection at this entrance.
- The main door(s) open(s) away from you (push).
- The door(s) is / are single.
- The door(s) is / are heavy.
- The width of the door opening is 100cm (3ft 3in).

Ramp/Slope

View

- There is a ramp/slope at this entrance.
- The ramp/slope is located to the right as you face the entrance.
- The ramp or slope does bypass the step(s).
- The ramp/slope gradient is steep.
- The ramp is permanent.
- There is not a level landing at the top of the ramp.
- The ramp does have handrails.
- The handrails are on the left going up the ramp.

Step(s)

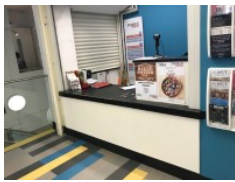
View

- There is a / are step(s) at this entrance.
- The step(s) is / are located in front of the entrance.
- There is / are 3 step(s) to access the entrance.
- There is not tactile paving at the top and bottom of the step(s).
- The step(s) is / are clearly marked.
- The step(s) is / are medium height (11cm - 17cm).
- The steps do not have handrails.

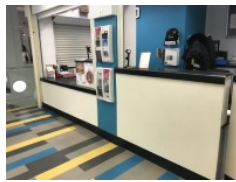
Reception (Student Central Reception)



Photos



1

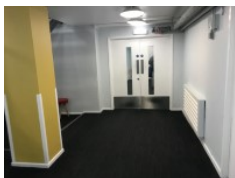


2

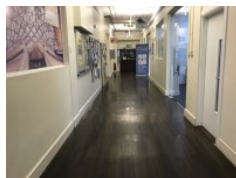
-
- Student Central Reception is located ahead of the main entrance.
 - The desk is 10m (10yd 2ft) from the main entrance.
 - The reception area is clearly visible from the entrance.
 - There is step free access to this reception area.
 - The lighting levels in the reception area are medium.
 - The reception desk/counter is high (110cm+).
 - There is not a low section of the counter (76cm or below) available.
 - The desk is staffed.
 - There is not a hearing assistance system.

Getting Around

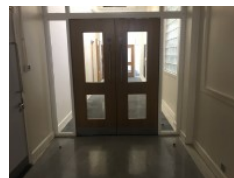
Photos



1



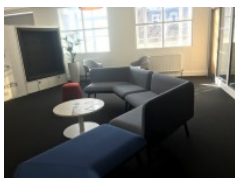
2



3



4



5



6

Access

View

- There is step free access throughout the building via lift(s).
- There are doors in corridors which have to be opened manually.

Getting Around

[View](#)

- There is clear signage for building facilities/areas in the foyer/reception area.
- There is clearly written and pictorial directional signage at key points of circulation routes.
- There is good colour contrast between the walls and floor in all areas.
- The lighting levels are good.
- This building does not play background music.
- There is not a hearing assistance system.

Eating and Drinking (Grumpy Mule)



Photos



1



2



3

-
- The following information is for the café.
 - Full table service is not available.
 - Food or drinks are ordered from the service counter.
 - Some tables are permanently fixed.
 - No chairs are permanently fixed.
 - Some chairs have armrests.
 - The nearest table is 5m (5yd 1ft) from the main entrance.
 - The distance between the floor and the lowest table is 50cm (1ft 8in).
 - The distance between the floor and the highest table is 103cm (3ft 5in).
 - The standard height for tables is 103cm.
 - There is ample room for a wheelchair user to manoeuvre.

- Plastic / takeaway cups are available.
- Plastic / takeaway cutlery is not available.
- Drinking straws are not available.
- Menus are wall only.
- Menus are not available in Braille.
- Menus are not available in large print.
- Picture menus are not available.
- Menus are clearly written.
- Menus are presented in contrasting colours.
- The type of food served here is hot and cold snacks.

Comments

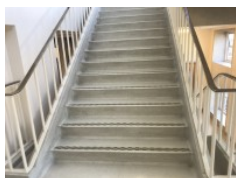
[View](#)

- External Food or drinks cannot be brought to the café.

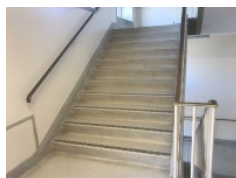
Other Floors (Central Staircase)



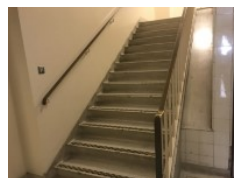
Photos



1



2



3

Steps

[View](#)

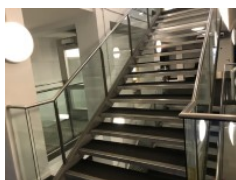
- The floors which are accessible by stairs are G, 1, 2, 3 and 4.
- The stairs are located ahead of the main entrance.
- The stairs are approximately 14m from the main entrance.
- There are 15+ steps between floors.
- The lighting levels are medium.
- The steps are clearly marked.

- The steps are medium height (11cm - 17cm).
- The steps do have handrails.
- The steps have a handrail on both sides.
- There is a landing.
- There are a staircases with identical features to the rear left and right of the building. The rear right staircase gives you access to Room 211, M202-204 and offices 313- 316. This can be seen in photograph 3.

Other Floors



Photos



1

Steps

View

- The floors which are accessible by stairs are B, LG and G.
- The stairs are located ahead of the main entrance.
- The stairs are approximately 6m from the main entrance.
- There are 15+ steps between floors.
- The lighting levels are medium.
- The steps are clearly marked.
- The steps are medium height (11cm - 17cm).
- The steps do have handrails.
- The steps have a handrail on both sides.
- There is a landing.

Lift (Central)



Photos



1



2

-
- There is a lift for public use.
 - The lift is located ahead and to the left of the main entrance.
 - The lift is a standard lift.
 - The floors which are accessible by this lift are LG, G, 1, 2, 3 and 4.
 - Wall mounted information boards are provided at lift landings.
 - The weight limit for the lift is 1250kg.
 - The lift is approximately 12m (13yd 4in) from the main entrance.
 - Staff do not need to be notified for use of the lift.
 - The clear door width is 102cm (3ft 4in).
 - The dimensions of the lift are 197cm x 120cm (6ft 6in x 3ft 11in).
 - There are not separate entry and exit doors in the lift.
 - There is not a mirror to aid reversing out of the lift.
 - The lift does have a visual floor indicator.
 - The lift does have an audible announcer.
 - The lift does not have a hearing loop system.
 - The lift does have Braille markings.
 - The lift does have tactile markings.
 - The controls for the lift are within 90cm - 120cm from the floor.
 - The lighting level in the lift is medium.

Lift (Rear Right Lift)



Photos



1



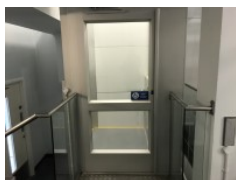
2

-
- There is a lift for public use.
 - The lift is located to the rear right of the building.
 - The lift is a standard lift.
 - The floors which are accessible by this lift are G, 1, 2, 3 and 4.
 - Wall mounted information boards are not provided at lift landings.
 - The weight limit for the lift is 630kg.
 - The lift is approximately 52m (56yd 2ft) from the main entrance.
 - Staff do not need to be notified for use of the lift.
 - The clear door width is 109cm (3ft 7in).
 - The dimensions of the lift are 120cm x 125cm (3ft 11in x 4ft 1in).
 - There are not separate entry and exit doors in the lift.
 - There is not a mirror to aid reversing out of the lift.
 - The lift does have a visual floor indicator.
 - The lift does not have an audible announcer.
 - The lift does not have a hearing loop system.
 - The lift does not have Braille markings.
 - The lift does have tactile markings.
 - The controls for the lift are within 90cm - 120cm from the floor.
 - The lighting level in the lift is medium.

Lift (Platform)



Photos



1



2

-
- There is a lift for public use.
 - The lift is located opposite the gym reception.
 - The lift is a platform lift.
 - The floors which are accessible by this lift are the large exercise room, Lower Basement and B.
 - Wall mounted information boards are not provided at lift landings.
 - The weight limit for the lift is 350kg.
 - The lift is approximately 17m (18yd 1ft) from the gym entrance.
 - Staff do not need to be notified for use of the lift.
 - The clear door width is 90cm (2ft 11in).
 - The dimensions of the lift are 108cm x 146cm (3ft 7in x 4ft 9in).
 - There are not separate entry and exit doors in the lift.
 - There is not a mirror to aid reversing out of the lift.
 - The lift does have a visual floor indicator.
 - The lift does not have an audible announcer.
 - The lift does not have a hearing enhancement system.
 - The lift does not have Braille markings.
 - The lift does not have tactile markings.
 - The controls for the lift are within 90cm - 120cm from the floor.
 - The lighting level in the lift is medium.

Lift (Changing Room to Swimming Pool)



Photos



1



2

- There is a lift for public use.
- The lift is located to the rear of the male changing room leading to the swimming pool.
- The lift is a platform lift.
- The floors which are accessible by this lift are changing room to swimming pool.
- Wall mounted information boards are not provided at lift landings.
- The weight limit for the lift is 225kg.
- The lift is approximately 4m (4yd 1ft) from the swimming pool.
- Staff do need to be notified for use of the lift.
- The clear door width is 80cm (2ft 7in).
- The dimensions of the lift are 80cm x 89cm (2ft 7in x 2ft 11in).
- There are separate entry and exit doors in the lift.
- There is not a mirror to aid reversing out of the lift.
- The lift does not have a visual floor indicator.
- The lift does not have an audible announcer.
- The lighting level in the lift is medium.

Comments

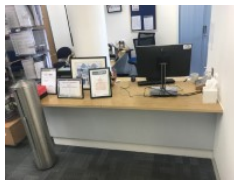
[View](#)

- The lift is controlled by a member of staff.

Reception (UCL Careers)



Photos



1

-
- UCL Careers is located to the right after you exit the central lift on the fourth floor.
 - The desk is 5m (5yd 1ft) from the central lift.
 - The reception area is clearly visible from the entrance.
 - There is step free access to this reception area, via lift.
 - The lighting levels in the reception area are medium.
 - The reception desk/counter is low (76cm or lower).
 - There is a clear knee recess beneath the low/lowered counter.
 - The desk is staffed.
 - There is not a hearing assistance system.

Reception (Gym Reception)



Photos



1

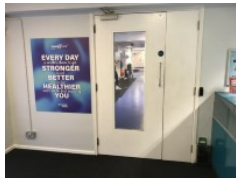
-
- Gym reception is located on the lower ground floor.
 - The desk is 4m (4yd 1ft) from the central lift.
 - The reception area is clearly visible from the entrance.
 - There is step free access to this reception area, via lift.
 - The lighting levels in the reception area are medium.
 - The reception desk/counter is high (110cm+).
 - There is not a low section of the counter (76cm or below) available.

- The desk is staffed.
- There is not a hearing assistance system.

Fitness Suite (Gym)



Photos



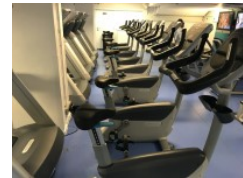
1



2



3



4



5



6

Access to Fitness Suite

[View](#)

- The fitness suite is located on the lower ground floor.
- The fitness suite is 10m (10yd 2ft) from the lift.
- There is step free access to the fitness suite.
- There are doors into the fitness suite.
- The doors open towards you (pull).
- The doors are single.
- The doors are heavy.
- The opening is 89cm (2ft 11in) wide.

Fitness Suite (General)

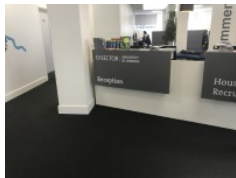
[View](#)

- Staff receive no training in assisting disabled people.
- A portable hearing loop is not available for induction.
- There is clear manoeuvring space between equipment.
- There is level access to all of the equipment.

Reception (Housing Services and Recruitment Services)



Photos



1

-
- Housing Services and Recruitment Services is located to the left side of the venue on the fourth floor.
 - The desk is 17m (18yd 1ft) from the central lift.
 - Clear signage for the reception area is visible from the entrance.
 - There is step free access to this reception area, via lift.
 - The lighting levels in the reception area are medium.
 - The reception desk/counter is high (110cm+).
 - There is not a low section of the counter (76cm or below) available.
 - The desk is staffed.
 - The bell is at a suitable height for a wheelchair user.
 - There is not a hearing assistance system.

Level Change (Changing Room to Swimming Pool)



Photos



1

- There is a/are step(s) to access this area/service.
- The step(s) is/are located to the rear of the changing room leading to the pool.
- There is/are 3 step(s) to the area/service.
- The lighting levels at the step(s) are medium.
- There is not tactile paving at the top and bottom of the steps.
- The step(s) is/are clearly marked.
- The step(s) is/are medium height (11cm - 17cm).
- There is a/are handrail(s) at the step(s).
- The handrail(s) is/are on the right going up the step(s).
- There is a lift to access this area/service.
- The lift does bypass the step(s).

Level Change (First Floor Accessible Toilet)

Photos



1

-
- There is a ramp/slope to access this area/service.
 - The ramp/slope is located in front of the entrance.
 - The ramp/slope is slight.
 - The ramp/slope is permanent.
 - There is not a level landing at the top of the ramp/slope.
 - The ramp does not have handrails.

Standard Changing Room (Male)

Photos



1



2



3



4



5

- There is a/are standard changing room(s) available.
- The standard changing room(s) surveyed is/are located on the basement level.
- The standard changing room(s) is/are approximately 23m (25yd 6in) from the platform lift.
- The standard changing room(s) is/are approximately 33m (36yd 3in) from the reception desk.
- The standard changing room(s) is/are approximately 12m (13yd 4in) from the swimming pool.
- There is level access to the standard changing room(s).

Comments

[View](#)

- The female changing room is 42m from the platform lift.

Swimming Pool

Photos



1



2

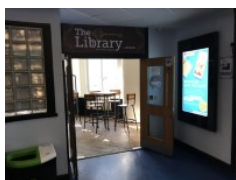


3

- There is level access from the changing area to the swimming pool.
- There is not a ramped entrance into the water.
- There is not a wet side chair available.
- There is a hoist for wheelchair users to access the water.
- The hoist is manual.
- There are not steps into the swimming pool.
- There is a ladder type entrance into the water.
- There is a handrail on both sides of the ladder.

Eating and Drinking (The Library Bar)

Photos



1



2



3

-
- The following information is for the bar.
 - Full table service is not available.
 - Some tables are permanently fixed.
 - Some chairs are permanently fixed.
 - Some chairs have armrests.
 - The nearest table is 14m (15yd 11in) from the central lift.
 - The distance between the floor and the lowest table is 76cm (2ft 6in).
 - The distance between the floor and the highest table is 110cm (3ft 7in).
 - The standard height for tables is 76cm.
 - There is ample room for a wheelchair user to manoeuvre.
 - Plastic / takeaway cups are not available.
 - Drinking straws are available.
 - Menus are wall only.

- Menus are not available in Braille.
- Menus are not available in large print.
- Picture menus are not available.
- Menus are clearly written.
- Menus are presented in contrasting colours.

Eating and Drinking (The Gallery)



Photos



1



2



3



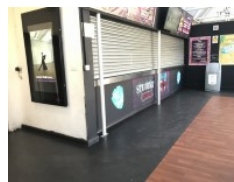
4



5



6



7

-
- The following information is for the bar.
 - Full table service is not available.
 - No tables are permanently fixed.
 - No chairs are permanently fixed.
 - Some chairs have armrests.
 - The nearest table is 14m (15yd 11in) from the central lift.
 - The distance between the floor and the lowest table is 69cm (2ft 3in).
 - The distance between the floor and the highest table is 70cm (2ft 4in).
 - The standard height for tables is 70cm.
 - There is ample room for a wheelchair user to manoeuvre.
 - Plastic / takeaway cups are not available.
 - Drinking straws are available.

- Menus are wall only.
- Menus are not available in Braille.
- Menus are not available in large print.
- Picture menus are not available.
- Menus are clearly written.
- Menus are presented in contrasting colours.

Accessible Toilet (Ground Floor)



Photos



1

-
- Accessible toilet facilities are available.

Location and Access

[View](#)

- There is pictorial signage on or near the toilet door.
- This accessible toilet is approximately 40m (43yd 2ft) from the main entrance.
- This accessible toilet is located to the far left of the building.
- There is level access to this accessible toilet.

Features and Dimensions

[View](#)

- This is a shared toilet.
- A key is required for the accessible toilet.
- The key is a radar key.
- The key can be obtained from reception.
- The door opens outwards.
- The width of the accessible toilet door is 86cm (2ft 10in).

- The door is heavy.
- The dimensions of the accessible toilet are 140cm x 230cm (4ft 7in x 7ft 7in).
- There is not a clear 150cm x 150cm manoeuvring space in the accessible toilet.
- There is a lateral transfer space.
- As you face the toilet pan the transfer space is on the left.
- The lateral transfer space is 69cm (2ft 3in).
- There is a dropdown rail on the transfer side.
- There is a flush on the transfer side.
- The tap type is lever.
- There is a mixer tap.
- There is an emergency pull cord alarm in the cubicle.
- The emergency pull cord alarm is not fully functional.
- The alarm was out of reach (higher than 10cm (4") from floor) when surveyed.
- Disposal facilities are available in the cubicle.
- There is a/are female sanitary and open waste paper bin disposal units.
- There is not a/are not coat hook(s).

Position of Fixtures

View

- Wall mounted grab rails are available for the toilet.
- As you face the toilet the wall-mounted grab rails are on both sides.
- There is not a shelf within the accessible toilet.
- There is a mirror.
- Mirrors are placed at a lower level or at an angle for ease of use.
- The height of the toilet seat above floor level is 47cm (1ft 7in).
- There is a hand dryer.
- The hand dryer cannot be reached from seated on the toilet.

- The hand dryer is not placed higher than 100cm (3ft 3in).
- There is not a towel dispenser.
- There is a toilet roll holder.
- The toilet roll holder can be reached from seated on the toilet.
- There is a wash basin.
- The wash basin can be reached from seated on the toilet.
- The wash basin is not placed higher than 74cm (2ft 5in).
- There is a soap dispenser.
- The soap dispenser cannot be reached from seated on the toilet.
- The height of the soap dispenser is 110cm.

Colour Contrast and Lighting

[View](#)

- The contrast between the internal door and wall is poor.
- The contrast between the external door and wall is poor.
- The contrast between the wall-mounted grab rail(s) and wall is fair.
- The contrast between the dropdown rail(s) and wall is fair.
- The toilet seat colour contrast is poor.
- The contrast between the walls and floor is good.
- The lighting levels are poor.

Comments

[View](#)

- There is an internal catch to secure the toilet door.

Accessible Toilet (First Floor)



Photos



1



2

- Accessible toilet facilities are available.

Location and Access

View

- The toilet is not for the sole use of disabled people.
- There is pictorial signage on or near the toilet door.
- This accessible toilet is approximately 9m (9yd 2ft) from the central lift.
- This accessible toilet is located to the left of the gallery.
- There is not level access to this accessible toilet.

Features and Dimensions

View

- This is a shared toilet.
- A key is not required for the accessible toilet.
- The door opens outwards.
- The door is locked by a twist lock.
- The width of the accessible toilet door is 95cm (3ft 1in).
- The door is heavy.
- The dimensions of the accessible toilet are 196cm x 192cm (6ft 5in x 6ft 4in).
- There is not a clear 150cm x 150cm manoeuvring space in the accessible toilet.
- There is a lateral transfer space.
- As you face the toilet pan the transfer space is on the right.
- The lateral transfer space is 112cm (3ft 8in).
- There is a dropdown rail on the transfer side.
- There is a flush on the transfer side.

- The tap type is lever.
- There is a mixer tap.
- There is not an emergency pull cord alarm in the cubicle.
- Disposal facilities are available in the cubicle.
- There is a/are female sanitary and open waste paper bin disposal units.
- There is not a/are not coat hook(s).

Position of Fixtures

View

- Wall mounted grab rails are available for the toilet.
- As you face the toilet the wall-mounted grab rails are on both sides.
- There is not a shelf within the accessible toilet.
- There is not a mirror.
- The height of the toilet seat above floor level is 48cm (1ft 7in).
- There is a hand dryer.
- The hand dryer cannot be reached from seated on the toilet.
- The hand dryer is not placed higher than 100cm (3ft 3in).
- There is not a towel dispenser.
- There is a toilet roll holder.
- The toilet roll holder can be reached from seated on the toilet.
- The toilet roll holder is placed higher than 100cm (3ft 3in).
- The height of the toilet roll holder is 110cm (3ft 7in).
- There is a wash basin.
- The wash basin can be reached from seated on the toilet.
- The wash basin is not placed higher than 74cm (2ft 5in).
- There is a soap dispenser.
- The soap dispenser can be reached from seated on the toilet.
- The height of the soap dispenser is 110cm.

Colour Contrast and Lighting

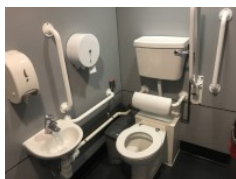
[View](#)

- The contrast between the internal door and wall is good.
- The contrast between the external door and wall is good.
- The contrast between the wall-mounted grab rail(s) and wall is poor.
- The contrast between the dropdown rail(s) and wall is poor.
- The toilet seat colour contrast is poor.
- The contrast between the walls and floor is good.
- The lighting levels are medium.

Accessible Toilet (Second Floor)



Photos



1



2

-
- Accessible toilet facilities are available.

Location and Access

[View](#)

- The toilet is not for the sole use of disabled people.
- There is pictorial signage on or near the toilet door.
- This accessible toilet is approximately 24m (26yd 9in) from the central lift.
- This accessible toilet is located to the left along to the corridor as you exit the lift.
- There is level access to this accessible toilet.
- This is by lift.

Features and Dimensions

[View](#)

- This is a shared toilet.
- A key is not required for the accessible toilet.
- The door opens outwards.
- The door is locked by a lever twist.
- The width of the accessible toilet door is 82cm (2ft 8in).
- The door is heavy.
- The dimensions of the accessible toilet are 153cm x 240cm (5ft x 7ft 10in).
- There is not a clear 150cm x 150cm manoeuvring space in the accessible toilet.
- There is a lateral transfer space.
- As you face the toilet pan the transfer space is on the right.
- The lateral transfer space is 84cm (2ft 9in).
- There is a dropdown rail on the transfer side.
- There is a flush on the transfer side.
- The tap type is lever.
- There is a mixer tap.
- There is not an emergency pull cord alarm in the cubicle.
- Disposal facilities are available in the cubicle.
- There is a/are female sanitary and open waste paper bin disposal units.
- There is not a/are not coat hook(s).

Position of Fixtures

[View](#)

- Wall mounted grab rails are available for the toilet.
- As you face the toilet the wall-mounted grab rails are on both sides.
- There is not a shelf within the accessible toilet.
- There is a mirror.

- Mirrors are placed at a lower level or at an angle for ease of use.
- The height of the toilet seat above floor level is 48cm (1ft 7in).
- There is a hand dryer.
- The hand dryer cannot be reached from seated on the toilet.
- The hand dryer is not placed higher than 100cm (3ft 3in).
- There is not a towel dispenser.
- There is a toilet roll holder.
- The toilet roll holder can be reached from seated on the toilet.
- The toilet roll holder is placed higher than 100cm (3ft 3in).
- The height of the toilet roll holder is 110cm (3ft 7in).
- There is a wash basin.
- The wash basin can be reached from seated on the toilet.
- The wash basin is not placed higher than 74cm (2ft 5in).
- There is a soap dispenser.
- The soap dispenser can be reached from seated on the toilet.
- The height of the soap dispenser is 110cm.

Colour Contrast and Lighting

[View](#)

- The contrast between the internal door and wall is poor.
- The contrast between the external door and wall is poor.
- The contrast between the wall-mounted grab rail(s) and wall is fair.
- The contrast between the dropdown rail(s) and wall is fair.
- The toilet seat colour contrast is poor.
- The contrast between the walls and floor is good.
- The lighting levels are medium.

Standard Toilet(s)



Photos



1



2



3



4



5

Location of Standard Toilet(s)

[View](#)

- There are male and female standard toilets facilities on the ground floor, the first floor, the second floor, the third floor and the fourth floor.

Standard Toilet Surveyed

[View](#)

- A male standard toilet was surveyed.
- The toilet surveyed is located to the far left of the building.
- There is a female standard toilet in the same location.
- There is step free access to the standard toilet(s) surveyed from the entrance.
- The standard toilet surveyed is approximately 52m from the main entrance.
- There is not a/are not cubicle(s) suitable for ambulant disabled people in the standard toilet(s) surveyed.