



UNIVERSITY  
OF LONDON

INSTITUTE  
IN PARIS

9



UNIVERSITY  
OF LONDON  
INSTITUTE  
IN PARIS

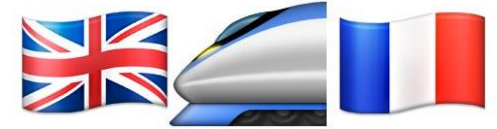
In partnership  
with  
your Quality  
Assured

Living in Paris - 2025





paris



life

moving

study

visas

support

housing

health

finance

france

admin



UNIVERSITY  
OF LONDON

INSTITUTE  
IN PARIS

[london.ac.uk/institute-paris](https://london.ac.uk/institute-paris)



# Housing - Overview



- Do some research on areas / arrondissements.
- Decide on your priorities (space, travel time, type of accommodation).
- Plan a budget to determine what rent you can afford.



- Studio flat in hall of residence (e.g. Nexity, Estudines)
- Individual private accommodation
- Flat sharing
- Living + working arrangements
- Room or studio at Cité internationale universitaire
- Private hostel for students



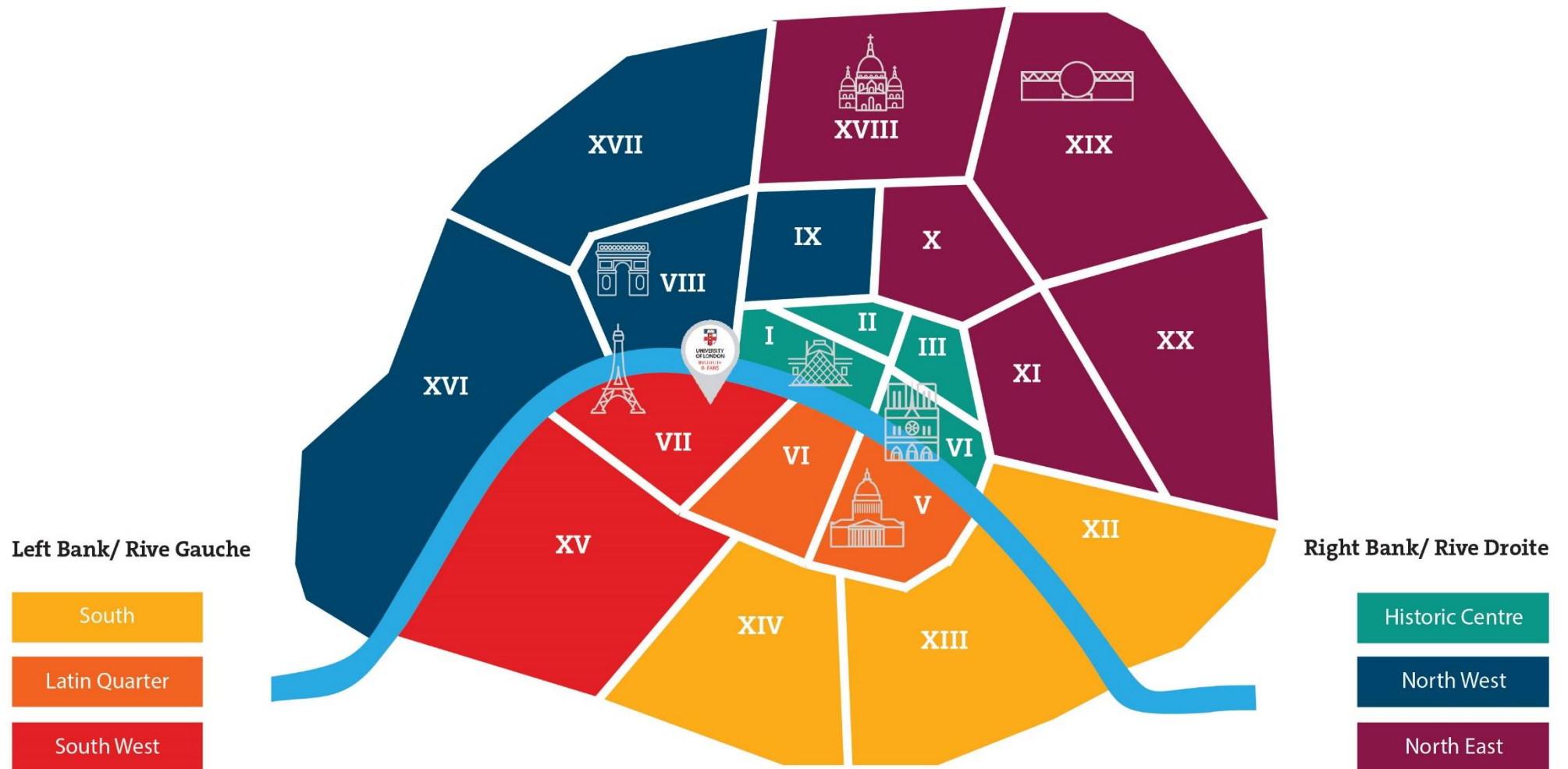
- Start planning early.
- Apply as soon as possible for halls, CIUP, or hostels.
- Plan to visit Paris to view flats.



- Contact current/prospective students on social media (e.g. Facebook group).
- Search online on housing websites and RATP to estimate travel time.
- Use notice board at ULIP and American Church.
- Stay in touch with Student Services team!



# Where to live?



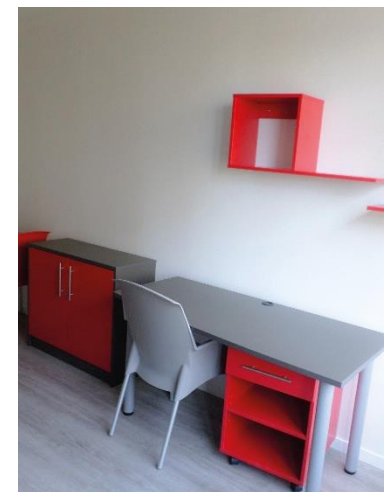
# Accommodation Options

Hall of Residence	Independent Housing	Flat Sharing	Living + Working Arrangements	Other
<ul style="list-style-type: none"> <li>• Compromise between independence and structured environment</li> <li>• Prices increase as you get nearer central Paris</li> <li>• Apply early</li> <li>• Price range: from €600-€1100/month</li> </ul>	<ul style="list-style-type: none"> <li>• Central locations</li> <li>• Good if you like being independent but can get lonely</li> <li>• Studio = self-contained with bathroom and kitchenette</li> <li>• Chambres de bonne = small independent rooms on the top floor, many have shared toilets and/or shower</li> <li>• Price range: from €600 - €1200/month</li> </ul>	<ul style="list-style-type: none"> <li>• Popular option among ULIPers</li> <li>• Generally cheaper than a private studio</li> <li>• Need to choose flatmates who share your lifestyle</li> <li>• Price range: from €650 - €950/month per person</li> </ul>	<ul style="list-style-type: none"> <li>• Opportunity to work in exchange for reduced rent</li> <li>• Great way to improve spoken French</li> <li>• Flats in good state of repair</li> <li>• Resources:</li> <li>• Price range: from free - €500/month</li> </ul>	<p>Cité Internationale Universitaire</p> <ul style="list-style-type: none"> <li>• Mostly PG students</li> <li>• Apply early</li> <li>• Price range: start at €700/month</li> </ul> <p>Private Hostel</p> <ul style="list-style-type: none"> <li>• Usually for women only</li> <li>• Strict house rules</li> <li>• Apply early, central location</li> <li>• Price range: from €500/month</li> </ul>



# Student Halls of Residence

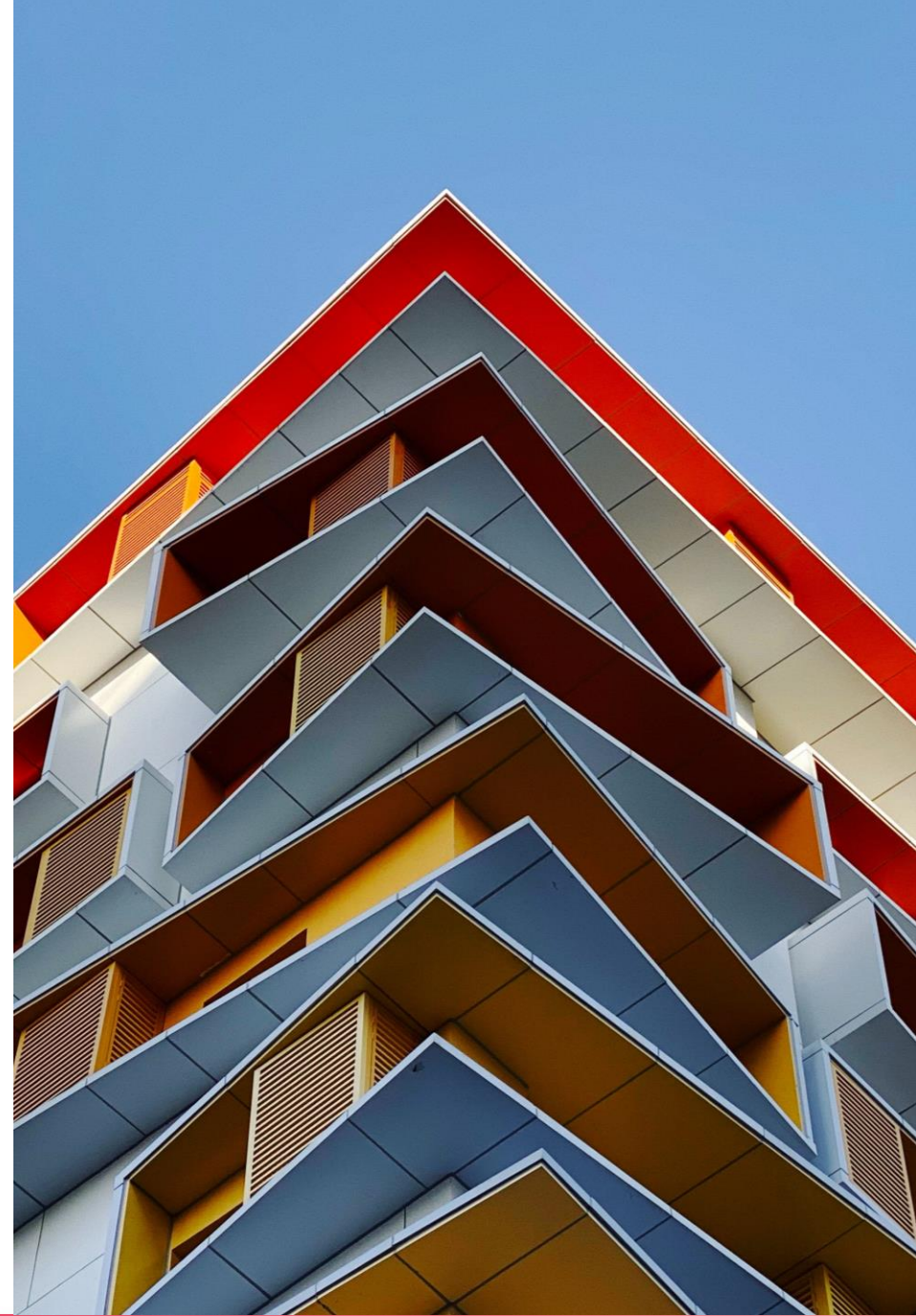
PROS	CONS
Advance booking	Cost
Bills included and well-equipped	Location





# Institute in Paris partnerships

- The Institute in Paris has a special arrangement with two private student halls:
  - Nexity Studea (since September 2018)
  - Estudines (since September 2022)
- Priority given to first year undergraduate students
- Currently **45** studio flats
- **Flats are fully-furnished** with a private bathroom and kitchen corner
- **Includes** all utilities and insurance
- **9-month** contracts directly with University of London

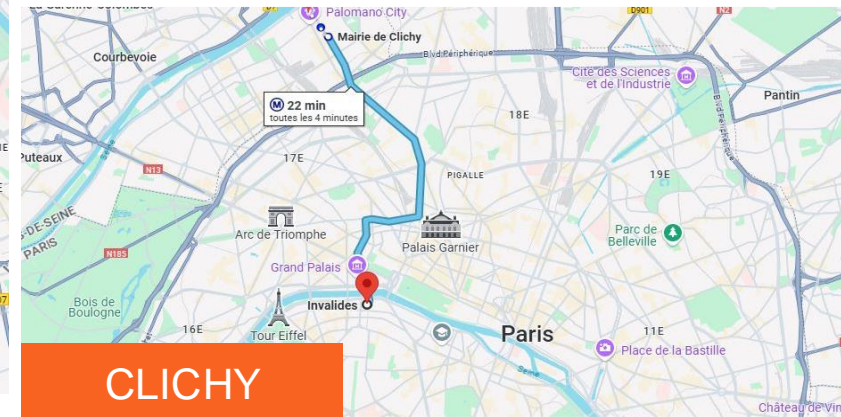
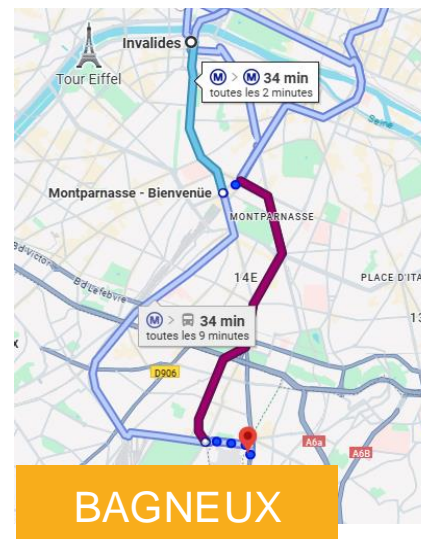


# Arrangement with Nexity Studéa

You can choose between **four locations**:

- **VIVALDI** (Paris 12th arrond.) - £825/£943
- **VANVES** (South of Paris) - £818
- **BAGNEUX** (South of Paris) - £805
- **CLICHY** (North of Paris) - £835

Flat sizes vary from 16 to 22 sqm.  
They are located from 25 to 35 minutes from ULIP via public transportation.





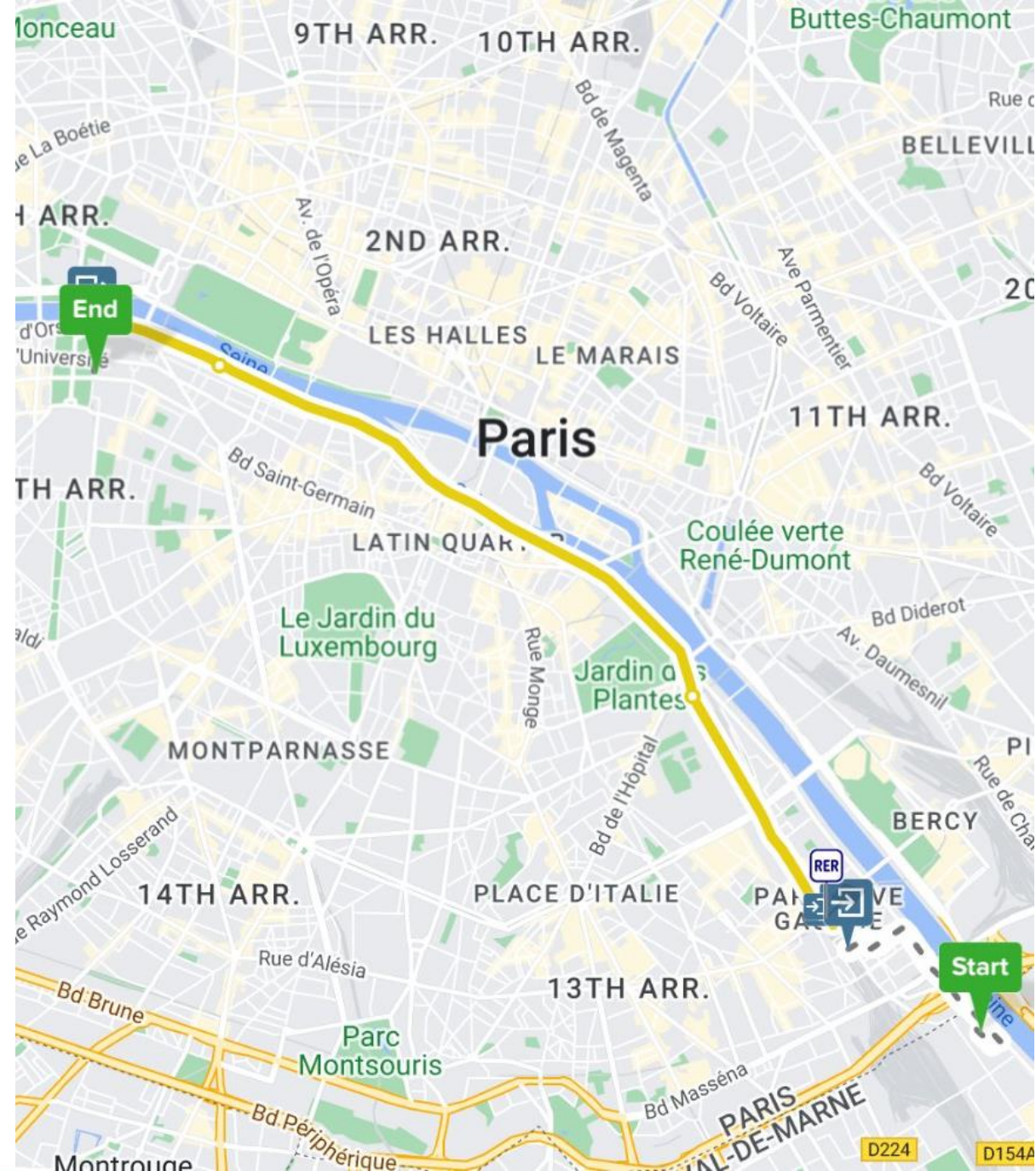
# Arrangement with Estudines

One location:

- Ivry (outskirts of Paris)

Located about  
35 minutes from ULIP

- Ivry: 19sqm at £830







# Independent Housing

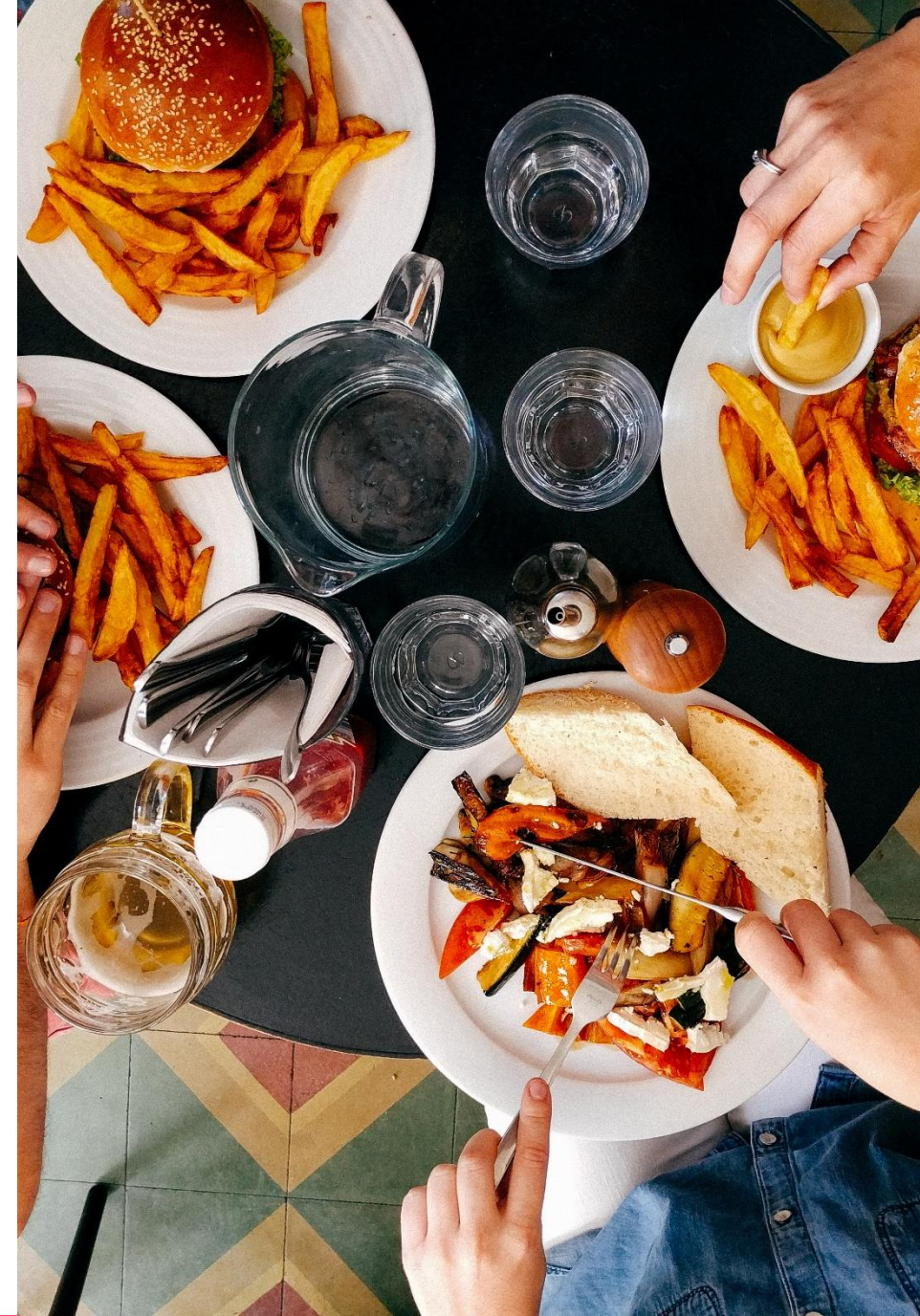
PROS	CONS
Wide price range	Small
Independence	Lonely
Location	





# Flat Sharing

PROS	CONS
Price	« Landlord problems »
Flat mates	Flat mates





# Living + Working Arrangements

PROS	CONS
Price	Working Hours
French environment	House rules



# IMPORTANT

- **DO** visit flats before committing yourself, or ask current student for advice (e.g. central paris rentals)
- **DO** make sure you understand the contract
- **DO** ask Student Services for advice
- **DON'T** make a payment to book a viewing/buy housing lists



# Monthly Budget

MONTHLY BUDGET	Housing	€900
	Bills	€100
	Food and drink	€250
	Public transport	€43
	Entertainment & leisure	€150
	TOTAL	€1443



# Financial Support

SOURCE	AMOUNT IN STERLING
Maintenance Loan	Up to £12,076 per year
Bursaries and Scholarships	Up to £1,700 per year
Housing Benefit Allowance (CAF)	Approximately €235 per month for a studio, approximately €130 for a flatshare or homestay

Further information can be found at:  
<https://www.gov.uk/student-finance>

# Loan applications

## Important

ULIP applicants must use Queen Mary University of London (QMUL) codes for their loan applications

University	Queen Mary University of London, Mile End Road, London, E1 4NS
UCAS university code	Q50
UCAS campus code	C

<https://www.gov.uk/student-finance>



# Visa - application process

1

Register on  
the EEF  
(Etudes en  
France)  
platform

2

Apply for  
your visa on  
France-  
visas.gouv.fr  
and book  
your  
appointment  
at TLS  
Centre

3

Drop off your  
passport and  
documents at  
TLS Contact  
Centre

4

Pick up your  
visa from  
TLS Contact  
or select the  
return by  
courier option



# Etudes en France (EEF)

pastel.diplomatie.gouv.fr/etudesenfrance/dyn/public/authentification/login.html?codeLangue=EN


MINISTÈRE DE L'EUROPE ET DES AFFAIRES ÉTRANGÈRES

ÉTUDES EN FRANCE

Sign up Sign in EN

Welcome to  
Études en France

Looking for a training course ? →



Can I apply using the Études en France platform ?

I am a resident of one of the following countries and territories :

Select a country or a territory

<https://pastel.diplomatie.gouv.fr/etudesenfrance/>



# EEF platform – supporting docs

## Valid passport

- Valid passport, with an expiry date at least 3 months after the end of the visa duration

## Proof of enrolment from current institution

- Signed statement from your current school or college (or latest school if on gap year)

## Letter of acceptance from the Institute in Paris

- The Institute in Paris will provide a bespoke document, do not use UCAS offer or email confirmation

## Personal statement

- Short personal statement indicating your reasons for choosing to study in France



# France Visas



## 1. Do you need a visa ?

- > Test in 3 minutes
- > List of supporting documents
- > Applicable fees



## 2. Start your visa application

- > Create an account
- > Fill out the application form



## 3. Submit your application

- > Book an appointment
- > Practical information
- > Local features



## 4. Track your application

- > Check your application status
- > Collect your passport
- > Prepare for your stay in France

<https://france-visas.gouv.fr/web/france-visas/accueil>



# France Visas – supporting docs

## Valid passport

- Valid passport, with an expiry date at least 3 months after the end of the visa duration

## EEF confirmation

- You will receive this once your EEF registration is complete, usually within one week of submission

## Proof of housing

- Proof of housing (at least 3 weeks), or letter from the Institute in Paris confirming housing option

## Proof of sufficient funds

- Proof of sufficient funds (at least 615€ per month) e.g. bank statement or student loan eligibility



# TLS contact

**TLScontact**  
A Teleperformance Company

English ▼

## Welcome to the French Visa Application Centre in the United Kingdom

Your partner in the United Kingdom for all your visa applications for France 🇫🇷

Select your centre



Edinburgh



London



Manchester

<https://www.tlscontact.com/en/>



UNIVERSITY  
OF LONDON

INSTITUTE  
IN PARIS

[london.ac.uk/institute-paris](https://london.ac.uk/institute-paris)



# Visa - cost and timeline

## Cost

- EEF registration: £110
- Visa fee - 50€ (to be paid in GBP at corresponding exchange rate)
- TLS Service fee - 55€
- Optional service: Return by courier (£30)

## Timeline

- EEF registration: once you have a firm offer – we will send acceptance letters in May
- France-visas.gouv.fr: 3 months before intended travel at the earliest
- Appointment 20 days before departure

# Visa – what next

## Within 3 months of arriving in France

Within three months of arriving in France, you must validate your long-term student visa (VLS-TS) via an online process which will confirm your right to stay in France for the first academic year

## 2 months before VLS-TS expiry

At least two months before your VLS-TS expires, you should apply for the renewal of your residency permit which will last until the end of your programme of study

# Healthcare

UK students can apply for a Global Health Insurance Card (GHIC) providing same cover as former EHIC card.

## However

We recommend students register with French social security via the Ameli étudiant étranger platform. This will facilitate reimbursements of medical costs and give you a social security number which employers will ask for.

Students will be guided through the process during induction week.



# Questions?



## Student Services

Claire Miller-Bersoullé

Catherine Duperray

Malo Ito

Tel: +33 1 44 11 73 76/83/94

[contact@ulip.lon.ac.uk](mailto:contact@ulip.lon.ac.uk)

## Students' Union

[su.president@ulip.lon.ac.uk](mailto:su.president@ulip.lon.ac.uk)

ULIP Facebook group





**UNIVERSITY  
OF LONDON**  
**INSTITUTE  
IN PARIS**

**Make Paris  
your  
campus**

