



**UNIVERSITY  
OF LONDON**

**2023**

Postgraduate programmes in

# Data Science

With academic  
direction from:

**Goldsmiths**  
UNIVERSITY OF LONDON

[london.ac.uk/data-science](https://london.ac.uk/data-science)

World class. Worldwide.

# A University of London degree from anywhere in the world

- 1 Gain the professional skills that are in demand by employers**  
Learn how to apply technology to real-world data science problems and gain an in-depth understanding of emerging technologies, statistical analysis and computational techniques. Acquire transferable skills that will help advance your career.
- 2 Choose from specialist pathways that fit your career aspirations**  
You can choose to specialise in Artificial Intelligence or Financial Technology depending on your interests.
- 3 Flexible learning options**  
We offer you the flexibility to fit your studies around your working life. If you need to travel, you can take your studies with you.
- 4 Student support**  
All students will have access to the Virtual Learning Environment. If you register for support at one of our Recognised Teaching Centres, you will receive face-to-face classes and tutor support. If you're a web-supported learner, you will join an online tutor group.
- 5 A mark of excellence**  
You'll gain a prestigious qualification, respected by employers worldwide. The programme has been developed by Goldsmiths, University of London, one of the UK's top institutions for innovation and creativity.

# Contents

## Postgraduate programmes in Data Science

A University of London degree from anywhere in the world	2
Apply your knowledge to real-world data	4
Goldsmiths, University of London	5
Online and flexible learning explained	6
Take your career to the next level	8
Degree structures	9
Entry requirements	13
Fees and further information	14

## Key dates

### April 2023 intake:

Applications open:  
14 December 2022

Applications close:  
13 March 2023

Registration closes:  
27 March 2023

Programme starts:  
17 April 2023

### October 2023 intake:

Applications open:  
26 June 2023

Applications close:  
11 September 2023

Registration closes:  
25 September 2023

Programme starts:  
9 October 2023



# Apply your knowledge to real-world data



**Managing and analysing big data has become an essential part of modern finance, retail, marketing, social science, development and research, medicine and government.**

This programme addresses the skills shortage of data scientists who can use data to drive improvements to organisational performance. Students will have the opportunity to build their professional portfolios through project work.

## **Gain highly valued skills**

The MSc Data Science suite of programmes offers students skills which will help them not only in their current job but prepare them for their future career trajectory. This programme teaches the skills needed by data scientists to drive

improvements to organisational performance. By combining the statistical and computational skills to generate insights, data can be used to enhance business delivery across a range of sectors. Students will learn the mathematical foundations of statistics, data mining and machine learning, and apply these to practical, real-world data.

The MSc Data Science has been developed by the University of London with academic direction by Goldsmiths, University of London, which offers a similar programme on campus.

The innovative study method gives students the freedom, right from the start of their studies, to create their own software projects.

## **A trusted name in global education**

Founded in 1836, the University of London is one of the oldest and most prestigious universities in the UK. In 1858, we made our degrees

available to study anywhere in the world. We now have more than 48,000 students in 190 countries.

Among our former students are six Nobel Prize winners, including: Nelson Mandela; the eminent Caribbean writer, Derek Walcott; and Charles Kao, a pioneer in the development of fibre optics.

## **London as an academic base**

London is home to some of the world's most innovative and entrepreneurial companies. Over a third of all European billion-dollar start-ups are based in the UK. Many of the creative tech giants, including Facebook and Google, have offices in London.

The MSc Data Science draws upon the city's creative environment. You'll be equipped with skills that will keep you up to date with the leading industry trends and innovations, wherever you are in the world.

# Goldsmiths, University of London

The academic content for the postgraduate Data Science programmes has been developed by the Department of Computing at Goldsmiths, one of the UK's top creative universities.

Founded in 1891, Goldsmiths is world renowned for teaching and research in creative, cultural and computational disciplines. Goldsmiths encourages students to explore ideas, challenge boundaries, investigate fresh ways of thinking and stretch themselves intellectually and creatively. The Department of Computing at Goldsmiths is driven by a view of computer science that captures this spirit.

The department uses a hands-on, project-based style of teaching for a range of topics, from data and computer science all the way through to art, music, the social sciences and journalism.

This ethos has created highly interactive degrees which make use of the latest technology within education. You will learn from experts in the field, whose experiences span many regions and industries.

Besides data science, Goldsmiths' Department of Computing research and teaching also covers an array of topics, including computational art, virtual reality, computer music, digital sociology and education technology.

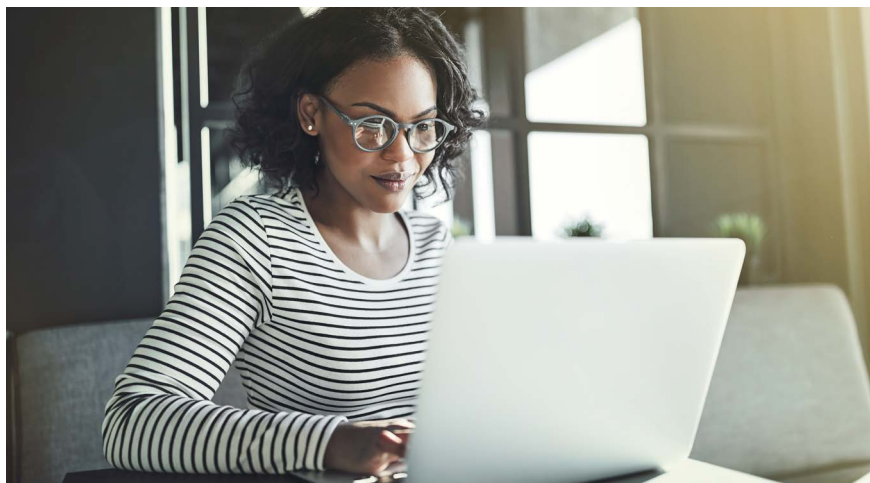


## Professor Robert Zimmer

Head of Department of  
Computing, Goldsmiths

'I am intensely proud of these programmes. I love that they empower students from all over the world to understand and solve real problems by gathering, presenting and analysing data using AI and mathematics. The rise of AI is radically changing what we humans can do. Goldsmiths is at the forefront of researching AI-enabled transformations in fundamental biology, medical practice, finance, behavioural science, marketing and arts. These programmes enable us to spread our excitement in changes data science is making in the modern world.'

# Online and flexible learning explained



## You can choose to start the degree in either April or October.

The MSc Data Science degree can be completed in up to five years or as soon as one year.\* Each module is studied over 22 weeks and requires an average of five to seven study hours per week. You can study up to six new modules at a time (or four, plus your Final Project).

1. Decide when you want to enrol, either in April or October.

2. Then choose whether you want to enrol:

- as a web-supported learner: this means you'll join an online group, where your tutor will provide support via discussion groups

or

- with a Recognised Teaching Centre (where available). You'll be able to attend face-to-face classes and meet up with other students on your course.

\*Subject to module availability.

## A choice of pathways

You can register for the general Data Science pathway or choose from one of two specialist pathways in:

- Artificial Intelligence
- Financial Technology.



## Dr Larisa Soldatova

MSc Data Science Module Leader

'We are excited to be offering a unique Data Science degree that is specifically designed to address the challenges of the present and future workplace.'

Data analytic techniques are evolving fast, new data is being produced at an unprecedented rate across the world and the tools we use to process it are becoming more intelligent. This programme will equip you with the necessary skills to become a leading data science specialist in our modern society. You will gain the theoretical and computational skills needed to extract insights from data and to conduct data analysis in a wide range of applications.'





## Guaranteed tutor support

All students receive tutor support and feedback while studying this programme. Tutors introduce the modules, respond to queries and provide guidance on the assessments. If you register as a web-supported learner, you will become a member of an online group, which is facilitated by a tutor who provides support via discussion groups and regular messages to keep you on track.

If you register for support at one of our Recognised Teaching Centres, you will be able to attend classes and benefit from tutor support.

For details about Recognised Teaching Centres, please visit: [bit.ly/teaching-centres](http://bit.ly/teaching-centres)

## Build up your qualifications

The flexible nature of the programme means that you can choose to study for an MSc, Postgraduate Diploma or Postgraduate Certificate (for the general pathway only).

If you choose to register on the Postgraduate Certificate or one of the Postgraduate Diploma programmes, upon completion you may decide to progress to a higher award, a related Postgraduate Diploma or an MSc respectively.

Alternatively, if you register on an MSc, you can apply for a Postgraduate Certificate in Data Science or a related Postgraduate Diploma as you progress through your MSc studies and complete the required modules. Please visit: [bit.ly/DataSci-modules](http://bit.ly/DataSci-modules)

## Assessment

The format and mode of assessment for this programme may change due to events or circumstances beyond our control. A mixture of coursework and examinations is usually used; see our module web page for more information: [bit.ly/DataSci-modules](http://bit.ly/DataSci-modules). Students will be informed of their assessment arrangements via the Virtual Learning Environment (VLE), once confirmed. For the latest information on examinations, please visit: [london.ac.uk/exams](http://london.ac.uk/exams)

## Celebrate your graduation

After successfully completing your degree, you will receive a University of London award and an invitation to the annual graduation ceremony in London. The event is usually headed by the University of London's Vice-Chancellor or the Chancellor, HRH the Princess Royal.

# Take your career to the next level

We know it's important to consider your future career before you embark on a degree. So, how will the MSc Data Science and its offer of focused specialisms help you to achieve your goals?

## MSc Data Science

The MSc Data Science programme develops analytical and critical skills, providing you with the tools and competencies needed to intelligently interrogate numerical, textual and qualitative data. This includes extracting meaning from raw information and communicating the results of their investigations and their implications to stakeholders or other interested parties.

These skills can lead to a variety of careers with small and large technology firms, the biomedical research sector, the charitable and voluntary sector and the public research sector.

Throughout the programme, you will learn the skills required to explain and critically assess machine learning and statistical data mining techniques, critically evaluate emerging data analysis technologies and analyse in depth how data analysis techniques can be applied to a range of interdisciplinary research areas, among other skills.



## MSc Data Science and Artificial Intelligence

The MSc Data Science and Artificial Intelligence programme develops analytical and practical skills, providing you with the tools and competencies of intelligent data analysis for decision-making and problem solving. This includes reporting the results of your investigations and their implications to stakeholders or other interested parties. These skills can lead to a variety of careers with leading technology firms, in robotics, the military, academia and the public research sector.

## MSc Data Science and Financial Technology

The MSc Data Science and Financial Technology programme develops analytical and practical skills, providing you with the tools and competencies needed to intelligently analyse financial data and modern financial markets; to evaluate and predict investment behaviour and investment decisions; and to communicate the results of your investigations and their implications to stakeholders or other interested parties. These skills lead to a variety of careers with employers from the financial sector, including financial planning, insurance, marketing and investment banking.

For further details on programme specifications and module outlines, please visit: [bit.ly/DataSci-modules](https://bit.ly/DataSci-modules)



# Degree structures

## Data Science

### MSc

**Four core modules:**

Statistics and Statistical Data Mining

Machine Learning

Data Programming in Python

Big Data Analysis

**Plus two compulsory modules:**

Data Visualisation

Data Science Research Topics

**Plus four optional modules from:**

Natural Language Processing

Social Networks and Graph Analysis

Artificial Intelligence

R for Data Science

Neural Networks

Blockchain Programming

Financial Data Modelling

Financial Markets

Mathematics for Data Science

**Plus:**

Final Project in Data Science

### Postgraduate Diploma

**Four core modules:**

Statistics and Statistical Data Mining

Machine Learning

Data Programming in Python

Big Data Analysis

**Plus two compulsory modules:**

Data Visualisation

Data Science Research Topics

**Plus two optional modules from:**

Natural Language Processing

Social Networks and Graph Analysis

Artificial Intelligence

R for Data Science

Neural Networks

Blockchain Programming

Financial Data Modelling

Financial Markets

Mathematics for Data Science

### Postgraduate Certificate

**Two core modules:**

Statistics and Statistical Data Mining

Machine Learning

Data Programming in Python

Big Data Analysis

**Plus two optional modules from:**

Natural Language Processing

Social Networks and Graph Analysis

Artificial Intelligence

R for Data Science

Neural Networks

Blockchain Programming

Financial Data Modelling

Financial Markets

Data Visualisation

Data Science Research Topics

Mathematics for Data Science

Any core modules not already taken from the list above.

## Data Science and Artificial Intelligence

### MSc

#### Four core modules:

Statistics and Statistical Data Mining

Machine Learning

Data Programming in Python

Artificial Intelligence

#### Plus three compulsory modules:

Big Data Analysis

Neural Networks

Data Science Research Topics

#### Plus three optional modules from:

Data Visualisation

Natural Language Processing

Social Networks and Graph Analysis

R for Data Science

Blockchain Programming

Financial Data Modelling

Financial Markets

#### Plus:

Final Project in Data Science and Artificial Intelligence

### Postgraduate Diploma

#### Four core modules:

Statistics and Statistical Data Mining

Machine Learning

Data Programming in Python

Artificial Intelligence

#### Plus three compulsory modules:

Big Data Analysis

Neural Networks

Data Science Research Topics

#### Plus one optional module from:

Data Visualisation

Natural Language Processing

Social Networks and Graph Analysis

R for Data Science

Blockchain Programming

Financial Data Modelling

Financial Markets

## Data Science and Financial Technology

### MSc

#### Four core modules:

Statistics and Statistical Data Mining

Machine Learning

Data Programming in Python

Financial Data Modelling

#### Plus three compulsory modules:

Big Data Analysis

Blockchain Programming

Financial Markets

#### Plus three optional modules from:

Data Science Research Topics

Data Visualisation

Natural Language Processing

Social Networks and Graph Analysis

Artificial Intelligence

R for Data Science

Neural Networks

#### Plus:

Final Project in Data Science and Financial Technology

### Postgraduate Diploma

#### Four core modules:

Statistics and Statistical Data Mining

Machine Learning

Data Programming in Python

Financial Data Modelling

#### Plus three compulsory modules:

Big Data Analysis

Blockchain Programming

Financial Markets

#### Plus one optional module from:

Data Science Research Topics

Data Visualisation

Natural Language Processing

Social Networks and Graph Analysis

Artificial Intelligence

R for Data Science

Neural Networks



# Entry requirements

## Entry routes

We offer two entry routes into these programmes, so if you do not meet the academic requirements, you may still be eligible to apply through an alternative route.

### Entry Route 1

To be eligible to register for any of the Data Science programmes, you must have the following:

- a bachelor's degree (or an acceptable equivalent) in a **relevant subject** which is considered at least comparable to a UK second class honours degree, from an institution acceptable to the University.

### Entry Route 2

If you do not meet the academic requirements for Entry Route 1, you can apply for the programme via Entry Route 2.

To be eligible to register, you must have the following:

- a bachelor's degree (or an acceptable equivalent) in **any subject** which is considered at least comparable to a UK second class honours degree, from an institution acceptable to the University.

For Entry Route 2, you will also be required to complete an online

preparatory course prior to registration. The online preparatory course, 'Foundations of Data Science,' requires approximately 30 hours of study.

This route helps you to develop the necessary skills to complete the full MSc programme successfully.

For more details on entry requirements and eligibility, please visit: [bit.ly/DataSci-entry-reqs](https://bit.ly/DataSci-entry-reqs)

## Recognition of prior learning

Recognition of prior learning (RPL) is our acceptance of a qualification in place of one (or more) modules of the MSc, so you don't need to take them as part of your degree. If your prior learning is recognised, you could complete the MSc more quickly by studying fewer modules. For this programme, the University of London may recognise your prior learning and award you credit towards the qualification up to the value of 120 UK credits.

## How we recognise prior learning

We recognise qualifications automatically if we have already confirmed that they meet the learning outcomes of a particular module or set

of modules. For qualifications we have not reviewed before, any recognition is classed as discretionary. If you believe a qualification you hold reflects similar learning outcomes to any particular MSc modules, you can apply for this to be recognised. For more information on RPL, please visit: [bit.ly/UoL-RPL](https://bit.ly/UoL-RPL)

## English language requirements

If your first language is not English, you will be required to show evidence of your English language skills. This can range from an IELTS test score to evidence that you have undertaken substantial education or work experience in English. Please see our website for more details: [london.ac.uk/data-science](https://london.ac.uk/data-science)

## Computer requirements

You must have regular access to a computer with an internet connection to use the University of London website and Student Portal. The programme's study resources are located on the Virtual Learning Environment (VLE). Please see our website for more details: [london.ac.uk/data-science](https://london.ac.uk/data-science)



## Sarah Rauchas

Lecturer in Computing, Goldsmiths

'It has a solid academic foundation, where you learn about the theory behind techniques and approaches, as well as practical aspects, where you learn about applying those techniques. So graduates, depending on their interest of course, might be engaged in developing new techniques, or they might be engaged in using techniques to solve practical problems. The content of the modules is exciting and inspiring, and of high quality. The academics at Goldsmiths who are engaged on this programme are passionate about their areas of expertise, and also passionate about engaging with and supporting students. I'm very pleased to be a part of this.'

# Fees and further information

## Gain a prestigious University of London qualification at outstanding value.

The degree fee varies depending on a number of factors, which include:

- where you live
- whether you receive online or face-to-face tutor support.

Our module fees include access to study materials and entry into assessments, but not the fee for sitting exams. All exam fees should be paid directly to your local exam centre. More details are available at: [london.ac.uk/data-science](https://london.ac.uk/data-science)

The total fee payable to the University of London for 2023–2024 will be published on our website once confirmed. On average, fees incur a five per cent year-on-year increase. For the latest information on programme fees, please visit: [london.ac.uk/fees](https://london.ac.uk/fees)

**Please note:** Student fees shown on our website are net of any local VAT, Goods and Services Tax (GST) or any other sales tax payable by the student in their country of residence. Where the University is required to add VAT, GST or any other sales tax at the local statutory rate, this will be added to the fees shown during the payment process. For students resident in the UK, our fees are exempt from VAT.

## Employer sponsorship

If you're working and apply to study for this degree, your employer may be willing to help with the cost. Our online programmes are ideal for employers, because they keep you as an employee while they benefit from the additional skills you bring to the workplace.

For information about the University of London and the benefits of sponsorship, please visit: [london.ac.uk/employers](https://london.ac.uk/employers)

## About your qualification

When you graduate, you receive your Final Diploma and a Diploma Supplement.

### The Final Diploma includes the following information:

- you were awarded a University of London degree, diploma or certificate
- Goldsmiths, University of London was your education provider
- the University of London crest and the Vice-Chancellor's signature.

If, for any reason, you are unable to finish your MSc or Postgraduate Diploma programme, an exit award (i.e. a Postgraduate Certificate or Postgraduate Diploma) may be granted for the successful completion of 60 or 120 credits respectively. All exit awards are granted at the discretion of the exam board.

### The Diploma Supplement includes the following information:

- the award you successfully completed
- your transcript of modules taken, marks achieved and overall classification
- the role of Goldsmiths, University of London.

Distance and flexible learning qualifications are not always recognised by every country's authorities or regulators when it comes to employment or further study. It is advisable to check the recognition status of this degree in your country of study before enrolling on the programme.





The information contained in this prospectus was correct at the date of publication but may be subject to change. The University does not intend by publication or distribution of this prospectus to create any contractual or other legal relation with applicants, registered students, their advisers or any other persons. For the most up-to-date information, please visit our website.

Published by University of London.

Copyright © University of London, February 2023.

For further information on the range of programmes we offer, please visit our website ([london.ac.uk](http://london.ac.uk)) or contact us at:

**The Student Advice Centre**

University of London  
Senate House, Malet Street  
London WC1E 7HU  
United Kingdom

Telephone enquires: +44 (0)20 7862 8360

Online enquiries: [sid.london.ac.uk](mailto:sid.london.ac.uk)



View the  
**Data Science**  
web page

This material is available in alternative formats upon request.  
Please contact: [special.arrangements@london.ac.uk](mailto:special.arrangements@london.ac.uk)

Follow us on:



[london.ac.uk/facebook](http://london.ac.uk/facebook)



[london.ac.uk/flickr](http://london.ac.uk/flickr)



[london.ac.uk/instagram](http://london.ac.uk/instagram)



[london.ac.uk/issuu](http://london.ac.uk/issuu)



[london.ac.uk/linkedin](http://london.ac.uk/linkedin)



[london.ac.uk/twitter](http://london.ac.uk/twitter)



[london.ac.uk/youtube](http://london.ac.uk/youtube)

[london.ac.uk/data-science](http://london.ac.uk/data-science)