



UNIVERSITY
OF LONDON

2024

Undergraduate programmes in

Economics, Management, Finance and the Social Sciences

With academic
direction from:



THE LONDON SCHOOL
OF ECONOMICS AND
POLITICAL SCIENCE

london.ac.uk/emfss

World class. Worldwide.

Join the World Class



1 **A mark of excellence**

Gain a degree from the University of London (with academic direction from the LSE), a mark of excellence, respected worldwide since 1858.

2 **Study without relocating**

Study at a teaching centre near you and gain a prestigious qualification. With no international travel, relocation or accommodation costs, studying a University of London programme at a distance is more affordable than coming to London to study on campus.

3 **Quality of curriculum**

The programmes in this prospectus are developed and examined/assessed by academics at LSE, a federation member of the University of London and one of the world's leading social science universities.

4 **Employability**

Develop transferable employability skills, such as Complex Problem Solving, Adaptability and Resilience, which are sought after by top employers worldwide.

5 **Global alumni network**

On graduation join our global community of influential alumni, from leaders in business and industry to Nobel Prize winners.



“In a fast changing environment of worldwide access to higher education, a University of London degree continues to offer a guarantee of quality, value and intellectual rigour.”

Professor Wendy Thomson
Vice-Chancellor,
University of London

Your prestigious University of London qualification



About your qualification

When you graduate with a degree, diploma or certificate from the University of London you will receive two important documents – your Final Diploma (the certificate you receive on graduation) and a Diploma Supplement.

The Final Diploma

- Indicates that you were registered with the University of London and awarded a University of London degree, diploma or certificate.
- Gives the name of the London School of Economics and Political Science as the federation member that developed the syllabus, curriculum and provided assessment.
- Features the University of London crest and the Vice-Chancellor's signature.

The Diploma Supplement

- Describes the nature, level and content of the programme you successfully completed.
- Includes the transcript of courses taken, marks achieved and overall classification.
- States the role of the London School of Economics and Political Science and the method of study.

Contents

Key dates

Applying for an EMFSS programme
(Please note: This includes all BSc,
Graduate Diploma programmes
and Certificate of Higher Education
in Social Sciences – CHESS)

Step 1: For all programmes you
must apply to a Recognised
Teaching Centre.

Please contact them for their
specific application deadline:
bit.ly/teaching-centre-study

University of London
Application deadline:
1 October 2024

Step 2: Following your successful
application you will register
for your programme with
the University of London.

University of London
Registration deadline:
1 November 2024

Examinations:
May and June

Second Examinations Session:
October and November

Undergraduate programmes in Economics, Management, Finance and the Social Sciences

Introduction

World-class academic direction from LSE	6
Our programmes	8
How you study	10
Support for your studies	11
Careers and study support during your programme	12
Fast track to professional accreditation	14

Programmes

EMFSS degree programmes	17
Accounting, Banking and Finance	18
Business and Management	19
Data Science	20
Economics	22
International Relations and Politics	23
Graduate Diplomas	24
Certificate of Higher Education in Social Sciences (CHESS)	26

Reference

Entrance requirements	28
Further information	30

World-class academic direction from LSE

LSE is a world-leading university specialising in the social sciences and home to an inspirational international community. We were ranked 2nd in Europe for Management and Social Sciences in the 2023 QS World University subject rankings.

LSE is unique in its focus on social sciences. The School pioneered the study of social sciences, economics and international relations, and LSE academics continue to be among the leading thinkers in these fields. LSE's world-class faculty use their research to influence governments and non-governmental organisations and assist businesses in tackling the world's problems.

LSE is rooted in London, but the School is proud to be international. We consider students on the University of London programmes to be important members of our community – one of the most diverse in the world.

Stand out from the crowd

LSE was founded to understand the causes of things, in order to transform them. It is our commitment that the Economics, Management, Finance and Social Sciences (EMFSS) programmes will give students the ability to lead in solving problems of contemporary global relevance.

You will graduate with additional knowledge, skills and ways of thinking about the world that will translate

to further study at undergraduate or master's level, or to the workplace.

These skills will help propel you into careers in a wide variety of fields, from accounting, banking and information systems, to the media, civil service and journalism. Equally, many EMFSS graduates find that their degree has given them the rounded preparation needed for success at master's level study.

EMFSS programmes

The EMFSS programmes are all University of London qualifications. LSE is a federation member of the University of London and provides the academic direction for the EMFSS programmes. This means that LSE is responsible for the following:

- planning the structure and content of each EMFSS programme
- developing and writing the study materials
- setting examination papers and marking the scripts
- determining the curriculum and progression of students.

Your final degree, diploma or CHES certificate will be from the University of London and will identify LSE as having developed the syllabus, curriculum and provided assessment.

Bachelor of Science degrees

Our flexible bachelor's degrees are offered via two different study routes to meet differing student needs. The Standard Route has been designed for students embarking on their initial bachelor's degree.

The Graduate Entry Route is for students wishing to undertake an additional bachelor's degree. It provides a fast-track opportunity to specialise in a field, with focused course options and subject groups to choose from. This route is of particular interest to graduates who wish to take their careers, or postgraduate study, in a different direction to their first degree.

Graduate Diplomas

These undergraduate-level diplomas are designed for graduates who want to acquire additional university-level education but in a different subject area to their first degree.

These qualifications are of particular interest to those who seek to upskill in order to change professions but do not require a full second degree.

Certificate of Higher Education in Social Sciences (CHES)

The CHES is an entry-level qualification which is of interest to students who would like to progress onto an EMFSS Bachelor of Science degree.

Programme benefits

Our EMFSS programmes are designed to provide students with a wide choice of study options.

- You can opt to study at your own pace, taking up to six years to complete your Bachelor of Science degree, five years to complete a Graduate Diploma and one to three years to complete the CHES.
- The Virtual Learning Environment (VLE) provides access to online study material, self-test activities and study skills advice.
- EMFSS students and graduates have the opportunity to be considered for LSE Summer School and master's scholarships. In 2023, around 100 EMFSS students attended the LSE Summer School.



LSE was founded in

1895

It is now one of the foremost social science universities in the world

37

World leaders
(past and present)

18

Nobel Prize
winners

have taught or studied at LSE

120+

LSE academics are responsible for the academic direction, content and assessment of the EMFSS degrees and diplomas offered via the University of London

25

Graduates of the University of London are currently undertaking postgraduate study at LSE in London

Our programmes

BSc degrees

BSc degrees in the EMFSS programme are based on undergraduate degrees taught at LSE. Although the study experience is different, the examinations themselves are aligned as closely as practicable with those at LSE and are set and marked to the same standards.

There are 12 degrees to choose from. Most of the programmes are assessed by a single examination. Some courses will have continuous assessment implemented in the form of Multiple Choice Questions (MCQs) and will first be available to students on 1 September of the academic year they are launching (e.g. MCQs launched in academic year 2024/2025 will first be available to students on 1 January 2025) but some also have a project/coursework component.

A University of London degree

Undergraduate degrees of the University of London are awarded with Honours. The award certificate will indicate the level of the academic performance (Honours) achieved by classifying the award. The classification of the degree will be based on the ratified marks from the completed assessments. The standard classification system for bachelor's degrees with Honours is:

- First Class
- Upper Second Class
- Lower Second Class
- Third Class

A Pass Degree or Ordinary Degree is a degree without Honours.

Recognised Teaching Centres

The University of London currently works with a growing network of over 100 Recognised Teaching Centres worldwide (over 30 specifically for the EMFSS programmes) which provide tuition support for our students. Some Recognised Teaching Centres offer the programmes as parallel degrees. For more details visit: bit.ly/recognised-centres

For those interested in studying online, see: onlinecourses.london.ac.uk

Courses

All the EMFSS programmes are made up of units of study called courses. Each course covers a specific topic and is examined separately.

Your EMFSS programme will be made up of 12 courses. Full courses are worth 30 credits, whereas half courses are worth 15 credits. Some of the courses within your programme will be mandatory, whereas others are optional and can be selected by

you from the designated Selection Groups. To see which courses are available, go to: london.ac.uk/emfss and select the relevant degree.

Choosing your courses

For most degrees you have a certain amount of choice in the courses that you take. You have control, within certain guidelines, over the number and choice of examinations you take each year. For more information on available degrees, structures and course outlines, please see: london.ac.uk/emfss

The FHEQ framework

The UK Quality Assurance Agency for Higher Education has prepared a framework (Framework for Higher Education Qualifications – FHEQ) for classifying the level of courses to permit the comparability of those taught in different institutions. University undergraduate courses are classified at three levels corresponding to standard three-year undergraduate degrees: Level 4 (introductory), Level 5 (intermediate) and Level 6 (advanced). Level 7 is graduate level for master's degrees. In terms of the EMFSS awards:

- 100 numbered courses are classified as FHEQ Level 4
- 200 numbered courses are classified as FHEQ Level 5
- 300 numbered courses are classified at FHEQ Level 6.

Award/Level	Why consider this?	Courses	Duration
If you do not currently meet the entrance requirements for our degrees			
Certificate of Higher Education in Social Sciences (FHEQ Level 4)	<p>If you can attend one of the Recognised Teaching Centres with permission to teach the programme and you wish to:</p> <ul style="list-style-type: none"> • progress on to the degree programme but do not meet the entrance requirements for the degree • gain a stand-alone qualification that will admit you into the second year of the BSc programmes listed in this prospectus and degrees at many universities in the UK, USA and Australia. 	4	1–3 years ▲
If you meet the entrance requirements for our degrees			
BSc Standard Route (FHEQ Level 6)	<ul style="list-style-type: none"> • To gain a world-class degree through flexible study. • If you have previously studied similar material to a comparable level and depth you can apply for recognition of prior learning (RPL) for up to four full 100 level courses. 	12	3–6 years
If you already have a first degree (bachelor's degree)			
BSc Graduate Entry Route (FHEQ Level 6)	If you hold a full first degree and want a flexible way to gain a second degree, you may be able to complete a shorter than usual study programme (a minimum of two years for most degrees).	9	2–6 years †
Graduate Diplomas (FHEQ Level 6)	If you hold a full first degree in any discipline but, for professional or personal reasons, wish to secure a stand-alone qualification in a named discipline in the fields of Economics, Management, Finance and the Social Sciences. You may also use the diploma as a basis for progression into postgraduate study in a related area.	4	1–5 years

All students will need to register at, and pay fees to, a local Recognised Teaching Centre.

See page 28 for entrance requirements for: **CHES**, **BSc degrees (Standard and Graduate Entry Route)** and **Graduate Diplomas**.

There are many qualifications, from the UK and overseas, which satisfy the University's entrance requirements. For more information visit: bit.ly/Gen-Entry-Quals

▲ If you successfully complete the CHES you can transfer to, and complete, a BSc degree in a further two years, paying continuing registration fees.

† The BSc Accounting and Finance, BSc Economics, BSc Economics and Finance, and BSc Management and Digital Innovation have a three-year minimum registration period.

How you study

Am I ready to study?

A University of London qualification is highly regarded worldwide. Given the academic rigour of our programmes, to achieve good results requires a high degree of self-motivation. But your hard work will be worth it in the end, as you will join a community of alumni with excellent career prospects.

Flexible study

If classes at your teaching centre allow, you can manage your studies to fit in with your own schedule and responsibilities. You do not have to enter for examinations every year if you have not had enough time to allocate to your studies. As a guide, you should dedicate at least 35 hours per week for approximately 34 weeks of the year if you intend to complete the maximum of four courses in one year.

Study materials

Your study materials are available through the VLE and are specially written by academics appointed by LSE. The cost of your online course materials is included in your initial and continuing registration fees.

Materials may include a course information sheet, online subject guides and/or online course materials and past examination papers with examiners' commentaries.

Books

Although many courses will provide access to the core textbooks free of charge, for others you may need to purchase your own books. Our official online bookstore partners can help with sourcing any texts you need to buy.

Webinars

EMFSS offers a series of live webinars presented by LSE staff, providing study and revision guidance for selected courses, as well as other topics such as study skills and careers.

Library support

LSE library

Registered students have free-of-charge in-person access to the main LSE Library on a reference basis. For more information please see: lse.ac.uk/library

Senate House Library

Registered students are entitled to free reference access to Senate House Library. However, there are membership fees payable for those who wish to borrow books. For more information please see: bit.ly/SHL_info



Camila Huertas Campos

Universidad del Pacífico, Peru

'The academic direction provided by LSE allows students to develop their critical and creative thinking skills and learn how to apply them effectively during their studies.'

Assessment

The format and mode of assessment for this programme may change due to events or circumstances beyond our control. Students will be informed of their assessment arrangements via their VLE, once confirmed. For the latest information on examinations, please visit: london.ac.uk/exams

Support for your studies



Online support

You must have access to the internet so that you are able to make use of resources which are only available online. See computer requirements:

bit.ly/computer-reqs

Once registered, we will send you a University of London username and password enabling you to log in to the Student Portal. You can then access your University of London email account and the following two key resources:

The Virtual Learning Environment (VLE)

This provides online courses and additional resources to enhance your studies, including:

- subject guides for each course to guide you through your study
- videos delivered by LSE academics, including tutorials and worked examples

- online activities that allow you to develop your understanding
- study skills advice, digital literacy, and exam preparation.

The Online Library

You can download journal articles required for your studies from the Online Library for free. The majority of the essential readings across all EMFSS courses are available through the Online Library.

LSE Summer School

LSE runs Summer School over nine weeks in three separate sessions, from late June to mid-August each year. This unique opportunity gives students on the University of London programmes the chance to study at LSE in person, to engage directly with the School's world-class faculty and to meet other EMFSS students from their global network. More than 100 students attended the LSE Summer School in

London in 2023 as part of a cohort of thousands of students from across the globe.

A vast range of academically rigorous courses are available across a number of subjects and levels, taking place in state-of-the-art teaching facilities. All programmes are led by LSE academics, and are suitable for undergraduates, postgraduates and professionals. There is also a comprehensive professional skills and social programme, helping students expand their experience, grow their networks and explore London and beyond.

EMFSS students can receive credit for LSE Summer School courses towards their University of London degree. Students are also eligible for a 15 per cent discount on their Summer School fees. Visit: lse.ac.uk/summerschool

Spend a year at LSE

Students who have completed at least four courses from the degree are able to apply for admission to the LSE General Course (typically spending your third year of study in London) and claim credit for the successful completion of relevant courses. The General Course is an opportunity for selected EMFSS students to experience life at LSE, attending lectures and classes for the period of a full academic year of study (September–July). For more information visit: bit.ly/LSE_Global_Learning

Careers and study support during your programme



LSE LIFE

LSE LIFE is a team based at LSE who support students to develop and hone their study skills such as exam preparation, time management, essay writing, and critical thinking. During the academic year, they provide EMFSS students with opportunities to:

- attend bespoke workshops tailored to the EMFSS programme, delivered by an LSE LIFE Learning Developer
- receive personalised, one-to-one study advice in an online meeting with an LSE LIFE Study Adviser
- explore interactive online activities and resources in their own time, via the EMFSS Virtual Learning Environment (VLE).

Revision Webinars

The LSE-run Revision Webinar sessions for select courses yearly in March and April in preparation for students' examinations. Revision Webinars are developed solely for EMFSS students and are an opportunity to hear directly from the course's author or Chief Examiner, reviewing common examination topics and tips on how to prepare and answer questions during the exam. Students also have the chance to ask their own questions to EMFSS students studying across the world and connect with LSE academics.

University of London Careers Service

At the University of London (UoL) Careers Service, our mission is to advance the employability and careers prospects of our community, whatever they study, wherever they live and whatever their career stage by delivering high quality, innovative and globally informed careers education.

What can you expect?

As an EMFSS student you are part of a global community, which engages with a range of regional, national and international labour markets. You can expect career and employability support based on:

- your career stage
- where you are based
- what you are studying.

There are many different reasons people choose to study an EMFSS degree.

We offer tailored careers resources, webinars and group career coaching sessions built to your specific career stage and provide opportunities for you to network with peers from different career stages.



As an EMFSS student, you will have access to our digital careers toolbox which includes the following:

- Careers Connect which features a jobs board with opportunities from around the world including internships and graduate roles as well as roles for experienced hires
- live webinars focused on trends within worldwide labour markets and regional job-hunting tips
- Sector Insights panels and Careers Conversations with employers and alumni around the world on a wide range of future of work topics relating to diverse fields of work from finance to policy
- GoinGlobal – a resource containing detailed careers guides, cultural insights and job vacancies in 40+ countries around the world
- exclusive access to AI-informed resources for improving your CV and job application.s

Employability Skills

The University of London Careers Service has identified 10 core employability skills, which an EMFSS degree and the Careers Service will help

you to develop so you can successfully navigate your future career path.

Every EMFSS course you study will be tagged with the core employability skills that you will develop through studying the course content.

You will be able to access dynamic online content from our careers consultants, alumni and employers in a range of sectors around the world in order to explore these skills further.

How can we help you as an EMFSS student to plan the right next steps for your future career?

We offer a comprehensive programme of careers education sessions and resources to support your development in promoting your qualification to employers as well as strengthening your networking skills. Our expert careers consultants also offer:

- bespoke workshops, which include exploring career options with EMFSS students and alumni from around the world
- group career coaching sessions, which provide opportunities for you to benefit from their expertise and experience.

We have designed and produced two career micromodules focusing on Career Planning and Professional Impact, Profile and Success. These can be completed in your own time, at your own pace and will feature on your degree transcript when completed.

Engage with the UoL Careers Service community

You can learn from the career journeys of University of London Alumni by tuning into our Global Careers Calls podcast which features interviews with people working in a range of sectors from across the world.

You can listen now to get inspired by hearing from EMFSS graduates and students developing and changing their careers in countries from Singapore to Uruguay. Once you join our community, sharing your story in a podcast interview is one of the many ways you can get involved and making the most of your EMFSS degree experience.

Fast track to professional accreditation

Graduates on some EMFSS courses are eligible for exemptions when studying for professional accreditations.



- Eligible to claim credit for up to six Professional Stage modules

Students study for the full ACA qualification while in full-time employment. BSc Accounting and Finance graduates can claim credit for up to six Professional Stage modules required for qualification, depending upon the options chosen and grades achieved. Details can be found on their website: apps.icaew.com/cpldirectory



- Eligible to receive up to five exemptions from CIMA's Certificate in Business Accounting and CIMA's Operational Levels for P1 and F1

Graduates who have passed the required specified EMFSS courses are eligible to receive exemptions for CIMA's Certificate in Business Accounting (exemptions being granted for BA1-BA4) and also CIMA's Operational Levels for P1 (Performance Operations) and F1 (Financial Operations) which count towards CIMA's Diploma in Management Accounting: cimaglobal.com

BSc Accounting and Finance graduates

BSc Finance graduates



- Eligible for exemption from certain ACCA modules leading to professional qualification


Graduates from the above programmes who have passed combinations of courses on these degrees are eligible for exemption from certain ACCA modules leading to professional qualification. For further information see: accaglobal.com



singapore QP

- Eligible to qualify for the Singapore Qualification Programme

Graduates of these programmes who pass certain courses as specified by the Singapore Qualification Programme are eligible to apply for exemptions from a number of the Core Syllabus Areas of the Singapore QP Academic Base. More details about the Singapore QP are available at: sac.gov.sg

A close-up portrait of a young man with dark hair and glasses, wearing a white shirt and a dark tie. He is looking slightly to the left with a thoughtful expression. The background is blurred.

'I was always passionate about economics and finance. My EMFSS degree gave me clarity on how to successfully pursue a career in these fields.'

Anish Sharma
Podar World College,
India

A portrait of Dr Francesco Nava, a man with curly brown hair and a slight smile, wearing a grey V-neck sweater over a dark blue collared shirt. The background is a blurred indoor setting with green plants.

Dr Francesco Nava

Academic Director of the University of London Programmes at LSE

'As the Academic Director of the EMFSS degrees, my responsibilities include ensuring that the programmes reflect the latest developments in research, that any developments in LSE's internal degrees are reflected in EMFSS courses, and that delivery of the EMFSS programmes is of the highest standard. Upon graduating from the EMFSS degrees, students will have the knowledge and the skills to succeed in a wide-range of graduate careers or in further academic study. Our aim is to grow through the EMFSS degrees a cohort of leaders which can make a positive difference worldwide.'

EMFSS degree programmes



BSc degrees

EMFSS BSc degrees are typically based on undergraduate degrees taught at LSE. BSc degrees consist of 360 credits (equivalent to 12 full courses) when taken through the Standard Route and 270 credits (equivalent to nine full courses) through the Graduate Entry Route. Courses are classified as either 100, 200 or 300 level, corresponding to standard UK three-year undergraduate degrees.

Degree structure

There are 12 degrees to choose from. All degrees consist of 360 credits and each course is examined, typically by a three-hour, closed book examination (though some courses have additional assessment components). If you already hold a degree from an approved university, you may be admitted

through the Graduate Entry Route and qualify for the award of a degree on the basis of passing 270 credits.

If you already hold a degree from an approved university, you may be admitted through the Graduate Entry Route and qualify for the award of a degree on the basis of passing nine courses.

You may remain registered for a degree for a maximum of six years. Full regulations on all these matters may be found in the programme regulations: bit.ly/EMFSS-ProgRegs

For full information on programme structures, please visit the relevant programme pages at: london.ac.uk/emfss

The EMFSS programme regulations also contain full details on the rules that govern the choice of any course, please see: bit.ly/UoL-Regulations

Available degrees

Accounting, Banking and Finance programmes

- BSc Accounting and Finance
- BSc Finance

Business and Management programmes

- BSc Business and Management
- BSc Management and Digital Innovation

Data Science programme

- BSc Data Science and Business Analytics

Economics programmes

- BSc Economics
- BSc Economics and Finance
- BSc Economics and Management
- BSc Economics and Politics
- BSc Mathematics and Economics

International Relations and Politics programmes

- BSc International Relations
- BSc Politics and International Relations

Accounting, Banking and Finance



About the programmes

These degrees have been developed by LSE academics within the Departments of Finance and Accounting, both of which enjoy pre-eminent reputations for the excellence of their teaching and research.

The structure of the programmes allows you to choose optional courses in related areas which complement the core courses to give well-rounded coverage of the major issues and areas of modern financial and accounting theory and practice.

You will find that the courses have an international flavour, developed in consultation with academics and professionals throughout Southeast Asia as well as the UK and other regions.

This gives your study experience a truly global perspective, broadening your horizons as well as honing your understanding and critical analysis skills of key topics within finance, banking and accounting.

Programmes offered in this area

Degrees

- BSc Accounting and Finance
- BSc Finance

We also offer a Graduate Diploma in Finance. For more information on all available Graduate Diplomas, see page 24.

Where can it lead?

Studying one of our Accounting, Banking and Finance programmes gives you the breadth of understanding and the quantitative skills you need to launch your career into the accounting or finance industry. Take your career in any number of directions, including accountancy, consulting, risk management, investment and commercial banking, sales and trading, or investment analysis and management.

‘What makes the EMFSS degree special is the academic rigour and high standards of excellence that are set by the University of London and LSE.’

Faaiz Kamaldeen
Royal Institute of Colombo,
Sri Lanka

Business and Management



into a multitude of career paths. You can explore the world of consulting, capitalise on your quantitative training in accountancy or banking, or use your skills in any number of firms across the world in general management, marketing or information and innovation management.

About the programmes

These qualifications will prepare you for the demanding and competitive world of business and management. They combine a study of the core social science methodologies with the development of technical skills such as data analysis and presentation, which together provide practically-relevant knowledge and understanding.

You will learn about the political, social and cultural aspects of the business and management environment and acquire the ability to critically assess and challenge ideas, which will be beneficial throughout your career.

Programmes offered in this area

Degrees

- BSc Business and Management
- BSc Management and Digital Innovation

We also offer a Graduate Diploma in Management and a Graduate Diploma in Management and Digital Innovation. For more information on all available Graduate Diplomas, see page 24.

Where can it lead?

The wide-ranging topics you'll study in our Business and Management programmes allow you to springboard



Maurício Vargas Escobar

Universidad Privada Boliviana, Bolivia

'The EMFSS degree is one of a kind and I would recommend it to any student that is looking for a truly global educational experience.'

Data Science



About the programme

The Data Science and Business Analytics degree provides the essential training in probability, statistics, mathematics and computing skills for the visualisation and analysis of large datasets, deriving valuable insights from data. The programme has a strong focus on methodology, but also on applications in finance and economics as well as in business, marketing and beyond. Developed in response to the clamorous demand for data scientists across every business area, these programmes equip students with the knowledge and skills to capture the potential of big data to deliver transformational solutions to real world problems.

Programme offered in this area

Degree

- BSc Data Science and Business Analytics

We also offer Graduate Diplomas in Data Science and Business Analytics. For more information on all available Graduate Diplomas, see page 23.

Where can it lead?

With some analysts predicting a global shortage of data scientists lasting for the next 10 years, graduates from these programmes will be in demand from companies in fields from finance and e-commerce, to health, sport and retail. Students will also gain the knowledge and skills they need to progress in postgraduate study.

The programme balances methodology and application, providing the training needed for employment in numerous fields as a data scientist, analyst or similar.

Students will gain the ability to think critically and independently and develop a range of skills and knowledge that marks them out from the crowd.



Dr James Abdey

Associate Professorial Lecturer,
Department of Statistics

‘Blending quantitative expertise with qualitative insights, graduates of this programme will be among the world’s first in this area due to undergraduate provision of such programmes being in its infancy. With strong employer demand for graduates with these skills, and a limited supply of graduates, students pursuing the degree will surely gain a competitive edge in the labour market.’



Professor Irini Moustaki

Department of Statistics, LSE

'Data science has recently experienced a tremendous growth due to the increasing amounts of large and complex data. As a student, you will be equipped with knowledge and tools in statistics, mathematics and computer science to address real world challenges across multiple sectors, including finance, economics, marketing, insurance, health and beyond. The programme is designed to provide you with strong quantitative skills that are transferable to any substantive area of applications and to make you an independent data analyst who can use the latest statistical software and methods to provide data-driven solutions to business problems.'

My role as an academic coordinator is to provide academic direction for the Data Science and Business Analysis programme. In my job as Professor, I teach modelling for clustered and hierarchical data and survey methodology to postgraduate and undergraduate students from various degree programmes at LSE. For my research I develop statistical methodology applied to psychology, educational assessment, behavioural sciences and social sciences in general.'

Economics

About the programmes

Do you have a passion for making sense of the world's challenges?

These programmes have been designed for those who wish to shape the future of business and society. After completing your studies you will emerge as a well-rounded economist, ready to interpret abstract questions into quantifiable solutions. Join alumni who have gone on to postgraduate studies at some of the world's most prestigious learning institutions and started meaningful careers.

The first year of the programme will give you an introduction to economics and develop your quantitative skills. During the second year you will explore more deeply the three core areas of microeconomics, macroeconomics and econometrics. In your final year, you will study higher-level economics courses but can also select from courses in other key subject areas to help shape the next step in your career.

"Students choosing this programme want to stay close to home, but also get some international exposure and a degree that is widely recognised across the globe and well understood by employers."

Dr Francesco Nava, Academic Director and Lecturer in Economics, Department of Economics, LSE

Programmes offered in this area

Degrees

- BSc Economics
- BSc Economics and Finance
- BSc Economics and Management
- BSc Economics and Politics
- BSc Mathematics and Economics

We also offer a Graduate Diploma in Economics. For more information on all available Graduate Diplomas, see page 24.

Where can it lead?

Many of our graduates have chosen to pursue careers in the financial sector, including positions involving economics research as well as those in banking or hedge funds. Others take up positions as economic or management consultants, join central banks, their home country's government economic service or international organisations.

A significant number choose to go on to graduate study, not just in economics but also in finance, management, development, economic history and other fields. We work to prepare our students who are aiming in this direction to understand the

rewards of engaging in economics research and the benefits of interacting with faculty and industry professionals who are leading economists.



Raimbek Zhalgasbay

Kazakh-British Technical University, Kazakhstan

'With the EMFSS degree, you get access to world-class academics who will provide you with invaluable industry insights that will be of huge benefit to your future career.'

International Relations and Politics



About the programmes

Both programmes develop skills in the analysis of key issues of contemporary society – for example, issues of order and stability, or relating to inequality and injustice. These skills include the ability to read critically and reflect on theories and practices, and to think creatively in order to produce well-crafted essays in your final examinations.

These qualifications allow you to develop an in-depth understanding of a key social science discipline and also take individual subjects from others, so you develop a breadth of knowledge and understanding of the social world.

The degrees allow you to engage with key theoretical ideas in the respective fields; to analyse different types of social and political problems of relevance to the world today; and to form balanced judgements.

Programmes offered in this area

Degrees

- BSc International Relations
- BSc Politics and International Relations

Where can it lead?

These degrees develop intellectual and practical skills that are relevant across a wide range of career opportunities. Our graduates have found work with a huge variety of employers including multilateral and intergovernmental organisations, non-governmental organisations, banking and accounting services, local and national governments, educational establishments, and media and publishing companies.

Others have opted to continue studying these academic disciplines, or have transferred the skills they developed to other disciplines, such as law.

ANASTASIJA'S JOURNEY
STUDY LOCALLY. THINK GLOBALLY.

BSC ECONOMICS AND FINANCE

University of Belgrade, Faculty of Economics and Business

DEGREE HIGHLIGHT

“This degree provided me with the critical skills necessary to pursue my dream of becoming a Valuation Consultant.”

Corporate Finance Analyst, KPMG

DESTINATION

APPLY NOW

Graduate Diplomas



What are they?

The EMFSS Graduate Diplomas are bachelor's, or undergraduate, level qualifications that have been specifically designed for graduates who would like an additional bachelor's level qualification but do not want to commit to a full second degree. They are highly valued by students who want to acquire university level education in a subject that is unrelated to their first degree, either to enhance their employment prospects or to proceed to a postgraduate degree or other advanced qualification.

Graduate Diploma programmes are designed so that they can be completed and examined in a single

year of full-time study. Students can remain registered for the Graduate Diploma for up to five years.

Who are they for?

Graduate Diplomas are sometimes described as 'conversion' diplomas because they allow a student with an undergraduate qualification in one subject to proceed to a master's degree or other postgraduate qualification in another. It is important to understand the specific entry requirements of your desired master's programme.

Universities typically indicate what qualifications, in terms of courses and results achieved, they require, and students should confirm that

the Graduate Diploma could enable them to reach these standards. Mostly universities will want to see evidence of strong results in intermediate or advanced courses, and the structure of the Graduate Diplomas is built around this requirement.

In many subject areas, Graduate Diplomas may also have value in terms of professional development. For example, a business manager with a degree but no background in accounting or information systems can achieve a good understanding of the elements of these subjects in a short space of time.

Available programmes

We currently offer the following Graduate Diplomas:

- Business Analytics
- Data Science
- Economics
- Finance
- Management
- Management and Digital Innovation
- Mathematics*

*Please note, the Graduate Diploma Mathematics is currently not offered at any Recognised Teaching Centre.

Admission

All our Graduate Diplomas include 200 and 300 level courses which students will typically study from the outset. This means that students need to be sure that they are sufficiently qualified to undertake the programme. Given that some of the material covered within the programmes requires subject-specific knowledge, such as the materials typically taught in the first year of a bachelor's degree or equivalent, we have categorised the programmes into three groups:

- **Standard:** these are diplomas requiring only the general standard of an undergraduate degree or equivalent.
- **Standard Plus:** these are diplomas where students are advised to confirm that, through an undergraduate degree or otherwise,

they are familiar with our basic core subjects (economics, mathematics and statistics) to the level of a typical first-year undergraduate course. This is not a formal requirement but students who have no familiarity with these subjects from their first degree are advised to undertake some additional study. These are diplomas in **Business Analytics, Finance and Management**.

- **Technical:** these are diplomas for which a strong background in mathematics/statistics, going beyond the level of upper secondary education, is required. Applicants for these diplomas are expected to have a strong understanding of mathematics and are advised also to have some familiarity with economics. These are diplomas in **Data Science and Economics**.



Phuong Phuong Ha

British University Vietnam,
Vietnam

'I have been very impressed with the holistic and multidisciplinary approach to the social sciences.'

NIGEL'S JOURNEY
STUDY LOCALLY. THINK GLOBALLY.

BSC ECONOMICS AND MANAGEMENT
Royal Institute of Colombo

DEGREE HIGHLIGHT
This degree inspired me to explore the world by pursuing my dream of studying abroad.

DESTINATION
PhD in Education at Harvard University, USA

APPLY NOW

Certificate of Higher Education in Social Sciences (CHESS)

What is CHESS?

Do you have the skills and motivation to study at degree level but your qualifications don't currently meet the BSc entry requirements? Are you looking for a qualification that can be an academic pathway to degree success? Then CHESS may be the right option for you.

An Academic Pathway to the EMFSS BSc Programmes

CHESS is a qualification in its own right that can be studied at one of our Recognised Teaching Centres.

In addition to this, it can serve as an academic pathway you can follow to study BSc programmes in Economics, Management, Finance and the Social Sciences.

If you intend to go on to an EMFSS BSc after completing CHESS, your Recognised Teaching Centre will provide guidance and make sure the courses you study for CHESS are available on the degree that interests you.

This will ensure that you receive credit for the courses you have passed, allowing you to progress on to one of the degrees listed in the

prospectus, subject to the requirements for transfer to BSc found in the EMFSS Programme Regulations.

Features of the CHESS

You take the same courses and sit the same examinations as those offered to BSc students.

- you can complete the CHESS in a minimum of one year and a maximum of three.
- you must pass 120 credits (equivalent of four full courses) in order to be awarded the CHESS.
- you have the flexibility of up to three reattempts.

Further information

Universities in the UK, including LSE, will consider you for entry into the second year of a degree if you pass CHESS with very high marks and have taken the appropriate courses. You will need to apply through UCAS, stating you are applying for second-year entry. Please note that this is extremely competitive.

For full details on how to meet our entrance requirements, including further information on our general entrance requirements, please visit: london.ac.uk/courses





Entrance requirements

Please note: you must study at a teaching centre which has been recognised to teach our programmes, many of which have their own admission criteria. You should contact the Recognised Teaching Centres directly for further information, visit: bit.ly/recognised-centres

All students will need to register at, and pay fees to, a local Recognised Teaching Centre. For full details on how to meet our entrance requirements, please visit: london.ac.uk/courses

	CHES	BSc Degree Standard Entry Route	BSc Degree Graduate Entry Route	Graduate Diplomas
Internet access	✓ Required	✓ Required	✓ Required	✓ Required
Age requirement You must normally* be:	18 years or older before 31 December in the year you first register with the University	at least 17 years old	at least 17 years old	at least 17 years old
English You must provide proof of competence in English which is acceptable to the University (a test of proficiency may be required).	✓ Required	✓ Required	✓ Required	✓ Required
Mathematics You must demonstrate competence in mathematics at least equivalent to UK GCSE/GCE O level in a Mathematical subject at grade C or above.**	✓ Required	✓ Required	✓ Required	✓ Required

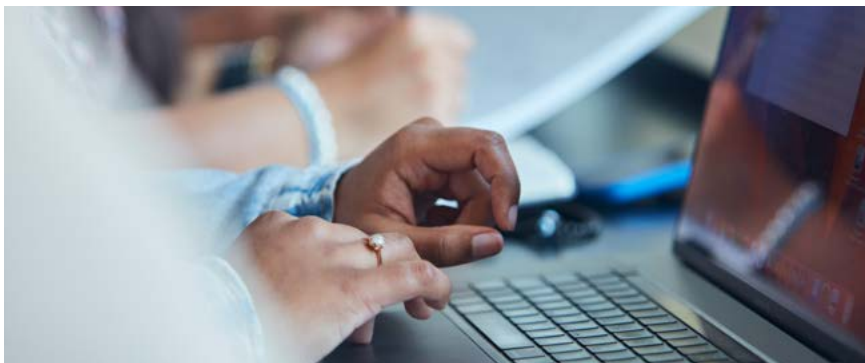
	CHESS	BSc Degree Standard Entry Route	BSc Degree Graduate Entry Route	Graduate Diplomas
Qualifications Note: There are many other qualifications, both from the UK and overseas, that the University of London accepts as satisfying the entrance requirements (for more information on these please see: bit.ly/Gen-Entry-Quals).	As well as the University's requirements listed here, you must also meet our school leaving requirements.	As well as the University's requirements listed here, you must meet our General Entrance Requirements. For full details on how to meet our entrance requirements, including further information on our General Entrance Requirements, UK GCSE/GCE O level equivalents and English language requirements you should visit: london.ac.uk/courses	You must hold an acceptable bachelor's or master's degree which is considered at least comparable to UK FHEQ Level 6 or above; OR An acceptable undergraduate or postgraduate qualification which is considered at least comparable to UK FHEQ Level 6 or above, provided this is at least one-year full time in duration; OR Professional qualifications and professional memberships will be considered on an individual basis.	You must hold an acceptable bachelor's degree*** OR an acceptable master's degree (or any other appropriately accredited Level 7 award) provided this is at least one-year full time in duration; OR an acceptable Level 5 or Level 6 award (such as a HND or Graduate Certificate) provided this is at least one-year full time in duration, plus evidence of at least two years' relevant work experience; OR an acceptable Level 5 or Level 6 award (such as a HND or Graduate Certificate) provided this is at least one-year full time in duration and has been awarded in a relevant field of study

* Applications will be considered from applicants who do not meet the normal minimum age requirement for admission. Each application will be considered on an individual basis, and the decision taken at the discretion of the University of London.

** Applicants applying to the BSc Mathematics and Economics and BSc Data Science and Business Analytics degrees must demonstrate competence in mathematics at least equivalent to UK GCE A level at Grade E or above.

*** Applicants applying for the Graduate Diplomas in Economics and Data Science must have mathematics at degree level standard, for further details please visit: london.ac.uk/emfss

Further information



How to apply

This prospectus provides a summary of information only. We strongly recommend that you visit our website for more detailed information on these programmes before making an application. Visit: london.ac.uk/emfss

Recognition of Prior Learning (RPL), Standard Route only

You may apply for RPL from up to four full 100 courses. You are advised to apply as early as possible if you want to claim RPL exemption from a course. For further information please see: bit.ly/emfss_RPL

For the Graduate Entry Route you can apply for RPL exemption from one full 100 course.

LSE Master's Scholarship for EMFSS Graduates

Are you thinking about studying a master's degree after you graduate? Would you like to study in the heart of London at a world-leading university for the social sciences? Then you may want to consider LSE for your postgraduate studies. EMFSS students who have been accepted onto a master's degree at LSE can apply for a partial scholarship, which is awarded on the basis of academic merit and contributes towards tuition fees.

Fees

The total fee payable to the University of London for 2024–2025 will be published on our website once confirmed. On average, fees incur a five per cent year-on-year increase. For

the latest information on programme fees please visit: london.ac.uk/fees

In addition to the fees payable to the University, you should also budget for the cost of tuition at a Recognised Teaching Centre and the fee levied by your local examination centre.

Please note: student fees shown on our website are net of any local VAT, Goods and Services Tax (GST) or any other sales tax payable by the student in their country of residence. Where the University is required to add VAT, GST or any other sales tax at the local statutory rate, this will be added to the fees shown during the payment process. For students resident in the UK, our fees are exempt from VAT.

Contact us

If you have any questions or would like information about any other programmes we offer, please contact our Student Advice Centre at the address below.

The Student Advice Centre
University of London
Senate House, Malet Street
London WC1E 7HU
United Kingdom
sid.london.ac.uk



The information contained in this prospectus was correct at the date of publication but may be subject to change. The University does not intend by publication or distribution of this prospectus to create any contractual or other legal relation with applicants, registered students, their advisers or any other persons. For the most up-to-date information, please visit our website.

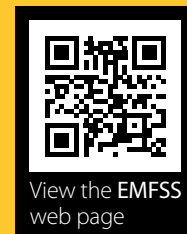
Published by University of London.

**Copyright © University of London,
December 2023.**

For further information on the range of programmes we offer,
please visit our website (london.ac.uk) or contact us at:

The Student Advice Centre
University of London
Senate House, Malet Street
London WC1E 7HU
United Kingdom

Online enquiries: sid.london.ac.uk



This material is available in alternative formats upon request.
Please contact: special.arrangements@london.ac.uk

Follow us on:



london.ac.uk/facebook



london.ac.uk/flickr



london.ac.uk/instagram



london.ac.uk/issuu



london.ac.uk/linkedin



london.ac.uk/twitter



london.ac.uk/youtube

london.ac.uk/emfss