



UNIVERSITY
OF LONDON

2022

Undergraduate programmes in
Humanities

With academic
direction from:

Birkbeck
Goldsmiths
Royal Holloway

london.ac.uk/humanities

World class. Worldwide.

Join the World Class

1 Quality of learning
The programmes in this prospectus are developed by academics from the University of London's Member Institutions, ensuring the world-class quality of the degree.

2 Study without relocating
Fit your studies around your work and your personal commitments. Study wherever you live and at a time that suits you.

3 A mark of excellence
Gain a prestigious qualification from the internationally renowned University of London, which has offered its awards via distance learning since 1858.

4 Employability
Enhance your employability by developing skills such as critical thinking, problem-solving and time management, all of which are highly valued by employers worldwide.

5 Join the World Class
After graduation you become part of our global network of influential alumni, including distinguished academics, writers and Nobel prize winners.

An aerial photograph of London at dusk, with The Shard skyscraper prominently centered. The city lights are visible, and the sky is a mix of purple and orange. A semi-transparent grey box on the right side contains text.

“In a fast changing environment of worldwide access to higher education, a University of London degree continues to offer a guarantee of quality, value and intellectual rigour.”

Professor Wendy Thomson
Vice-Chancellor,
University of London

A global university centred around you

About your qualification

You can choose from different levels of study depending on your circumstances and experience.

Your learning community

- Access a wealth of study resources based on the world-class teaching of University of London academics and experts in the field.
- Participate in a global learning community by connecting online with fellow students worldwide to collaborate and share perspectives.

Value

With no travel, relocation or accommodation costs, studying through the University of London is much more affordable than coming to London to study on campus. What's more, you can continue working.



Contents

Key dates

English programme

Application deadline:
15 September 2022

Registration deadline:
9 October 2022

Programme begins:
October 2022

History programme

Application deadline:
30 September 2022

Registration deadline:
16 October 2022

Programme begins:
November 2022

Philosophy programme

Application deadline:
1 October 2022

Registration deadline:
30 November 2022

Programme begins:
November 2022

Introduction

Join the World Class	2
A global university centred around you	4
Contents	5
Academic direction	6
Programmes available	8
How you study	10
Online support	11

Programmes

English	12
History	14
Philosophy	16

Reference

Entrance requirements	18
Application and registration process	20
Further information	22

Academic direction

The academic direction for the programmes listed in this prospectus is provided by the University of London and its following Member Institutions:



Birkbeck

Since 1823, Birkbeck has reached out to people traditionally excluded by other universities. It is unique in its mission to enable mature students to gain higher education qualifications via part-time study. Today, it is ranked among the leading UK university institutions for its excellence in research in the humanities, social sciences and natural sciences.

- Offers academic direction for Philosophy by distance and flexible learning.



Goldsmiths

Founded in 1891, Goldsmiths is internationally renowned for teaching and research in creative, cultural and cognitive disciplines. Its distinctive attitude to learning encourages students to explore ideas, challenge boundaries, investigate fresh ways of thinking and stretch their minds intellectually and creatively.

- Offers academic direction for English by distance and flexible learning.



Royal Holloway

Royal Holloway has an international reputation for the highest quality teaching and research across the sciences, arts and humanities. Originally colleges for women, Bedford (1849) and Royal Holloway (1886) have continued to grow in size and status since merging in 1985. It is among the top research-led universities in the country with a world-class reputation for developing original research.

- Offers academic direction for History by distance and flexible learning.

A University of London degree

Undergraduate degrees of the University of London are awarded with Honours. The award certificate will indicate the level of the academic performance (Honours) achieved by classifying the award. The classification of the degree will be based on the ratified marks from the completed assessments.

The standard classification system for bachelor's degrees with Honours is:

- First Class
- Upper Second Class
- Lower Second Class
- Third Class

A Pass Degree or Ordinary Degree is a degree without Honours. Specific rules for the classification of awards are given in the Programme Regulations, under Scheme of Award.

Programmes available

Programme	No. of courses	Study period	Key points
CertHE English	4	1–5 years	<ul style="list-style-type: none"> Developed by Goldsmiths, whose Department of English and Creative Writing is ranked in the top 100 of English Language and Literature in the world (QS rankings 2021). The faculty embraces new and traditional approaches to English studies. Provides an opportunity to learn about some of the great literatures of the world. The DipHE and CertHE are qualifications in their own right. You may transfer to the BA once you have successfully completed either.
DipHE English	8	2–5 years	
BA English	12	3–8 years	
Short courses	3	1–2 years	<ul style="list-style-type: none"> You can register for up to three Level 4 courses as short courses.

Programme	No. of modules	Study period	Key points
BA History	12	3–6 years	<ul style="list-style-type: none"> Developed by Royal Holloway, a recognised centre of excellence in teaching and research. Offers a structured route to the past in all its guises, from the fall of the Roman Empire to the civil rights movement in the USA. Provides a greater understanding of history, and trains you to think critically, assess evidence of many kinds and express ideas with precision.
Short course	1	1–2 years	<ul style="list-style-type: none"> You can register for one Stage 1 module on a stand-alone basis.

Programme	No. of courses	Study period	Key points
CertHE Philosophy	4	1–5 years	<ul style="list-style-type: none"> • Developed by Birkbeck, one of the highest ranking Philosophy departments in the UK. • Covers a range of subjects, including: the nature of existence and reality and our knowledge of them; logic and reasoning; the nature of mind, ethics and moral value; the thought of major thinkers including Plato, Aristotle, Descartes, Locke, Berkeley, Hume, Spinoza, Leibniz and Kant; and the philosophy of art and beauty. • The DipHE and CertHE are qualifications in their own right. You may transfer to the BA once you have successfully completed either.
DipHE Philosophy	8	2–5 years	
BA Philosophy	12	3–6 years	
Short course	1	1–2 years	<ul style="list-style-type: none"> • If you would like to see for yourself what the study of philosophy involves, but do not wish to commit to the CertHE, DipHE or BA, you can register for 'Introduction to philosophy' as a short course.



How you study

Flexible study

Our programmes offer you an alternative way of obtaining a prestigious degree or other qualification at a reasonable cost. The University of London allows you to fit your studies around your own schedule and responsibilities.

Time allocation

As a guide, you should dedicate at least 35 hours per week for approximately 34 weeks of the year to your studies if you intend to complete the maximum of four courses in any one year.

Assessment

Assessment varies between programmes but is likely to consist of a mixture of coursework and examinations. Three of our humanities programmes offer you the opportunity to write a dissertation in which you can choose a topic of particular interest to you and study it in depth with one-to-one supervision from a tutor.

The format and mode of assessment for these programmes may change due to events or circumstances beyond our control. Students will be informed of their assessment arrangements via their Virtual Learning Environment (VLE), once confirmed. For the latest information on examinations, please visit: london.ac.uk/exams

Study materials

All four programmes provide you with a dedicated online VLE where you will find a range of study materials.

These vary from programme to programme but are likely to include:

- a welcome and introduction to your programme
- written notes, videos, podcasts, scanned book chapters, past examination papers, subject guides and a range of learning activities
- discussion forums where you will be able to discuss topics of interest with other students.

Specially produced study materials

A study pack is available for some of our programmes. The cost is included in your initial and continuing registration fees (where applicable). These materials are specially produced for self-directed learning by academics appointed by the University of London.

Books

For certain programmes, you will need to purchase your own books. We ensure all key books are widely available either from internet bookshops or by mail order. For more information, visit: bit.ly/uol_study_materials

Library support

The Online Library provides access to over 97 million ejournal articles, a range of ebooks in many subjects, as well as access to a range of databases. For more information visit: onlinelibrary.london.ac.uk

Registered students are entitled to free reference access to Senate House Library. However, there are membership fees payable for those who wish to borrow books. For more information, visit: london.ac.uk/senate-house-library

Additional teaching support

All programmes provide specialist academic tutors to support you online as you study, guide the forum discussions, and provide feedback. Some programmes can be studied at a Recognised Teaching Centre.

The University of London currently works with a growing network of independent teaching centres worldwide that provide tuition support for our students. For further information about recognised centres, including brief profiles and the programmes that they are recognised to teach, please visit: bit.ly/recognised-centres

Online support

The Student Portal

You are required to confirm on your application form that you have access to the internet so that you are able to make use of resources which are only available online. As soon as you have registered, we will send you a University of London username and password that will allow you to log in to the Student Portal. Once logged in, you can also access your University of London email account. All of the online resources available to students can be found in the Portal.

The Virtual Learning Environment

By supporting your studies and helping you to feel part of a community, the VLE forms an important part of your study experience with us. All of the programmes listed in this prospectus are supported by a VLE.

Across all programmes, the VLE allows you to view and download subject guides, access the Online Library, receive notices and other programme-related information, and view past examination papers and Examiners' commentaries. There is also the opportunity to access the online student café forum and interact with fellow students for general chat and student-to-student support.

English

The VLE allows you to:

- take part in e-seminar discussions and access audio lectures
- access student discussion forums for each course.

Study support

To support your studies, you will be assigned a tutor and a tutor group for each Level 4 course. The tutor leads five monthly online discussion forums in which all students are strongly encouraged to participate. Level 4 students will also receive the added benefit of feedback on written work through the submission of a 'formative assessment'.

Level 5 and 6 students will have the option of participating in online e-seminars and submitting up to four practice essays per year for feedback by academic staff.

Additional support and advice will be available from a dedicated Learning Support Coordinator and course convenors, who serve as the first point of contact for course-specific queries.

Supplements to the full subject guides will be provided for Level 4 courses for extra study support and guidance.

Registered students can also obtain general academic advice from the Programme Director at Goldsmiths.

History

The VLE allows you to:

- take part in discussions/seminars with your tutors and other students
- submit and receive feedback on your coursework assignments.

Study support

To support your studies, you will have access to:

- the core textbooks for each module automatically provided to you as part of your module fees
- an online tutor for each module, who will lead seminar discussions and is available to support your module from the time you register through to the examination
- a dedicated Distance Learning Coordinator to provide administrative and technical support.

Philosophy

The VLE allows you to:

- take part in e-seminar discussions
- submit and receive feedback on optional formative assignments.

English



A welcome from Dr Sarah Barnsley, Programme Director

Goldsmiths is proud of its role as Member Institution for the BA, DipHE and CertHE English programmes. Students who have taken this programme worldwide have enjoyed their studies and benefited from the experience, and many have achieved excellent results.

The programme is closely modelled on the full-time students at Goldsmiths. They share the same ethos, which requires you to pursue your own interests and preoccupations, using your initiative and thinking out problems for yourself.

You will receive an excellent education in the discipline, and develop the ability to solve problems, conduct research and write essays in a creative, critical and disciplined manner.

You will also enjoy some of the great literatures of the world in English, immersing yourself in a range of works from classical literature to 21st-century literatures.

Programme overview

The English programme has been developed by Goldsmiths, the UK's leading creative university. Goldsmiths brings creative and unconventional approaches to subjects in the arts, humanities, social sciences and computing, with an emphasis on the highest academic standards of teaching and research.

Goldsmiths' Department of English and Creative Writing is ranked in the top 100 of English Language and Literature in the world (QS rankings 2021).

Features of the programmes

- You will study a range of literary and other works, written in different styles and from different periods; you will develop an awareness of changing rhetorical techniques and effects.
- The study of English is concerned with questions of meaning, social behaviour and structure, as well as with problems of aesthetic and cultural value. Your work directs you towards greater awareness

of the moral and social questions surrounding the techniques through which analysis and persuasion are achieved.

- You will develop a broad range of skills, including general communicative competence, as well as more technical skills of literary-critical analysis.
- The key skills gained should provide a sound basis for a range of careers, including the civil service, teaching, research, media and business.
- The DipHE and CertHE will appeal to two different kinds of student: those who would like a University of London award in English, but do not feel ready to commit to studying for a full degree, and those who do not satisfy the University's entrance requirements for the degree.
- If you obtain the DipHE or CertHE, you may transfer your registration to the BA English and automatically be credited with the courses passed.

Please note: These awards are predominantly concerned with the study of English literature. It is assumed that prospective students will already be fluent in spoken and written English (e.g. an International English Language Testing System (IELTS) overall score of at least 6). The programme contains no element of training in language proficiency.



Programme structure	Level 5 (BA/DipHE only)	
BA: 12 courses	Two courses chosen from:	Language and gender
DipHE: eight courses	Augustans and Romanticism	Language and the media
CertHE: four courses	Literature of the later Middle Ages	Postcolonial literatures in English
Level 4 (all students)	Renaissance and Restoration	Shakespeare
Two compulsory courses	PLUS two courses chosen from:	The Novel
Approaches to text	Creative and Life Writing	
Explorations in literature	Modernism	
PLUS two courses chosen from:	Varieties of English	
Introduction to Creative and Life Writing	Victorians	
Introduction to English language	Level 6 (BA only)	
Renaissance comedy: Shakespeare and Jonson	Four courses chosen from:	
	American Literature	
	Drama since 1860	

Short courses

You can take up to three Level 4 courses on a stand-alone basis. These credit-bearing short courses are an ideal option if you are keen to update your professional knowledge of the subject, enhance your career or sample the programme.

History



A welcome from Dr Catriona Cooper, Programme Director

It's an exciting time to be a historian. Whether your interests lie in the recent or ancient past, close to home or further afield; the past is alive, dynamic, controversial and above all relevant to how we understand and view the world around us. The study of the past can be hugely rewarding whether you just want to know more, explore historical evidence and fact, or understand more about being human.

We hope our enthusiasm and commitment will match your own in studying history with us. We pride ourselves in encouraging your love of history. Our staff will guide you through your studies, building-up your confidence in meeting the challenges of the discipline. We will help you

develop your analytical and reasoning skills; adjudicate between differing academic arguments and uses of evidence; and write in an effective and appropriate style. Studying history makes us more sharply observant and less complacent, providing us with valuable insight into the modern world.

We look forward to you joining our community of scholars in the study of history, and as teachers, watching you thrive as you learn more about the world around you.

Programme overview

In the study of history, we have a record of the infinite variety of human experiences, and in that record we can find ourselves.

Through the study of history, we can master and understand the past, which is key to the understanding of the present. The value of history, then, is that it teaches us what we have done and thus what we are, and possibly influences our future. Essentially, history underpins what we are today.

The BA History offers a structured route to the past in all its guises, from the Romans, the Barbarians and the Vikings to American civil rights, from the Crusades to the use of film and photography as a source for the writing of history in the 20th century.

Features of the programmes

- The programme will give you a greater understanding of history, train you to think critically, assess evidence of many kinds and express ideas with precision.
- History is a multi-vocational degree and can lead to a wide range of career paths.
- In addition to numerous ebooks you will also receive several textbooks during your studies, covered by your module fees.
- Assessment is 80 per cent by exam, 10 per cent coursework and 10 per cent participation in discussion forums.
- Through primary and secondary source analysis you will learn to interpret, analyse and evaluate evidence.
- You will learn to develop independent arguments and present them clearly and persuasively.

Programme structure

BA: 12 modules

Stage 1 (four full modules)

One compulsory half Foundation module

History and meanings

PLUS three half Foundation modules chosen from:

British social and economic history 1945–97

State, society and the individual in the non-western world

‘The camera never lies’: film, photography and history in the 20th century

The Magna Carta and its legacies

PLUS two full Gateway modules chosen from:

Conflict and identity in modern Europe c.1770–2000

Republics, kings and people: the foundations of modern political culture

Rome to renaissance: an introduction to the Middle Ages

The rich tapestry of life: a social and cultural history of Europe c.1500–1780

Stage 2 (four modules)

Three Group A modules AND one Group B module chosen from the list opposite

Stage 3 (four modules)

Two Group B modules AND one Group D* module AND one Group E module

Two Group B modules AND two Group E modules

One Group B module AND one Group D* module AND two Group E modules

One Group B module AND three Group E modules

One Group D* module AND three Group E modules; from the list opposite

*A Group D (dissertation) module can only be selected if the equivalent Group E (examination) module has also been selected.

Stage 2 and 3 optional modules

Group A full modules

Twentieth century world history

British history 1770–1990

From nation state to multiple monarchy: British history 1485–1649

Modern times: international economic history c.1901–1990

US history since 1877

Group B full modules

Communicating history

Ethnicity, identity and citizenship in modern British life

Experience, culture and identity: women’s lives in England 1688–c.1850

Global challenges: historical perspectives on the 21st-century world

Modern political ideas

The Crusades and the eastern Mediterranean 1095–1291

Group D full modules (dissertation)

Blasphemy, irreligion and the English Enlightenment c.1650–1720

Martin Luther King and the civil rights movement in the USA

Politics and society in Palestine from 1900–1948

The clash of powers and cultures: Sino-American relations during the Cold War

Please note: not all modules will necessarily be available in every year.

Group E full modules (examination)

Blasphemy, irreligion and the English Enlightenment c.1650–1720

Martin Luther King and the civil rights movement in the USA

Politics and society in Palestine from 1900–1948

Please note: not all modules will necessarily be available in every year.

Short courses

You can now take the Stage 1 module, ‘The Magna Carta and its legacies’, on a stand-alone basis.

Philosophy



A welcome from Dr Florian Steinberger, Programme Director

Many philosophical questions were first asked in one form or another thousands of years ago. Others are prompted by the latest developments in the arts and sciences. But whether ancient or recent, these questions are fundamental to human existence.

By participating in great philosophical debates, you will develop your skills of rigorous reasoning; by study, analysis and criticism of great works of philosophy, ancient and modern, we hope you will develop your capacity to make reasoned judgements for yourself.

Since reasoned argument is at its heart, it provides excellent training for professional careers. The skills of reasoning, analysis and precision of thought and expression that it develops, transfer to areas such as management and law.

The study materials for the programme have been developed with the needs of students in mind. The subject guides for each course are designed to support independent study, and are written by philosophers who are experts in their fields.

The CertHE Philosophy makes it possible for you to see what is involved in philosophical investigation, without being committed immediately to the longer period of study required for the BA. You can also gain credit towards further study.

The 'Introduction to philosophy' course, which all students study, is intended to provide initiation into the subject.

I welcome you into a study that is rewarding and fascinating at the same time. Whether as a BA, DipHE or CertHE student, I hope you will enjoy your studies with us.

Programme overview

The study of philosophy is the study of questions about knowledge, moral value, art and beauty, mind and world. You will learn how to interpret the contributions to these debates made by Plato, Aristotle, Descartes, Locke, Hume and Kant, as well as those of contemporary philosophers.

You are expected to be able to assess the arguments of others and to formulate your own reasoned

answers to various questions featured in the course. Students on the BA Philosophy programme have the opportunity to write a dissertation under the supervision of one of Birkbeck's expert academics.

Birkbeck's Philosophy Department has an international reputation for research excellence.

Features of the programmes

- The programme provides a thorough grounding in the central areas of philosophy. It introduces historical and contemporary issues in the subject and encourages you to make connections between the ideas and arguments that inform philosophical debates.
- You will study a range of philosophical works from classical times to the present day. Optional courses will enable you to focus on particular interests, such as political philosophy, aesthetics and philosophies of mind and language, among others.
- You will gain an awareness of how the context and terms of philosophical debate change from one generation to another.
- You will develop independence of thought and acquire a broad range of skills, including the ability to analyse complex ideas.

Key points about the CertHE and DipHE Philosophy

- These qualifications are intended to appeal to two different kinds of students: those who want to learn more about philosophy and would like a University of London award in the subject, but do not feel ready to commit to a full degree, and those who do not satisfy the University's entrance requirements for the BA degree.
- If you obtain the CertHE or DipHE Philosophy, you may transfer your registration to the BA and be credited with the courses passed.

Programme structure

BA: 12 courses

DipHE: eight courses

CertHE: four courses

Level 4 (all students)

Four courses

Epistemology

Ethics: historical perspectives

Introduction to philosophy

Logic

Level 5 (BA/DipHE only)

Four courses chosen from:

Ethics: contemporary perspectives

Greek philosophy: Plato and the pre-Socratics

Metaphysics

Methodology: induction, reason and science

Modern philosophy: Descartes, Locke, Berkeley and Hume

Level 6 (BA only)

Three courses chosen from:

Aesthetics

Continental philosophy: Hegel, Schopenhauer and Nietzsche

Greek philosophy: Aristotle

Modern philosophy: Spinoza, Leibniz and Kant

Philosophy of language

Philosophy of mind

Philosophy of religion

Political philosophy

Level 6 (BA only)

Dissertation

Introduction to philosophy short course

If you would like to see what the study of philosophy involves, but do not wish to commit to a CertHE, DipHE or BA, you can register for 'Introduction to philosophy' as a short course. You are required to provide proof of competence in English that is acceptable to the University. You apply online and will have a registration period of two years.

Syllabus

An introduction to the subject matter and methods of philosophy by means of a study of certain fundamental philosophical problems and texts.

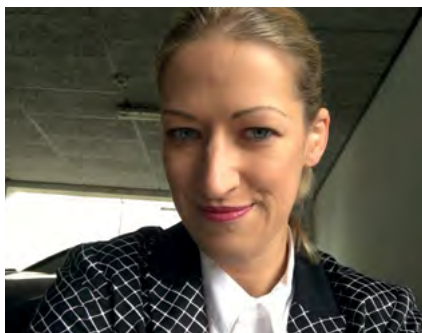
You will sit a three-hour unseen written examination, usually in May.

Progression to the CertHE Philosophy

If you succeed in getting a pass mark of 50 per cent or above, you will be considered for progression to the CertHE Philosophy. If you do progress, you may be credited with the pass in the course, provided that your application is made within three years of completing the course.

If you wish to register for the BA Philosophy or DipHE Philosophy, you must submit a new application and comply with the entrance requirements for that programme.

Entrance requirements



**Michaela
Soos-Kalogeropoulos**

BA History, Germany

'I would recommend distance learning to everyone who wants to study but has a tight work schedule or other obligations which do not allow to study at a "normal" university. The flexibility is fantastic and the degree qualification is absolutely the same as an "on campus" programme.

I feel extremely rewarded after having passed another exam and seeing the goal of graduating coming nearer every year.'

BA and DipHE programmes

You must:

- normally* be aged 17 or above by 30 November in the year of registration **and**
- meet our general entrance requirements **and**
- meet any specific programme requirements where applicable **and**
- meet our English language requirement. We may require a test of proficiency in English.

CertHE programmes

You must:

- normally* be aged 18 or above by 1 September in the year of registration **and**
- have passed at least three separate subjects at GCSE/GCE O level, with grades A to C or the equivalent **and**
- meet any specific programme requirements where applicable **and**
- meet our English language requirement. We may require a test of proficiency in English.

*Applications will be considered from applicants who do not meet the normal minimum age requirement for admission. Each application will be considered on an individual basis and the decision taken at the discretion of the University of London.

Specific programme requirements

BA and DipHE English

You must have a competence at least equivalent to a pass in the UK GCE A level in English.

Further information

For full details on how to meet our entrance requirements, including further information on our general entrance requirements, UK GCSE/GCE O and A level equivalents, specific programme requirements and English language requirements, you should visit: london.ac.uk/applications

Directory of Recognised Teaching Centres: bit.ly/ti_directory

Recognition of prior learning (RPL)

If you satisfy the entrance requirements for the degree you have chosen and are suitably qualified, you may be able to apply for RPL, up to a maximum of 120 credits. Please refer to your individual programme regulations for specific rules governing RPL.

The decision to award credit, known as accreditation of prior learning (APL), is made on an automatic or discretionary basis. Where the decision is automatic, this allows for qualifications or awards already known to the University to

be used as credit against a particular course/module. An academic will have confirmed that the learning outcomes of the prior learning and the course/module associated with your programme are sufficiently similar to grant you credit. You will not need to complete the course/module of your degree programme.

Such qualifications and awards are listed on the programme web page, as well as other conditions for RPL.

The application deadline for seeking RPL is 1 October, although we advise you to apply as early as possible.

Please note, the following programmes do not recognise prior learning:

- Certificate of Higher Education in English
- Certificate of Higher Education in Philosophy
- Diploma of Higher Education in Philosophy.



Application and registration process



Getting started

You must apply online at:
london.ac.uk/humanities

If you intend to study at a Recognised Teaching Centre then you are advised to contact them before submitting your application.

Please read the 'Guidance Notes for Applications' before you complete your application: **bit.ly/UG-guidance**

Stage 1

Submit your online application form and application fee. Please note the application fee is non-refundable.

Stage 2

Submit your documentary evidence. This can be done online when submitting your application or at a later stage. Please see: **bit.ly/Doc-evidence**

Please do not send original documents.

Stage 3

We will contact you by **email** with one of the following:

Offer Letter: if you meet our entrance requirements and we have seen all required documentation, we will send you an Offer Letter.

Request for further information: we might require further documentation/ information before we can confirm if you meet our entrance requirements.

Notification that we have referred your application: if you do not automatically meet our entrance requirements, we will refer your application to the Admissions Panel for individual consideration. The Admissions Panel will consider qualifications which are not published under the Qualifications for Entrance Schedule, incomplete qualifications and substantial relevant work experience. If we cannot accept you with your current qualifications and experience, we will advise you on what qualifications you could take in order to meet our entrance requirements in the future.

Stage 4

Complete the online registration. We explain how to do this in the Offer Letter.

Stage 5

Start your studies. Once you register, you will be given access to the VLE. If your programme provides additional study materials, these will be sent to your correspondence address.

Hong Kong

Applicants living in Hong Kong can apply directly through:

The University of Hong Kong School of Professional and Continuing Education (HKU SPACE)

University of London
(Admissions Office)
3/F, Admiralty Centre
18 Harcourt Road
Hong Kong

Useful information for applicants

You can submit your application even if you are waiting to sit an examination or to receive examination results. We can begin to process your application without all the evidence, although we will not be able to give you a final decision until all the necessary documentation has been received.

If you are unsure about whether or not you meet our entrance requirements, we might be able to advise you on this before you submit your online application. However, due to our increased workload, we are unable to provide this advice between 1 September and 30 October of each year.

Offers are valid for three years.



Benedict Jones

BA English, United Kingdom

‘There were several reasons that I chose this programme and mode of study. Most importantly for me it allowed me to conduct my studies at my own pace and in my own time whilst continuing to work full time.

I found the tutor groups to be helpful and I think that disciplining yourself to study is one of the most important things you need to do to be successful on the programme – you really do only get out what you put in.’

Further information

Fees payable to the University

The total fee payable to the University of London for 2022–2023 will be published on our website once confirmed. For the latest information on programme fees, please visit: london.ac.uk/fees

Please note: student fees shown on our website are net of any local VAT, Goods and Services Tax (GST) or any other sales tax payable by the student in their country of residence. Where the University is required to add VAT, GST or any other sales tax at the local statutory rate, this will be added to the fees shown during the payment process. For students resident in the UK, our fees are exempt from VAT.

Financial assistance

UK undergraduate students may be able to apply for a part-time tuition fee loan to cover the cost of registration and examination entry fees.

For full details on eligibility criteria, please visit: gov.uk/student-finance. Alternatively, some employers in both the public and private sector may be willing to consider offering financial assistance to their employees.

Students with disabilities and/or access requirements

The University of London welcomes applications from disabled students and/or those who have access requirements.

If you are disabled and/or have access requirements, we will make every reasonable effort to meet your needs. This may include making access arrangements for examinations, such as a separate room or special aids. If you would like to tell us about your disability and/or request access arrangements, please complete the relevant section of the application form, or contact the Inclusive Practice Manager at: special.arrangements@london.ac.uk

Armed Forces

Students who are members or ex-members of the UK Armed Forces should note that the University of London has been approved by the Ministry of Defence in support of the Enhanced Learning Credits (ELC) Scheme (ELC Provider Reference Number 1284). The Scheme provides financial support to eligible Service personnel who wish to enhance

their educational or vocational achievements. The ELC Administration Service website can be found at: www.enhancedlearningcredits.com

Other costs

In addition to the fees payable to the University, you should also budget for the cost of:

- purchasing textbooks (for some courses)
- any course or tuition you choose to take (if not provided on your programme)
- the fee levied by your local examination centre.



The information contained in this prospectus was correct at the date of publication but may be subject to change. The University does not intend by publication or distribution of this prospectus to create any contractual or other legal relation with applicants, registered students, their advisers or any other persons. For the most up-to-date information, please visit our website.

Published by University of London.

Copyright © University of London, January 2022.

For further information on the range of programmes we offer, please visit our website (london.ac.uk) or contact us at:

The Student Advice Centre

University of London
Senate House, Malet Street
London WC1E 7HU
United Kingdom

Telephone enquires: +44 (0)20 7862 8360

Online enquiries: sid.london.ac.uk



View the
Humanities
web page

This material is available in alternative formats upon request.
Please contact: special.arrangements@london.ac.uk

Follow us on:



london.ac.uk/facebook



london.ac.uk/flickr



london.ac.uk/instagram



london.ac.uk/issuu



london.ac.uk/linkedin



london.ac.uk/twitter



london.ac.uk/youtube

london.ac.uk/humanities