



UNIVERSITY
OF LONDON

2024

Postgraduate programmes in Laws

With academic
direction from:



Queen Mary
University of London



london.ac.uk/llm

World class. Worldwide.

Join the World Class

1 A mark of excellence
Gain a University of London degree in Postgraduate Laws and boost your career development.

2 Learn from the experts
Your programme is led, taught and assessed by senior professors from Queen Mary University of London and UCL, both of which are ranked in the top 10 Law departments in the UK (2024 QS World University Rankings).

3 Worldwide relevance
Gain advanced knowledge of legal issues for careers in law, government, banking and financial services, national and international corporations, regional and international organisations, shipping, the media, human rights and more. Choose from over 30 specialisations or compile your own combination of courses.

4 Access a wealth of resources
You receive comprehensive Study Guides written by subject experts, as well as access to extensive online learning materials for each course: introductory videocasts, online revision forums, e-materials, e-forums, and e-clinics with the Dean.

5 Flexible learning
With up to five years to complete the programme, you can spread the cost of your degree and continue working full time. And with no relocation costs, studying for a University of London degree by distance learning can represent a more affordable option than studying on campus.



“In a fast changing environment of worldwide access to higher education, a University of London degree continues to offer a guarantee of quality, value and intellectual rigour.”

Professor Wendy Thomson
Vice-Chancellor,
University of London

Your prestigious University of London qualification



About your qualification

When you graduate with a degree from the University of London you will receive two important documents – your Final Diploma (the parchment you receive on graduation) and a Diploma Supplement.

The Final Diploma

- Indicates that you were registered with the University of London and awarded a University of London degree.
- Gives the name of the University of London federation members that developed the syllabus and provided assessment.
- Features the University of London crest and the Vice-Chancellor's signature.

The Diploma Supplement

- Describes the nature, level and content of the programme you successfully completed.
- Includes the transcript of courses taken, marks achieved and overall classification.
- States the role of the University of London federation members and the method of study.



Contents

Postgraduate programmes in Laws

Join the World Class	2
Your prestigious University of London qualification	4
A welcome from Postgraduate Laws	6
Is this programme for me?	8
Your progression through the awards	9
Flexible study	10
Study support	12
Specialisations	13
Courses	14
Entrance requirements	15
How to apply and register	16
Further information	18

Key dates

To sit exams in May

Best to apply before:
30 September (previous year)

Must register by:
10 December (previous year)

To sit exams in October

Best to apply before:
28 February (same year)

Must register by:
15 May (same year)

A welcome from Postgraduate Laws



Professor Helen Xanthaki
Dean
Postgraduate Laws programme

'We are delighted to welcome you to the University of London's Postgraduate Laws programme. Our qualifications are highly desirable and serve as proof of academic excellence. When you join the programme, you become part of an international community of high academic achievers.

Many of you will be seeking to advance your career in law, but some of you will be seeking to develop your career in other professional arenas, such as government, the civil service or the private sector. Our programmes are accessible to law graduates, non-law graduates and anyone with professional experience.

Our programmes are also flexible and can be adapted to the circumstances of each student – from the law graduate wishing to complete the LLM within one year to the non-qualified professional starting on the Postgraduate Certificate and progressing to the LLM in up to five years.

We offer a choice of over 69 courses. You can pursue an LLM degree without specific specialisation or in any one of the 33 specialisations.

I am proud to be directing a unique programme that offers the opportunity to study law at postgraduate level to anyone who is willing and able to put in the hard work required. My team and I are all here to make sure that success can come your way.'



Joanne Tapper
Programme Officer
Postgraduate Laws programme

'I am delighted to have joined the Postgraduate Laws team and to work on a programme with an outstanding international reputation.

I understand both the challenges and the opportunities of distance learning, and look forward to supporting our international community of students whilst they learn flexibly and work hard towards their awards. I am dedicated to facilitating a positive student experience and to being a supportive contact throughout your studies.'

“The School of Law at Queen Mary University of London and the Faculty of Laws at UCL welcome you to our joint online Postgraduate Laws programme awarded by the University of London. Together we offer you academic excellence in 69 fields of law, packaged in a flexible and financially competitive programme. We extend our open access invitation to you: come and join the world class, benefit from an exceptional programme taught by world experts, and entice employers with your achievements.”



Professor Eloise Scotford
Dean of Laws, UCL



Professor Michael Harker
Head of Laws, Queen Mary
University of London



UCL



Queen Mary University of London

Is this programme for me?



Career advancement for law graduates

Law students and professionals study our programme to gain expertise in a specialised field of law, such as commercial law, banking law, arbitration, common law or shipping law. Law firms tend to prefer job candidates with an LLM from a good university because it indicates that they have acquired advanced, specialist legal training and are qualified to work in a multinational legal environment.

Career advancement for non-law graduates

Non-law graduates or experienced professionals pursue an LLM to gain expertise in areas of the law that regulate their current or prospective

careers. Our programme offers 32 specialisations, allowing you to demonstrate a broad awareness of law or specialist knowledge of a specific field – for example: public law for government; medical law and ethics for medics; international law for international or regional organisations; human rights for NGOs; or maritime law for shipping. The choice of courses is extensive and their application to the career market one is of the widest available.

Progression routes

You may enter the programme at one of the three points of entry: PGCert, PGDip, or LLM. Your entry point does not limit your achievement of the LLM. By passing modules, you earn credits that you can use for a PGCert, or a PGDip, or an LLM. You can collect

enough credits to be upgraded to the higher award, or you may stop at an intermediary award. For example, entry to PGCert entitles you to study five modules. Passing those offers you the PGCert or entry to the PGDip. Passing an additional five modules entitles you to the PGDip or entry to the LLM. Passing an additional six modules entitles you to the LLM. You decide where to stop, if at all!

The qualities you need

Our programme is for everyone who has the desire and motivation to study hard and succeed. The programme requires you to be highly motivated and disciplined. You need to be able to master complex problems independently. Some students find such self-directed study challenging, but all agree that it is incredibly rewarding.

Watch our graduates describe their study experiences and how the degree has helped them in their careers.

Alumni inspiration:

Thais bit.ly/alum-thais

Sarah bit.ly/alum-sarah

Donovan bit.ly/alum-donovan

Programme overview:

bit.ly/overview-llm

Hear from more of our graduates:

bit.ly/chose-llm

Your progression through the awards

Structure

You take the following number of courses and modules:

Postgraduate Certificate in Laws

Five modules from up to four courses

Postgraduate Diploma in Laws

10 modules from up to four courses

Master of Laws (LLM)

16 modules to complete four courses

Progression rules

If you begin with the Postgraduate Certificate, you can still progress to the LLM by completing the requirements for each qualification and working upwards. You simply complete the additional modules necessary to achieve the higher qualification, as shown in the adjacent chart.

Please note: you must satisfy the requirements of each qualification for which you are registered before moving on to the next.

An example of how you could progress:

Postgraduate Certificate in Laws to Postgraduate Diploma in Laws to Master of Laws (LLM)

Postgraduate Certificate in Laws: Five modules in total	Module	Course 1	Course 2	Course 3	Course 4
	A				
	B				
	C				
	D				
Postgraduate Diploma in Laws: 10 modules in total	Module	Course 1	Course 2	Course 3	Course 4
	A				
	B				
	C				
	D				
Master of Laws (LLM): 16 modules in total	Module	Course 1	Course 2	Course 3	Course 4
	A				
	B				
	C				
	D				

Flexible study

The postgraduate programmes in Laws are flexible: you are not required to attend online revision sessions (although it is strongly advised that you do), complete assignments or come to London. You can sit your exams wherever you are based and whenever you are ready.

Flexible admissions

You can apply to join at any time of year and start whenever you receive your study materials.

Do I need a degree?

You do not need a law degree to apply: students with a good non-law degree can start on the Postgraduate Diploma and progress to the LLM. Students without an honours degree or without a degree can start on the Postgraduate Certificate. For entrance requirements please see page 15.

Flexible study period

You have between one and five years to complete the LLM or the Postgraduate Diploma; or from six months to five years for the Postgraduate Certificate.

Flexible assessment

Exams are held twice a year online. Each module is assessed by a 45-minute unseen written exam with a choice of questions. You can choose when to be examined on any module, so long as you complete your study within the period of registration.

The format and mode of assessment for this programme may change due to events or circumstances beyond our control. Students will be informed of their assessment arrangements via their Virtual Learning Environment (VLE), once confirmed. For the latest information on examinations, please visit: london.ac.uk/exams

Flexible payment

You do not have to pay in full when you start your first course, unless you wish to. Most students choose the pay-as-you-go option, spreading the cost by paying for each new module in turn.

How many times can I repeat exams?

If you are required to resit a module, you will have one further attempt to pass. If you don't feel ready to sit an exam, you can withdraw by notifying us in advance and you will not lose an attempt. As long as you have not made a first attempt at an exam for a module, you are still able to replace it with another.

How much study time will I need?

It is up to you how you schedule your studies, depending on your work and personal commitments. However, we recommend that you dedicate around 120 hours to each module.

How many modules should I study at one time?

Most students choose to study one course (four modules) every six months. In this way, you can complete the four courses (16 modules) required to complete the LLM within two years.

Is CPD available?

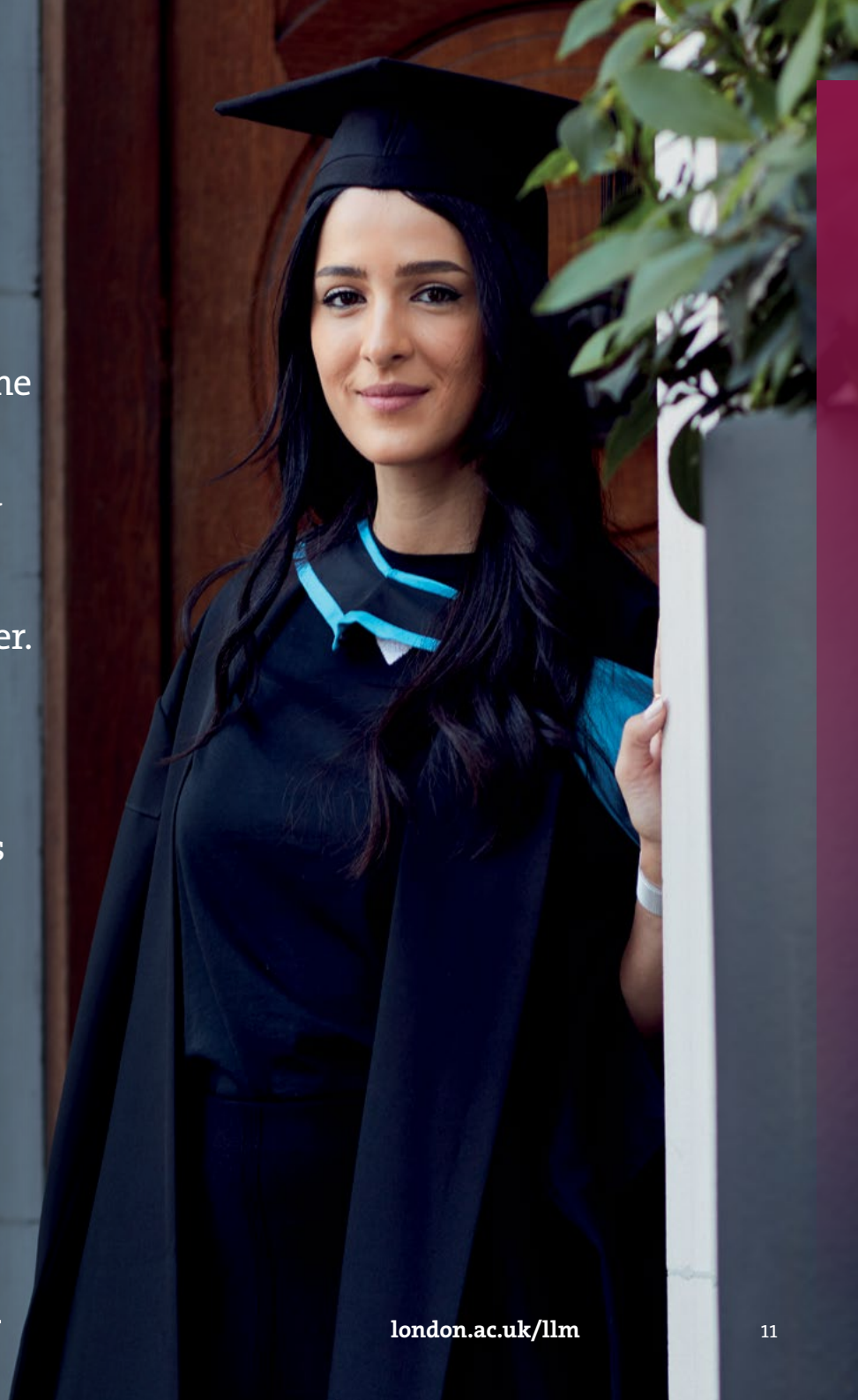
Subject to the regulations of your professional association you may seek CPD points by studying our modules either on the degree or on a stand-alone basis.

You can take up to four credit-bearing modules from the programme on a stand-alone basis. For more information please visit: london.ac.uk/llm

The programme is an Accredited Partner of the Chartered Institute of Arbitrators and students qualifying with certain modules can apply for membership of the CI Arb. For more information please visit the CI Arb website or contact us directly.

“I studied this programme because it complements my law degree and enriches my career. Now that I’ve graduated, my plans are to focus on the development of my career. I would advise people considering a University of London degree to go for it and not even think about time – time passes anyway, so if you start your degree, in no time you’ll be done with it. I would recommend this programme because it’s trustworthy and very up to date.”

Yasmine Safa
Graduate, Lebanon

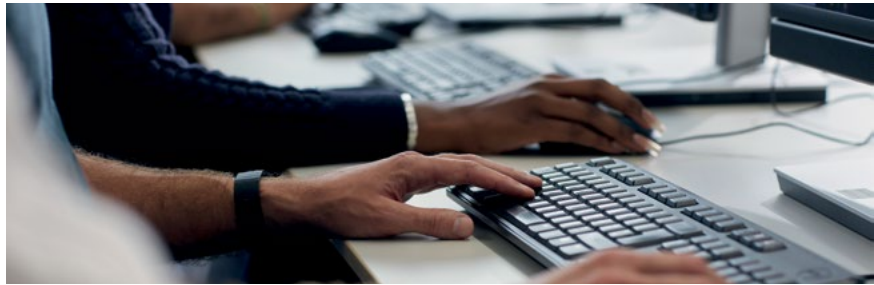


Study support

Study support and materials

This is a programme of independent study. To improve and aid your study experience, extensive study materials are provided, including:

- a comprehensive Skills Guide
- e-textbook(s) and online essential readings for each course
- e-Study Guides written for distance learning purposes, often by the author of the textbook and updated annually
- past examination papers, sample scripts and Examiners' commentaries, all available on our Virtual Learning Environment (VLE)
- Postgraduate Laws Programme handbook containing information and advice that is specific to your studies
- Regulations containing full details of syllabuses, programme structures and assessment
- monthly vlogs, Ask Me Anything forum, and weekly one to one appointments with the Dean and the Programme Officer
- Student Café where students can discuss issues and learn from peers.



The Virtual Learning Environment (VLE)

The VLE is integral to your study experience, providing:

- an induction module which covers the regulations, methods of study and examination skills
- online introductory videos from the lead academic on each course; plus an online revision forum with the academic tutor of each course; plus reading materials
- extensive Online Library resources: onlinelibrary.london.ac.uk/resources
- more than 10 legal databases including LexisNexis® and Westlaw® and other databases of business, management, economics and scholarly materials.

Summer course

Prospective and registered students may attend our two-day summer course at UCL or Queen Mary London campuses. You would need to budget for the cost of the course and any travel or accommodation while in London.

The summer course allows students to attend lectures from their Professors at UCL or Queen Mary Law schools, build on exam techniques, meet the Dean and network with other students and academics from the programmes.

Additional educational support

Some students may choose to access additional tuition support at a recognised teaching centre. For further information about recognised centres, including brief profiles and the programmes that they are recognised to teach, please visit:

bit.ly/recognised-centres

Specialisations

You don't have to specialise but if you would like to become a specialist in a particular field of law, you'll need to follow specific courses.

The specialisation will be named on your final certificate for the award; for example, the 'Master of Laws (LLM) in the specialisation: international business law'.

To have a specialisation named on your certificate, you need to complete a certain number of courses or modules within that specialisation: at least three full courses for the LLM, at least eight modules for the Postgraduate Diploma in Laws or at least four modules for the Postgraduate Certificate in Laws.

Please note: throughout your study on the programme, you can only select modules from up to four courses. See page 14 for a list of courses.

You can specialise in any of the following areas:

1. Banking and finance law	18. Intellectual property law
2. Commercial and corporate law	19. International business law
3. Common law	20. International criminal justice
4. Comparative and foreign law	21. International dispute resolution
5. Competition law	22. International intellectual property law
6. Computer and communications law	23. International justice
7. Corporate and securities law	24. Law and development
8. Criminology and criminal justice	25. Legal theory and history
9. Economic regulation	26. Maritime law
10. Environmental and natural resources law	27. Media law*
11. Equity and trusts	28. Medicine and the law*
12. European law	29. Procedural law
13. Family law	30. Public international law
14. Financial sanctions**	31. Public law
15. Financial services law	32. Sports law**
16. Human rights law	33. Tax law
17. Insurance law	

*Only available for PGCert and PGDip.**Only available for PGCert.
For examples of specialisations please visit: london.ac.uk/llm

Courses

For the full list of syllabuses for each course, please visit the course web pages: london.ac.uk/llm

Admiralty law	Intellectual property and medicine	Law of international finance: syndicated loans
Advanced contract law	Intellectual property and sport	Law of international project finance
Advanced torts	Intellectual property on the internet	Law of international taxation
Applicable laws and procedures in international commercial arbitration	International and comparative bank regulation	Law of treaties
Carriage of goods by sea	International and comparative competition law	Law on investment entities
Commercial banking law: bank–customer relationship	International and comparative law of copyright and related rights	Legislation and statutory interpretation
Commercial trusts law	International and comparative law of patents, trade secrets and related rights	Marine insurance law
Comparative criminal justice policy	International and comparative law of trade marks, designs and unfair competition	Maritime dispute settlement*
Constitutional and institutional law of the European Union	International and comparative trust law	Medical law and ethics
Corporate finance and management issues in company law	International commercial insurance law	Multinational enterprises and the law
Corporate governance and compliance	International criminal law	Private international law in international commercial litigation
Derivatives law	International economic law	Private law aspects of the law of finance
Equity and trusts in context	International environmental law	Regulation and infrastructure of international commercial arbitration
European Convention on Human Rights	International investment law	Russian law and legal institutions
European internal market	International law of the sea	Securities law
European Union competition law	International merger control	Taxation principles and policy
External relations law of the European Union	International natural resources law	Telecommunications law
FinTech: law and regulation	International refugee law	Transfer of technology law
Foundational and constitutional issues in company law	International rights of the child	United Nations protection of human rights
Franchising law	International trade law	Western European legal history
Human rights of women	Jurisprudence and legal theory	World trade law
Industrial and intellectual property	Law and policy of international courts and tribunals	Youth justice
Insurance law (excluding Marine insurance law)	Law of financial crime	

*Cannot be taken in conjunction with *International law of the sea*.

Entrance requirements



Am I eligible?

To register for the LLM degree, Postgraduate Diploma in Laws or Postgraduate Certificate in Laws, you must satisfy our entrance requirements. These can be satisfied through a wide variety of qualifications from around the world. Relevant work experience can also be considered for entry. For further details please visit our LLM web page: london.ac.uk/llm

Progression

Once you have passed the five modules for the Postgraduate Certificate, you will automatically be eligible for progression to the Postgraduate Diploma. Similarly, once you have passed the 10 modules for the Postgraduate Diploma, you will automatically be eligible for progression to the LLM.

Recognition of prior learning (RPL)

If you have obtained credit for postgraduate law modules/courses or the Bar, you may be considered for RPL. Applicants for the Postgraduate Certificate in Laws may request RPL for no more than one module, applicants for the Postgraduate Diploma for no more than three modules (which must normally be from the same course), and applicants for the LLM for no more than five modules (four of which must normally be from the same course).



Frank George Mgungwe

Alumnus, Malawi

‘Aside from earning a prestigious qualification, I have made many networking friendships with many people from all corners of the globe which would not have been possible without being a student of the University. I have also acquired solidly exceptional skills in independent study. This will enable me to easily excel in my PhD, which I also plan to embark on in the near future.’

How to apply and register

“This programme allows me to balance study and professional commitments side by side. Not only has it allowed me to see my work from a different point of view, but it has added a whole new level of skills.

With multiple options to choose from, the modules are discipline-friendly. The highlight of this programme is that you can obtain a world-class degree at your doorstep, provided you put in the effort. ”

Fatima Khalid Gill
Current student, Pakistan

Getting started

You must apply online at:
london.ac.uk/llm

Please read the ‘Guidance notes for postgraduate applications’ before you complete your application.

Stage 1

Submit your online application.

Stage 2

Submit your documentary evidence. This can be done online when submitting your application or at a later stage. Please visit:
bit.ly/supply-evidence

Please do not send original documents (scanned copies are acceptable).

Stage 3

We will notify you whether or not you have been accepted.

Please note: applications will only be considered when we have received all the necessary documentation, including the references, where applicable.

Stage 4

Complete the online registration. We explain how to do this in the Offer Letter.

Stage 5

Start your studies. You will be given access to the VLE and your study materials once you have registered.

Useful information for applicants

Submit your application even if it is incomplete (for example, if you are waiting to sit an examination or to receive examination results). Do not delay – we will be able to formally advise if you will meet our entrance requirements once you have completed an outstanding examination.

If you are unsure on whether or not you meet our entrance requirements, we might be able to advise you before you submit your online application. However, due to an increase in our workload we are unable to provide this advice during September and October each year. Please visit: **sid.london.ac.uk**



Sayaka Maeda

Current student, Japan

'I work in international development, and I found it very interesting and rewarding to understand human rights and other social issues from a legal perspective; this has allowed me to think and understand the issues from a more holistic viewpoint. The ability to choose from varied and extensive modules appealed to me. I would recommend this programme to prospective students who are curious to broaden their academic horizons.'

Further information

Fees

The total fee payable to the University of London will be published on our website once confirmed for the academic year. On average, fees incur a five per cent year-on-year increase. For the latest information on programme fees, please visit: london.ac.uk/fees

Please note: student fees shown on our website are net of any local VAT, Goods and Services Tax (GST) or any other sales tax payable by the student in their country of residence. Where the University is required to add VAT, GST or any other sales tax at the local statutory rate, this will be added to the fees shown during the payment process. For students resident in the UK, our fees are exempt from VAT.

Financial assistance

Some employers in both the public and private sector may offer financial assistance to their employees. No financial assistance is available from the University.

Bursaries

For newly registered students:

All University of London LLB alumni can receive a 30 per cent bursary for their LLM programme fees.

For all applicants residing in **Pakistan, Bangladesh or Malaysia** a 40 per cent bursary for the LLM is available.

The bursary, which can also be applied to individual LLM modules, can be requested as part of the application process.

Please note: that the bursary only applies to University of London programme fees and will not apply to additional costs such as local examination centre fees, teaching centre fees or any other costs not directly payable to the University. Local examination centre fees may vary by centre. Terms and conditions apply.

Students with disabilities

The University of London welcomes applications from disabled students and/or those who have access requirements.

If you are disabled and/or have access requirements, we will make every reasonable effort to meet your needs. This may include making access arrangements for examinations such as a separate room or special aids. If you would like to tell us about your disability and/or request access arrangements please complete the relevant section of the application form, or contact the Inclusive Practice Manager at: special.arrangements@london.ac.uk

Armed Forces

Students who are members or ex-members of the UK Armed Forces should note that the University of London has been approved by the Ministry of Defence in support of the Enhanced Learning Credits (ELC) scheme (ELC Provider Reference Number 1284). The Scheme provides financial support to eligible Service personnel who wish to enhance their educational or vocational achievements. The ELC Administration Service website can be found at: www.enhancedlearningcredits.com



Connect with us online



facebook.com/University.of.London.PGLaws
Used by current and prospective students, this provides news, developments and details of the Dean's scheduled LLM seminars.



youtube.com/LondonLLM
Videos about the LLM programme and some of the courses available.

The information contained in this prospectus was correct at the date of publication but may be subject to change. The University does not intend by publication or distribution of this prospectus to create any contractual or other legal relation with applicants, registered students, their advisers or any other persons. For the most up-to-date information, please visit our website.

Published by University of London.

Copyright © University of London,
November 2023.

For further information on the range of programmes we offer, please visit our website (london.ac.uk) or contact us at:

The Student Advice Centre

University of London
Senate House, Malet Street
London WC1E 7HU
United Kingdom

Telephone enquires: +44 (0)20 7862 8360

Online enquiries: sid.london.ac.uk



View the LLM
web page

This material is available in alternative formats upon request.
Please contact: special.arrangements@london.ac.uk

Follow us on:



london.ac.uk/facebook



london.ac.uk/flickr



london.ac.uk/instagram



london.ac.uk/issuu



london.ac.uk/linkedin



london.ac.uk/twitter



london.ac.uk/youtube

london.ac.uk/llm