



UNIVERSITY
OF LONDON

2023

Postgraduate programmes in

Supply Chain Management and Global Logistics

With academic
direction from:

CITY
UNIVERSITY OF LONDON
— EST 1894 —

london.ac.uk/supply-chain

World class. Worldwide.

A University of London degree from anywhere in the world

1 **Flexible learning options**

Select the programme pathway that suits your needs and interests. You can study at your own pace, enabling you to schedule your studies around your work commitments. You have between one and five years to finish your MSc.

2 **Stimulating and rewarding**

You'll have access to a resource-rich online learning environment which includes videos, digital presentations and key concept animations. Online tutors and Student Relationship Managers will support you every step of your journey.

3 **Contemporary and informative**

You'll explore the potential of new technological developments, including artificial intelligence, blockchain technology, big data analytics and automation. Live issues, such as risk mitigation, sustainability and ethics will be covered across the modules.

4 **Business relevant**

The curriculum was developed as a result of in-depth research carried out by Bayes Business School (formerly Cass) – part of City, University of London – on the skills required by companies to successfully lead and manage supply chains.

5 **Update yourself in specialist areas**

You can opt to study a specialist Postgraduate Certificate in as little as a year and enhance your skillset in areas such as supply chain analytics and strategic supply chain management.

Contents

Postgraduate programmes in Supply Chain Management and Global Logistics

A flexible MSc by a world-class institution	4
City, University of London	5
Online and flexible learning explained	6
Take your career to the next level	10
Entry requirements	12
About your qualification	13
Fees and funding	14

Key dates

April intake

Applications open:

19 December 2022

Applications close:

13 March 2023

Registration closes:

27 March 2023

Programme starts:

17 April 2023

A flexible MSc by a world-class institution

The MSc Supply Chain Management and Global Logistics, from the University of London, will help advance your skills as a manager. You will study the latest industry trends and analyse real-life case studies to build the strategic and analytical skills for your future career.

A trusted name in global education

Founded in 1836, the University of London is one of the oldest and most prestigious universities in the UK. In 1858, we made our degrees available to study anywhere in the world.

Among former students are six Nobel Prize winners, including Nelson Mandela and Charles Kao who is a pioneer in the development of fibre optics. Graduates have made, and continue to make, significant contributions to the fields of science, literature and politics.

London made global

The MSc Supply Chain Management and Global Logistics is an innovative online distance learning programme. The University of London works in partnership with City, University of London, who are responsible for the academic direction of this programme. Academics from City's prestigious Bayes Business School (formerly Cass) develop the course materials, keep the content up-to-date and set the assessments. Bayes Business School leads on the academic management of the programme.



City, University of London

Academic direction is provided by Bayes Business School (formerly Cass), one of the world's leading business schools and part of City, University of London.

The School has been at the forefront of business education for over 50 years. Located in the heart of one of the world's leading financial centres, it is part of an elite group of business schools to have been awarded triple accreditation by the Association to Advance Collegiate Schools of Business (AACSB), the Association of MBAs (AMBA) and the European Quality Improvement System (EQUIS).

Its master's courses are academically rigorous and characterised by a real-world approach that ensures graduates are prepared for top-flight careers in their chosen fields. Industry bodies accredit many of the courses, offering a quick route into professional qualifications.

The School's faculties maintain close links to industry, with many of their academic staff having worked or consulted in their specialist sectors.





Online and flexible learning explained

You can set your own pace for this programme and can complete it in a minimum of one year (MSc only) and a maximum of five years. Depending on your needs, you can adjust the number of modules you study each session.

Fit your studies around your schedule

Each module, with the exception of the Final Project, requires 150 hours of study time. This typically works out at five to seven hours of study per week over the 22-week session. You can study up to six modules at a time or four modules plus the Final Project. The programme has two entry points each year (April and October) and you can start at either time.

Study materials

When you register, we provide you with all of the resources and study materials you need to complete the programme successfully. You can access these on computers, tablets and other mobile devices through your Virtual Learning Environment (VLE).

You'll be able to engage with course materials for each module including videos, exercises and discussion forums, with supervision from established academics. The VLE also contains tools that will allow you to monitor your progress and log your development.

You can study for this programme online or with support from one of our Recognised Teaching Centres, for more information visit: london.ac.uk/supply-chain

Guaranteed tutor support

All students receive tutor support and feedback while studying this programme. Tutors introduce the modules, respond to queries, monitor discussions and provide guidance on assessments.

You register for modules as a web-supported learner, unless you are studying with a Recognised Teaching Centre. You become a member of an online group, which is facilitated by a tutor who provides support via discussion groups and regular messages to keep you on track.

Build up your qualifications

The flexible nature of the programme means that you can choose to study for an MSc, Postgraduate Diploma or Postgraduate Certificate.

If you do not meet all of the MSc entry requirements, the Postgraduate Certificate also offers you an alternate route into the programme. Once you have successfully completed this, you can study for the Postgraduate Diploma and then the MSc.

“This programme aims to provide a 360-degree perspective. This will equip students with the ability to identify opportunities and risks in global supply chains as well as the strategy, technology and analytics knowledge to manage them.

We follow a balanced approach of up-to-date supply chain knowledge, distinct understanding of related disciplines such as finance, strategy or innovation as well as technology and leadership skills.”

Dr Jörg Ries – Joint Programme Director for the MSc Supply Chain Management and Global Logistics



Jörg Ries is a Senior Lecturer in Operations Management at Bayes Business School (formerly Cass) City, University of London and a

member of the Digital Leadership Research Centre and the Data Science Institute. Before joining City, Jörg was a visiting research fellow at Cranfield School of Management and a research assistant at Technical University Darmstadt, where he completed his PhD. He also worked as a supply chain consultant in the chemical and industrial construction industry.

His research focuses on the development and application of predictive and prescriptive analytics in supply chain management, including: the exploration of text analytics and artificial intelligence as enabler for smart supply chains; the analysis of supply chain finance solutions with a strong focus on process automation and optimisation; as well as the development of sustainable supply chain operations. On these topics he has published in leading international journals such as *International Journal of Operations and Production Management*, *European Journal of Operational Research*, *Omega*, and others.

In addition, the Postgraduate Certificate allows you to specialise your knowledge, by focusing on strategic supply chain management or supply chain analytics.

Assessment

The format and mode of assessment for this programme may change due to events or circumstances beyond our control. Students will be informed of their assessment arrangements via their Virtual Learning Environment (VLE), once confirmed. For the latest information on examinations, please visit: london.ac.uk/exams

Celebrate your graduation

When you complete your qualification, you will receive an official University of London award. You will be invited to attend the annual graduation ceremony in London, which is usually presided over by the University of London's Vice-Chancellor or the Chancellor, HRH The Princess Royal.

“Intensified offshoring and outsourcing have transformed the way companies operate. The management of global and complex supply chains has become critical for creating customer value and sustainable competitiveness.

With global operations becoming more complex, companies in manufacturing, retail, technology and consultancy are scrambling to hire people with supply-chain expertise. But these experts are hard to come by.”

Dr Byung-Gak Son – Joint Programme Director for the MSc Supply Chain Management and Global Logistics

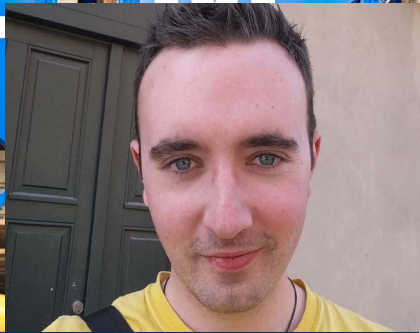


Byung-Gak Son is a Senior Lecturer in Supply Chain Management at Bayes Business School (formerly Cass), City, University of London. He obtained his PhD

in Managing Buyer–Supplier Relation Performance on the Retail Industry from the Bayes Business School.

His research interests include: buyer–supplier relationship management; outsourcing and offshoring management; human aspect of supply chain management; and supply risk management. Recent projects he has conducted involve the role of structural embeddedness of the supply and board network in responding to delay and disruption.

His work has been published in top international journals, such as *Journal of Operations Management* and *Production and Operations Management*. He has also carried out consultancy work for the Korean Ministry of Foreign Affairs and Korea Trade-Investment Promotion Agency.



Chris O'Connor United Kingdom

One of the best things about studying this programme is the vast diversity of my fellow students. This alone has allowed for really getting to know the subject and its nuances in different industries globally, as well as making for a culturally exciting class! This in addition to the excellent flexibility of study options, and the added bonus of having much fairer student fees compared to most institutions, makes this an exceptional course.

Take your career to the next level

Throughout your MSc you'll have the opportunity to network and collaborate with your peers from across the globe. Using online discussion forums, you can share learning and ideas with other students and academic staff, directly involved in industry-relevant initiatives and ventures.

Global insight

You will be given valuable insights into international business trends that shape global supply chains and how they may impact your company. In turn, this could help with the expansion of your business.

Your MSc project gives you the opportunity to undertake a 'consultancy' on a complex problem within your organisation, for example, you can undertake a consultancy benefiting both your workplace and your career.

You'll be kept up to date on the key trends and innovations within supply chain management, including data analytics and the use of advanced technologies.

We recently launched a webinar series entitled Our Thinking Supply Chain which offers bite-sized insights on how to shape supply chains in the future. The topics covered range from technological and process innovations over new managerial challenges to external factors affecting global supply chains. We will also shed light on career and professional development opportunities available through the Supply Chain Management and Global Logistics programme.



Programme structure

To complete the MSc you will need:

Eight core modules (120 credits)

Two optional modules (30 credits)

Final Project (30 credits)

Core modules:

Core Concepts of Supply Chain Management

Supply Chain Analytics

Operations and Process Management

Accounting for Decision Makers

Strategy for Delivering Value

Global Purchasing and Supply Management

Innovation and Supply Chain Technology

Global Logistics and Transport Management

Plus any two optional modules from the list below:

Business Forecasting and Data Analytics

Supply Chain Finance and Risk Management

Business to Business Marketing

Plus:

Final Project

For the **MSc, Postgraduate Diploma and Postgraduate Certificate**, you can study the modules in any order. If you're studying the MSc, it is advisable to have completed the assessments for the core modules before registering for the Final Project.

To achieve a **Postgraduate Diploma in Supply Chain Management and Global Logistics** you must successfully complete a total of eight modules – six core modules, one of which must be in Core Concepts of Supply Chain Management, plus two further modules, which can be either core or optional.

To achieve a **Postgraduate Certificate in Supply Chain Management**, you must complete four modules. All modules are available for you to select, but you must study at least one of the following – Core Concepts of Supply Chain Management; Supply Chain Analytics; Global Purchasing and Supply Management; Innovation and Supply Chain Technology; Global Logistics and Transport Management; and Supply Chain Finance and Risk Management.

To achieve a **Postgraduate Certificate in Supply Chain Analytics**, you must complete four modules – Core Concepts of Supply Chain Management; Operations and Process Management; Supply Chain Analytics; and Business Forecasting and Data Analytics.

To achieve a **Postgraduate Certificate in Strategic Supply Chain Management**, you must complete four modules – Core Concepts of Supply Chain Management; Strategy for Delivering Value; Global Purchasing and Supply Management; and Accounting for Decision Makers.

Upon successful completion of a Postgraduate Diploma, students can progress to complete the remaining modules and gain an MSc. Successful completion of a Postgraduate Certificate will allow you to progress to the Postgraduate Diploma.

For further details on programme specifications and module outlines, please see:

bit.ly/Supply-Chain-modules

Entry requirements

What qualifications do you need?

MSc and Postgraduate Diploma:
a first or second-class bachelor's degree (or an acceptable equivalent) preferably in a quantitative subject, or

If you do not hold a bachelor degree then you might be eligible for either our 'Work Experience Entry Route' or 'Progression Route', provided you have relevant work experience. Each application is considered on an individual basis. Further details about these routes, including required length of work experience can be found at: london.ac.uk/courses/supply-chain-management#entry-requirements-10593

Applicants who wish to apply for the MSc or Postgraduate Diploma but do not meet the above admission criteria, can still pursue these degrees through the **Progression Route** providing that they have two years minimum work experience in a relevant field.

Postgraduate Certificate:

A first or second-class bachelor's degree (or an acceptable equivalent) preferably in a quantitative subject, or

Two years minimum work experience in a relevant field, operations, manufacturing, supply chain management, logistics, procurement,

retail, transportation, import/export, humanitarian SCM or similar.

Any appropriate professional awards from a recognised SCM/logistics or similar professional body will be considered on an individual basis.

If your first language is not English, you'll be required to show evidence of your English language skills.

This can range from an IELTS test score to evidence that you have undertaken substantial education or work experience in English. For more information on entry requirements, please visit: bit.ly/SCM-entry-reqs

Recognition of prior learning

Recognition of prior learning is where we accept a qualification in place of one (or more) modules of the MSc, so you don't need to take them as part of your degree. If your prior learning is recognised, you could complete the MSc more quickly by studying fewer modules.

How we recognise prior learning

We recognise qualifications automatically if we have already confirmed that they meet the learning outcomes of a particular module or set of modules. For qualifications we have not reviewed before, any recognition is classed as discretionary. If you believe a qualification you hold reflects similar learning outcomes to certain MSc modules, you can apply for this to be recognised.

Automatic recognition of prior learning

There are certain qualifications (such as CIPS level 6) for which we recognise prior learning automatically. If you satisfy the conditions, complete the relevant section of the online application form and supply the necessary evidence.

You must have passed the relevant listed qualification(s) in full within the five years preceding your request for accreditation. If your qualification was obtained more than five years ago, you may be considered for discretionary accreditation of prior learning. For more information please visit: bit.ly/SCM-entry-reqs

About your qualification

When you graduate, you receive your Final Diploma and a Diploma Supplement.

The Final Diploma includes the following information:

- you were awarded a University of London degree, diploma or certificate
- City, University of London was your education provider
- the University of London crest and the Vice-Chancellor's signature.

If, for any reason, you are unable to finish your MSc or Postgraduate Diploma programme, an exit award (i.e. a Postgraduate Certificate or Postgraduate Diploma) may be granted for the successful completion of 60 or 120 credits respectively. All exit awards are granted at the discretion of the exam board.

The Diploma Supplement includes the following information:

- the award you successfully completed
- your transcript of modules taken, marks achieved and overall classification
- the role of City, University of London.

Distance and flexible learning qualifications are not always recognised by every country's authorities or regulators when it

comes to employment or further study. It is advisable to check the recognition status of this degree in your country of study before enrolling on the programme.

Accreditation

This programme is accredited with two world renowned professional bodies.

CIPS accreditation



If you successfully complete the MSc, you may be eligible to apply for MCIPS, a globally recognised standard for procurement and supply management provided by the Chartered Institute of Procurement and Supply (CIPS).

In addition, MSc programme students are also eligible for complementary student membership of CIPS with access to a range of industry-relevant resources and opportunities to join specialist networks and attend events.

CILT accreditation



The Chartered
Institute of Logistics
and Transport

Accredited Degree

If you successfully complete the MSc programme and have the relevant work experience, you will be eligible for full membership by the Chartered Institute of Logistics and Transport (CILT) and can use the CMILT designation.

CILT Accreditation provides this MSc programme with a universally recognised stamp of approval, and therefore a competitive advantage within the industry.



Fees and funding

Gain a prestigious University of London qualification at outstanding value.

The degree fee varies depending on a number of factors, which include:

- where you live
- whether you receive online or face-to-face tutor support.

Our module fees include access to study materials and entry into assessments, but not the fee for sitting exams. All exam fees should be paid directly to your local exam centre. More details are available at: london.ac.uk/fees

The total fee payable to the University of London for 2023–2024 will be published on our website once confirmed. On average, fees incur a five per cent year-on-year increase.

For the latest information on programme fees, please visit: london.ac.uk/fees

Please note: student fees shown on our website are net of any local VAT, Goods and Services Tax (GST) or any other sales tax payable by the student in their country of residence. Where the University is required to add VAT, GST or any other sales tax at the local statutory rate, this will be added to the fees shown during the payment

process. For students resident in the UK, our fees are exempt from VAT.

Employer sponsorship

If you're employed and wish to apply for this programme, your employer may be willing to help with the cost.

Our online programmes are ideal for employers because they can retain you as an employee, while they benefit from the additional skills you bring to the workplace.

However, it is important to make a compelling case for the expense and any additional flexibility you may need. Our template and guides will help you build this case.

For information about the University of London and the benefits of sponsorship visit: london.ac.uk/employers

Postgraduate master's loans

The UK government is now providing loans worth £10,600 for students based in England who wish to begin their first master's-level programme. The University of London MSc Supply Chain Management and Global Logistics is eligible for this funding.





The information contained in this prospectus was correct at the date of publication but may be subject to change. The University does not intend by publication or distribution of this prospectus to create any contractual or other legal relation with applicants, registered students, their advisers or any other persons. For the most up-to-date information, please visit our website.

Published by University of London.

Copyright © University of London, January 2023.

For further information on the range of programmes we offer, please visit our website (london.ac.uk) or contact us at:

The Student Advice Centre

University of London
Senate House, Malet Street
London WC1E 7HU
United Kingdom

Telephone enquires: +44 (0)20 7862 8360

Online enquiries: sid.london.ac.uk



View the
Supply Chain
Management
web page

This material is available in alternative formats upon request.
Please contact: special.arrangements@london.ac.uk

Follow us on:



london.ac.uk/facebook



london.ac.uk/flickr



london.ac.uk/instagram



london.ac.uk/issuu



london.ac.uk/linkedin



london.ac.uk/twitter



london.ac.uk/youtube

london.ac.uk/supply-chain