



UNIVERSITY
OF LONDON

2022

Professional Graduate
Certificate in
Education (PGCE):
Teacher Development

With academic
direction from:



Institute of Education

london.ac.uk/teacher-development

World class. Worldwide.

Join the World Class

1 **A mark of excellence**

Gain a University of London degree, deepen your knowledge and develop your career in the field of education.

2 **Quality of learning**

The programmes in this leaflet are developed by academics at the UCL Institute of Education, recognised as the world's leading university for Education in the 2021 QS World University Rankings.

3 **Worldwide relevance**

The programme is designed to be of worldwide relevance and has been updated to reflect online teaching common during the pandemic. You will collaborate online and share professional expertise with other students from diverse cultures, education systems and international contexts.

4 **Access a wealth of resources**

Comprehensive study materials written by subject experts at the Institute, as well as access to online discussions and tutorials.

5 **Flexible learning**

You can study from anywhere in the world, at your own pace and around your commitments. This programme offers progression opportunities to master's level courses.

Contents

PGCE: Teacher Development

Join the World Class	2
A global university centred around you	4
Why study the PGCE: Teacher Development?	6
Programme structure	8
Further information	9
How to apply and fees	10

Key dates

March 2022 session

Application deadline:
15 February 2022

Registration deadline:
22 February 2022

Programme begins:
1 March 2022

September 2022 session

Application deadline:
16 August 2022

Registration deadline:
30 August 2022

Programme begins:
6 September 2022

A global university centred around you

The Professional Graduate Certificate in Education (PGCE): Teacher Development programme joins a range of online courses offered through the University of London. The team at the UCL Institute of Education (who have written the programme and will be assessing it) are delighted to be part of this world-class provision.



Kim Insley

Programme Director

'The programme is underpinned with first-class research and when piloted it showed that teachers could change and develop their teaching through a framework which helps support reflection in and on practice.'

We look forward to seeing the new programme continue to support teacher development, help change practices in the classroom and in schools and so enhance world education.'

UCL Institute of Education

The UCL Institute of Education (IOE) is a world-leading school for education and social science. Founded in 1902, the Institute is a world-class centre of excellence for teacher training, higher degrees, research and consultancy in education and related areas of professional practice and the social sciences. The Institute hosts over 200 research and consultancy projects at any one time.

In the 2021 QS World University Rankings by Subject, the Institute was ranked as the world's leading university for Education for the eighth year running. Interim Director Professor Sue Rogers, said: 'I'm immensely proud of this achievement, which extends not only to IOE colleagues but to our fantastic students, partners and alumni. You have all played an important part in the IOE being ranked world number one for the eighth year in the row and will be integral in rebuilding lives and communities across the world as countries emerge from lockdown and for generations to come.'

A trusted name in global education

Founded in 1836, the University of London is one of the oldest and most prestigious universities in the UK and is internationally regarded as a centre of academic excellence. In 1858, we made our degrees available to study anywhere in the world.

Among former students are six Nobel Prize winners, including Nelson Mandela and Charles Kao, a pioneer in the development of fibre optics. Graduates have made and continue to make significant contributions worldwide.

Why study the PGCE: Teacher Development?

The PGCE: Teacher Development is delivered online with no requirement to come to the UK to study.

This programme can prepare you to go on to master's level study in Education through exploring teaching in your own setting. As a graduate of this programme, you will:

- develop and enhance your professional teaching and learning practice so as to respond to necessary changes in practice such as teaching online
- work with colleagues to engage and reflect on successful teaching practices, including your own
- understand your own teaching practice and other models of teaching practice in the context of research undertaken by UCL Institute of Education academics

- gain a University of London PGCE: Teacher Development (FHEQ Level 6). This equates to 60 credits, and the level of study is the same as in the final year of an undergraduate honours degree. It will help students who may not have had the opportunity to get an honours-level undergraduate degree when completing earlier study, and may also help qualify you for master's level study.

In some countries, qualifications earned by distance and flexible learning may not be recognised by certain authorities or regulators for the purposes of public sector employment or further study. We advise you to explore the local recognition status before you register, even if you plan to receive support from a local teaching centre. However, whether recognised or not, studying this programme will benefit your professional practice.

The programme does not offer UK Qualified Teacher Status (QTS).



How you study

The programme is delivered online and there is no requirement to come to the UK as part of your studies. It is a self-guided course, much like an enhanced MOOC, which has been designed to support your professional development. You will work alongside a self-identified Critical Friend and fellow students.

Your professional development will be supplemented and supported by our high-quality materials. Each module offers a structured learning experience with a coherent set of learning outcomes and assessment criteria to support you in your study.

Online support

When you register, we will give you access to the Student Portal. You can then access your University of London email account and other key resources including the:

- **Virtual Learning Environment (VLE)** which offers online learning support, access to peer-review software, reflective activities, informal discussion areas and links to resources
 - **Online Library** which contains thousands of journal articles. A dedicated helpdesk is available if you have any difficulties in finding what you need.
-

Study materials

All essential resources, activities, videos, discussions and support are provided through the VLE. This allows you to fit your studies around your work commitments. There is no need to purchase additional textbooks.

A handbook will also be provided so that your Critical Friend (who should not be your line manager or head teacher) understands their role. They will observe your professional practice, whether in person or using digital tools, and make notes to support reflective discussions.

Time commitment

The flexible approach to learning allows students to complete the programme in a minimum of one academic year to a maximum of two years.

Modules will run twice a year for added flexibility of study. Students undertake one module per session, starting with Module 1: *Thinking about Learning*.

Although there is flexibility in timing of modules, each module does have to be studied within its six-month presentation.

Programme structure



The programme comprises two core 30-credit honours level modules:

Module 1: Thinking about Learning

Module 2: Learning in Teaching

You will need to complete both modules successfully to be awarded the certificate. You must complete Module 1 activities before beginning Module 2 although final assessment does not have to have been completed. This means that the whole certificate will take place across two sessions.

Module 1: Thinking about Learning

You will study theories about how learning happens in the classroom and online, and what research tells us about learning. To achieve this, you will keep a learning journal based around your teaching role, which will help you reflect on your practice and your professional development as a teacher. This module will be assessed through

the submission of a portfolio which will include this learning journal, evidence of professional practice development following observations, responses to programme and Module 1 activities, and a short essay assignment.

Module 2: Learning in Teaching

This module focuses on assessment for learning and inclusion. It will help you understand the diverse needs of students. It will help you think beyond the course to your own professional development as a reflective practitioner. This module will be assessed through submission of three short essays, making up one assignment which explores the themes developed from the teaching of the module, plus a second submission of the portfolio updated to show activity during Module 2.

Assessment is based on the completion of coursework for each module, with no written examinations.

Further information

What qualifications do you need?

To register, you must fulfil the following criteria:

- undergraduate qualification or equivalent at FHEQ Level 5 or above (appropriate qualification/subject approved by University of London and checked against NARIC for compatibility)
- qualifications equivalent to an undergraduate degree will also meet the entry requirements for example, Pearson Level 5 certificates.

OR

- Cambridge International Examinations: Professional Development Qualification – Diploma (Level 5) which has been examined in English and studied between January 2015 and February 2017.

All applicants are expected to be working in a school setting in a teaching role (as a teacher, a teaching assistant or a volunteer), and sometimes they would have responsibility for the whole class as appropriate. This teaching can be face-to-face, online or hybrid (a mixture of both) – we recognise all forms and although online teaching can be a complex if it is new, during these challenging times, having the framework of the programme will help support practice.

Applicants normally should have completed the equivalent of two years of teaching before they commence study on the programme. The Programme Director will consider applicants with less experience, who present a

strong personal statement. These requirements are to be confirmed at application stage through references.

English language requirements

You must satisfy the English language requirements for the programme. For more information on the requirements please visit: bit.ly/english-reqs

If you do not meet the English language proficiency requirements but believe that you can demonstrate the requisite proficiency, the University may, at its discretion, consider the application.

Computer requirements

You will require regular access to a computer (or mobile device*) with an internet connection in order to study the programme. The computer should have at least the following minimum specification:

- a web browser with cookies and JavaScript enabled (a latest version of Firefox or Chrome is recommended)
- a good internet connection
- the following applications installed:
 - a word processor that accepts Microsoft Word formats (.doc and .docx)
 - a PDF reader.

*Full mobile access to VLE resources is not available for all programmes.

How to apply and fees

How to apply

Please refer to the PGCE: Teacher Development web pages for details on how to apply, application and registration deadlines and up-to-date information on course fees:

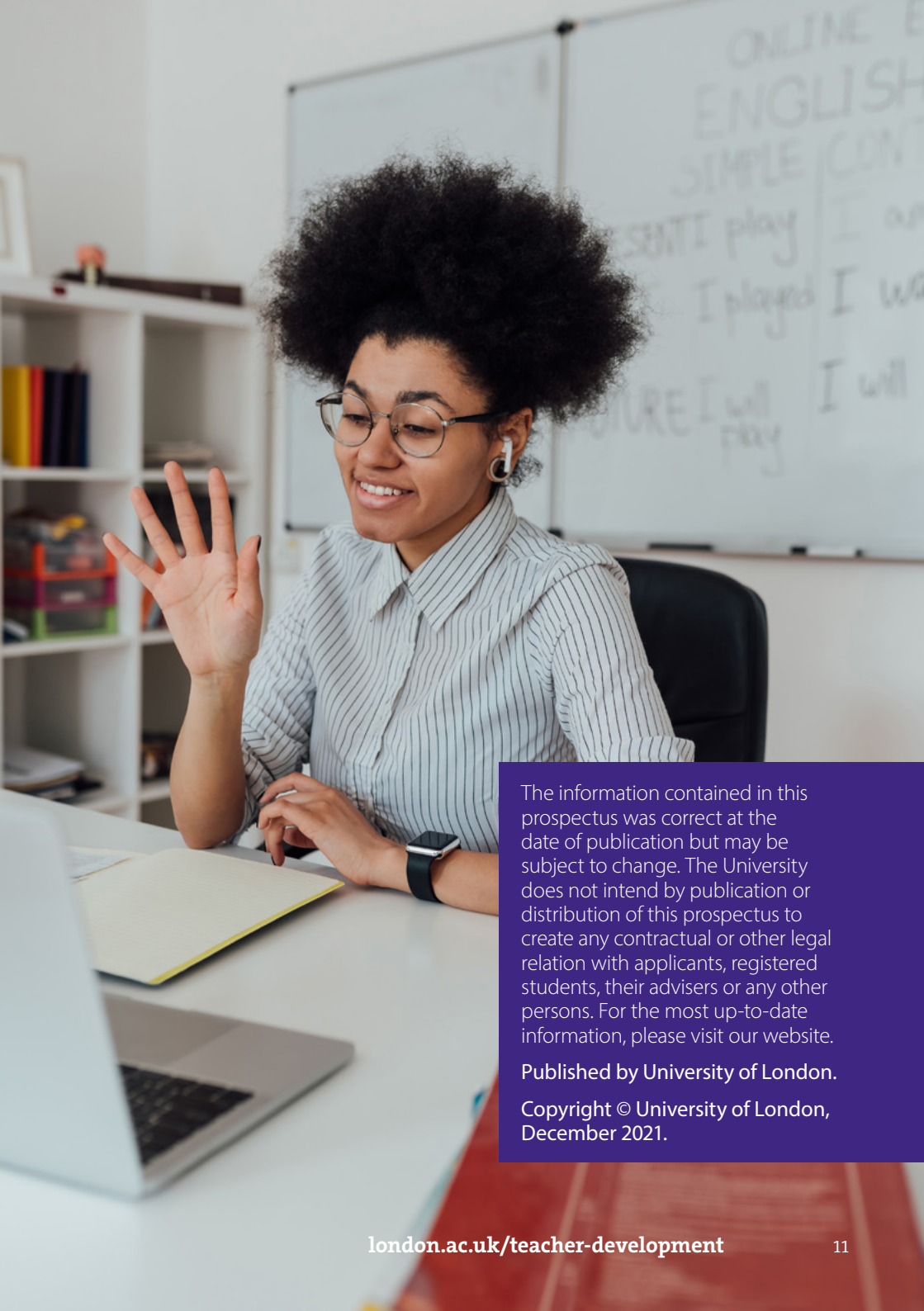
london.ac.uk/teacher-development

Fees

The total fee payable to the University of London for 2022–2023 will be published on our website once confirmed. On average, fees incur a five per cent year-on-year increase. For the latest information on programme fees, please visit: **london.ac.uk/fees**

Please note: student fees shown on our website are net of any local VAT, Goods and Services Tax (GST) or any other sales tax payable by the student in their country of residence. Where the University is required to add VAT, GST or any other sales tax at the local statutory rate, this will be added to the fees shown during the payment process. For students resident in the UK, our fees are exempt from VAT.





The information contained in this prospectus was correct at the date of publication but may be subject to change. The University does not intend by publication or distribution of this prospectus to create any contractual or other legal relation with applicants, registered students, their advisers or any other persons. For the most up-to-date information, please visit our website.

Published by University of London.

**Copyright © University of London,
December 2021.**

For further information on the range of programmes we offer, please visit our website (london.ac.uk) or contact us at:

The Student Advice Centre

University of London
Senate House, Malet Street
London WC1E 7HU
United Kingdom

Telephone enquiries: +44 (0)20 7862 8360

Online enquiries: sid.london.ac.uk



View the
**Teacher
Development**
web page

This material is available in alternative formats upon request.
Please contact: special.arrangements@london.ac.uk

Follow us on:



[london.ac.uk/
facebook](http://london.ac.uk/facebook)



[london.ac.uk/
flickr](http://london.ac.uk/flickr)



[london.ac.uk/
instagram](http://london.ac.uk/instagram)



[london.ac.uk/
issuu](http://london.ac.uk/issuu)



[london.ac.uk/
linkedin](http://london.ac.uk/linkedin)



[london.ac.uk/
twitter](http://london.ac.uk/twitter)



[london.ac.uk/
youtube](http://london.ac.uk/youtube)

london.ac.uk/teacher-development