

**AccessAble**

Your Accessibility Guide

The new name for DisabledGo

Senate House - Senate House Library

The University of London, Senate House, Malet Street, London, WC1E 7HU

020 7862 8000 (tel:020 7862 8000)

Visit website (<http://www.senatehouselibrary.ac.uk>)



Access Guide

Introduction

- Fourth Floor - Entrance Hall, Service Hall, Middlesex North Reading Room, Middlesex South Reading Room, Goldsmiths' Reading Room, Convocation Hall, Palaeography Room, Sterling Library, Dr Seng Tee Lee Seminar Room and various Library Collections
Fifth Floor - North Reading Room, South Reading Room and Various Library Collections
Sixth Floor - Accessibility Suite and Various Library Collections
Seventh Floor - Various Library Collections.
- The Senate House Library is located on the fourth, Fifth, Sixth and Seventh floors of Senate House - South Block.
- **Senate House - South Block link (new tab) - click here**
(<https://www.accessable.co.uk/venues/senate-house-south-block>).

- [Senate House - North Block link \(new tab\) - click here](https://www.accessable.co.uk/venues/senate-house-north-block)
(<https://www.accessable.co.uk/venues/senate-house-north-block>).

Opening Times (Senate House Library) (Term Time)

- Monday 09:00 - 20:45.
- Tuesday 09:00 - 20:45.
- Wednesday 09:00 - 20:45.
- Thursday 09:00 - 20:45.
- Friday 09:00 - 18:15.
- Saturday 09:00 - 17:15.
- Sunday Closed.

Opening Times (Senate House Library) (Vacation)

- Monday 09:00 - 17:45.
- Tuesday 09:00 - 17:45.
- Wednesday 09:00 - 17:45.
- Thursday 09:00 - 17:45.
- Friday 09:00 - 17:45.
- Saturday 09:00 - 17:15.
- Sunday Closed.

Getting Here

By Road

View

- Exiting the M1 at junction 1 onto the North Circular road, follow until the Brent Cross interchange and turn right here onto the A41. Follow the A41 road to the end and then turn right onto the Finchley Road. Following the A41 still, the road will become the B525, continue to the end of the road and turn left onto the Outer

Circle, then turn left onto Gloucester Gate and then right onto Albany Street. Follow this road till you reach the A501. Take the first exit onto the A400. Follow this road to find the building.

- There is on street parking available around the area, most of which is pay and display or for residents only. There is building parking for Senate House.

By Bus

[View](#)

- The nearest bus stop is Chenies Street (Stop D). The services that run to this stop are 14, 24, 29, 73, 134, 390, N5, N20, N29, N73, N253 and N279.

By Train

[View](#)

- The nearest train station is Euston. This is approximately a 10 minute walk away.

By Underground

[View](#)

- The nearest underground station is Goodge Street. This is approximately a 10 minute walk away.

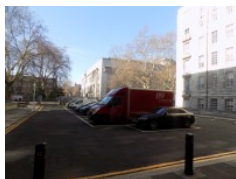
Useful Information

- **To see more information on Student Advice Centre please click here (opens new tab)** (<https://london.ac.uk/ways-study/study-campus-london/student-services-and-support>).
- Telephone Number: +44 (0)20 7862 8360.
- Offices for the Student Advice Centre are located in Senate House and Stewart House.
- **To see more information on Housing Services please click here (opens new tab)** (<https://housing.london.ac.uk/>).
- Telephone Number: +44 (0)20 7862 8880.
- Email: housing@london.ac.uk.

Building Parking (Malet Street)



Photos



1



2

-
- The building does have its own dedicated parking.

Building Car Park

[View](#)

- The car park can be used by permit holders.
- There are no parking charges that apply on the day.
- The car park is located off Malet Street.
- The car park type is open air/surface.
- The car park does not have a height restriction barrier.
- Designated Blue Badge parking bays are not available.
- The route from the car park to the building is accessible to a wheelchair user with assistance.
- Assistance may be required because there is / are slopes/ramps.
- The car park surface is tarmac.

Drop Off Point

[View](#)

- There is not a designated drop off point.

Building Parking (Russell Square)



Photos



1



2



3



4

- The building does have its own dedicated parking.

Building Car Park

View

- The car park can be used by staff, visitors and Blue Badge holders.
- There are no parking charges that apply on the day.
- The car park is located either side of the buildings centre.
- The car park type is open air/surface.
- The car park does not have a height restriction barrier.
- Designated Blue Badge parking bays are available.
- There is/are 2 designated parking bay(s) within the car park.
- The Blue Badge bay(s) is/are clearly marked.
- The dimensions of the designated parking bay(s) are 200cm x 600cm (6ft 7in x 19ft 8in).
- The dimensions of the designated bays do not vary in size.
- Parking spaces for Blue Badge holders do not need to be booked in advance.
- The nearest designated bay is 29m (31yd 2ft) from the main entrance to south wing.
- The route from the car park to the building is accessible to a wheelchair user with assistance.
- Assistance may be required because there is / are slopes/ramps.
- The dropped kerb between the car park and the building does not have tactile paving.
- The car park surface is tarmac.

Drop Off Point

View

- There is not a designated drop off point.

Outside Access (Walkway Area Between North and South Block)



Photos



1



2



3



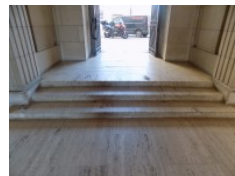
4



5



6



7

Entrance

View

- This information is for the entrance located off the Russell Square Car Park.
- There is ramped/sloped or stepped access at this entrance.
- There is not a bell/buzzer.
- There is not an intercom.
- There is a canopy or recess which provides weather protection at this entrance.
- The main door(s) open(s) both ways.
- The door(s) is / are double.
- The door(s) is / are permanently held open (at the time of the survey).
- The width of the door opening is 180cm (5ft 11in).

Ramp/Slope

View

- There is a ramp/slope at this entrance.
- The ramp/slope is located immediately beyond the entrance.
- The ramp or slope does bypass the step(s).
- The ramp/slope gradient is steep.
- The ramp is portable.
- The ramp does not have handrails.
- The width of the ramp is 123cm (4ft).

Step(s)

[View](#)

- There is a / are step(s) at this entrance.
- The step(s) is / are located immediately beyond the entrance.
- There is / are 3 step(s) to access the entrance.
- There is not tactile paving at the top and bottom of the step(s).
- The step(s) is / are not clearly marked.
- The step(s) is / are medium height (11cm - 17cm).
- The steps do not have handrails.

Comments

[View](#)

- There is a similar entrance off the Malet Street Car Park. This can be seen in photographs 4 and 5.
- There are three similar stepped entrances off both the Russel Square and Malet Street Car Parks. An example of which can be seen in photographs 6 and 7.
- After entering the Walkway Area, there is a separate entrance into both the North and South Blocks at either end of the walkway.

Entrance (South Block Entrance)



Photos



1



2



3



4

Entrance

View

- This information is for the entrance located off the walkway area between North and South Block.
- There is step free access at this entrance.
- There is not a bell/buzzer.
- There is not an intercom.
- The main door(s) open(s) away from you (push).
- The door(s) is / are double.
- The door(s) is / are permanently held open (at the time of the survey).
- The width of the door opening is 160cm (5ft 3in).
- There is a second set of doors.
- The main door(s) open(s) automatically (towards you).
- The automatic door(s) is / are push pad activated.
- The door(s) is / are single.
- The width of the door opening is 100cm (3ft 3in).

Comments

View

- There is also a revolving door by the second set of doors with a width of 160cm. This can be seen in photograph 4.

Reception (Senate House Reception)



Photos



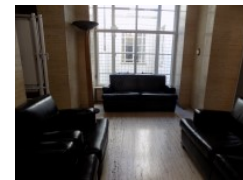
1



2



3



4

- Senate House Reception is located to your right on entrance.
- The desk is 5m (5yd 1ft) from the South Block Entrance.
- The reception area is clearly visible from the entrance.
- There is step free access to this reception area.
- The lighting levels in the reception area are bright.
- The reception desk/counter is high (110cm+).
- There is a low section of the counter (76cm or below) available.
- There is a clear knee recess beneath the low/lowered counter.
- The desk is staffed.
- There is a hearing assistance system.
- The type of system is a portable loop.
- The hearing assistance system is signed.
- Staff are trained to use the hearing system.

Comments

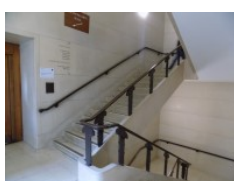
[View](#)

- The recess has a depth of 30cm.

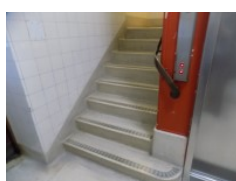
Other Floors (Senate House)



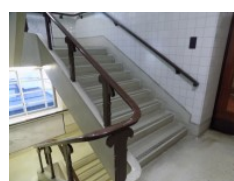
Photos



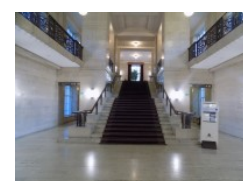
1



2



3



4

Steps

View

- The floors which are accessible by stairs are B, G, 1, 2, 3 and 4.
- The stairs are located to your left on entrance.
- The stairs are approximately 15m from the main entrance.
- There are 15+ steps between floors.
- There are manual, heavy, double doors to access the stairwell on all floors.
- The lighting levels are bright.
- The steps are clearly marked.
- The steps are deep (18cm+).
- The steps do have handrails.
- The steps have a handrail on both sides.
- There is a landing.
- There are alternate staircases located around the building examples of which can be seen in photographs 2, 3 and 4.

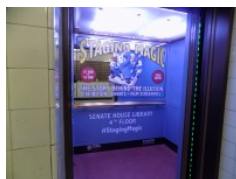
Lift (Senate House)



Photos



1



2

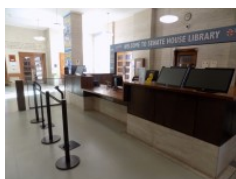
-
- There is a lift for public use.
 - The lift is located to your left on entrance.
 - The lift is a standard lift.
 - The floors which are accessible by this lift are B, G, 1, 2, 3 and 4.
 - Wall mounted information boards are not provided at lift landings.

- There are manual, heavy, double doors to access the lift lobby on the basement floor.
- The weight limit for the lift is 1350kg.
- The lift is approximately 8m (8yd 2ft) from the main entrance.
- Staff do not need to be notified for use of the lift.
- The clear door width is 118cm (3ft 10in).
- The dimensions of the lift are 133cm x 185cm (4ft 4in x 6ft 1in).
- There are not separate entry and exit doors in the lift.
- There is a mirror to aid reversing out of the lift.
- The lift does have a visual floor indicator.
- The lift does have an audible announcer.
- The lift has a hearing enhancement system.
- The lift does not have Braille markings.
- The lift does have tactile markings.
- The controls for the lift are within 90cm - 120cm from the floor.
- The lighting level in the lift is bright.

Reception (Senate House Library)



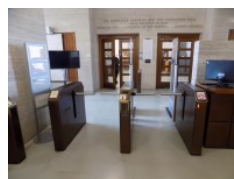
Photos



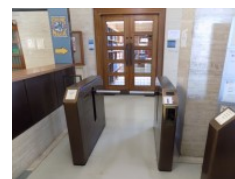
1



2



3



4

-
- Senate House Library is located in front of you on exiting the lift.
 - The desk is 5m (5yd 1ft) from the lift.
 - The reception area is clearly visible from the entrance.
 - There is step free access to this reception area, via lift.
 - The lighting levels in the reception area are bright.
 - The reception desk/counter is high (110cm+).

- There is a low section of the counter (76cm or below) available.
- There is a clear knee recess beneath the low/lowered counter.
- The desk is staffed.
- There is a hearing assistance system.
- The type of system is a portable loop.
- The hearing assistance system is signed.

Comments

[View](#)

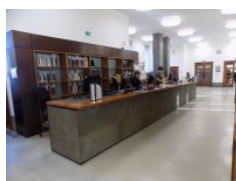
- There are barriers into the library to the right of the reception with a width of 92cm. These can be seen in photographs 3 and 4.
- Access for wheelchair users is via a staff-operated gate next to the Membership Desk. This gate is 100cm wide.
- There are a number of pass controlled accessible doors around the Library. Staff at the Membership Desk can enable a Library user's card to activate these doors.

Reception (Service Hall - General Enquiries / Issuing) (Senate House Library)

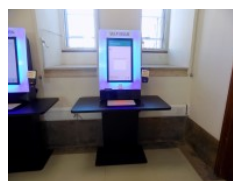
Photos



1



2



3

-
- General Enquiries / Issuing) (Senate House Library) is located through the doors to your right, on exiting the lift on the fourth floor. The left-hand set of doors is fitted with a clearly marked accessible pass controlled feature.
 - The desk is 15m (16yd 1ft) from the lift.
 - Clear signage for the reception area is not visible from the entrance.

- There is step free access to this reception area, via lift.
- The lighting levels in the reception area are bright.
- The reception desk/counter is medium height (77cm - 109cm).
- There is not a low section of the counter (76cm or below) available.
- The desk is staffed.
- There is a hearing assistance system.
- The type of system is a portable loop.
- Staff are trained to use the hearing system.

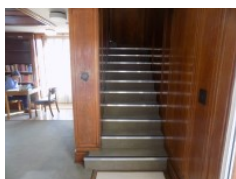
Comments

[View](#)

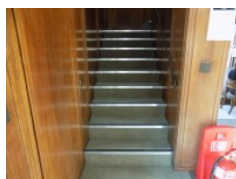
- The self-issue and self-return terminals have a touchscreen component to their use.
- There are issuing machines with heights of 160cm. As can be seen in photograph 3.

Getting Around

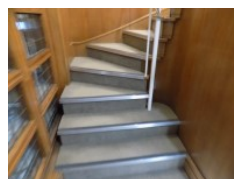
Photos



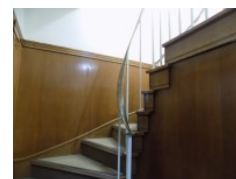
1



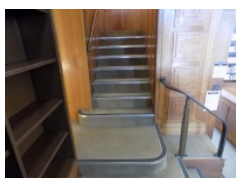
2



3



4



5



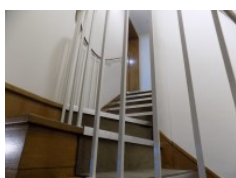
6



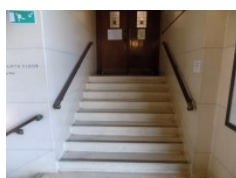
7



8



9



10

Access

[View](#)

- There is step free access throughout the area.
- There is/are 10+ clearly marked step(s), with a handrail on the left going up, for access to Middlesex North Gallery.
- The step(s) is/are deep (18cm+).
- There is not step-free access to any of the gallery levels on the 4th floor.

There are four sets of stairs to access each gallery all of which have deep steps.

There is one set directly opposite the one described above. This can be seen in photograph 2 . It is the same as the set of stairs described above except that it has a handrail on the right.

There is a separate spiral staircase which can be seen in photographs 3 and 4.

There is a set of stairs from the fifth floor which can be seen in photographs 5 and 6.

- There is/are 10+ clearly marked step(s), with a handrail on the left going up, for access to Middlesex South Gallery.
- The step(s) is/are deep (18cm+).
- The set of stairs described above can be seen in photograph 7. There are two other sets of stairs to the gallery on the fourth floor including the spiral staircase shown in photographs 8 and 9. There is also a separate set of stairs from the fifth floor.
- There is/are 8 clearly marked step(s), with handrails on both sides, for access to the south reading room on the fifth floor.
- The step(s) is/are deep (18cm+).
- The steps can be seen in photograph 10 and form part of one of the main staircases.
- There are no doors in corridors which have to be opened manually.

Getting Around

[View](#)

- There is clear signage for building facilities/areas in the foyer/reception area.

- There is clearly written and pictorial directional signage at key points of circulation routes.
- There is good colour contrast between the walls and floor in all areas.
- The lighting levels are good.
- This building does not play background music.
- There is a hearing assistance system.
- The system is a portable loop.

Library (Senate House London)



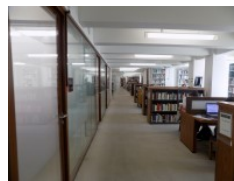
Photos



1



2



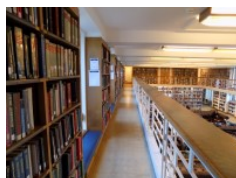
3



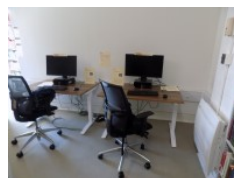
4



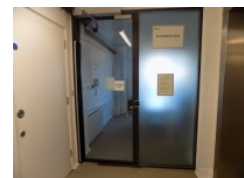
5



6



7



8

-
- This library does not have a regular supply of books in Braille.
 - This library does not have a regular supply of books in large print.
 - This library does not have a regular supply of books in audio format.
 - There is an ordering service.
 - The library does have computers with accessible software.
 - Auxiliary aids are available for computer users.
 - A height adjustable table and height adjustable chair is / are available.

Comments

View

- There are bookshelves in the library with widths of only 82cm between them.
- Accessible software includes ClaroRead Pro, TextHelp R&W, Mindview 6, Dragon Pro and JAWS.
- There is an accessibility suite located near to the lift on the sixth floor which is accessed by an automatic door and requires a user's Senate House Library card to be appropriately activated by Library staff to access. This can be seen in photograph 8.

Convocation Hall



Photos



1



2



3



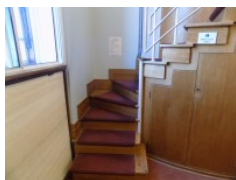
4

- The Exhibition Space is located in the Convocation Hall on the fourth floor.
- The gallery is accessed by a set of heavy double doors with a width of over 150cm.
- Two sets of doors to/from the Convocation Hall are fitted with an accessible pass controlled feature. This is clearly marked.
- This includes the doors to/from the Service Hall as well as the doors to/from the Periodicals Room (providing access to the Lift).
- Within this area there are televisions showing footage and information relevant to the exhibition.
- The flooring is shiny and may appear slippery.

Getting Around (Sterling Library)



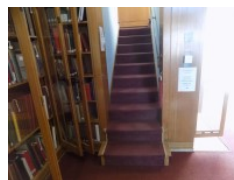
Photos



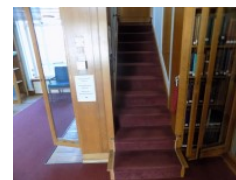
1



2



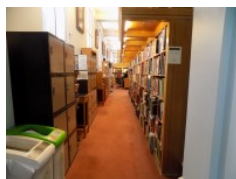
3



4



5



6

- There is/are 10+ unmarked step(s), with a handrail on the right going up, for access to South Gallery Catalogues of Manuscript repositories CC25.8 - CC28.
- The step(s) is/are deep (18cm+).
- The steps can be seen in photographs 1 and 2.
- There is/are 10+ unmarked step(s), with a handrail on the right going up, for access to Book Studies Classmarks 095-686.
- These steps can be seen in photograph 3. There is a similar set of stairs opposite to access the Palaeography Collection CC25.81 - CC25.85 and CC25.9 (codices). This can be seen in photograph 4.
- There is/are 10+ unmarked step(s), with a handrail on the right going up, for access to the gallery in the Dr Seng Tee Lee Centre.
- The step(s) is/are deep (18cm+).
- This can be seen in photograph 5.

Getting Around

View

- There is clear signage for building facilities/areas in the foyer/reception area.
- There is clearly written and pictorial directional signage at key points of circulation routes.
- There is some flooring in corridors which is shiny and could cause issues with glare or look slippery to some people.
- There is good colour contrast between the walls and floor in all areas.

- The lighting levels are good.
- This building does not play background music.
- There is a hearing assistance system.
- The system is a portable loop.
- The portable loop is located at the enquiries reception.

Comments

[View](#)

- The Palaeography Room is located off the Convocation Hall Exhibition Space on the fourth floor.
- The Palaeography Room contains the Palaeography Collection and is a supervised reading room for Archives, Manuscripts and Special Collections.
- Access is through the Palaeography Room to the Sterling Library and the Dr Seng Tee Lee Seminar Room.
- There is a step free access to many books and services with the Palaeography Room, Sterling Library and Dr Seng Tee Lee Seminar Room.

Reception (Palaeography Room)



Photos



1

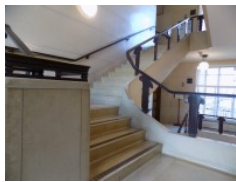
-
- Palaeography Room is located to the right of the building on the fourth floor.
 - The desk is 40m (43yd 2ft) from the lift.
 - Clear signage for the reception area is not visible from the lift.
 - There is step free access to this reception area.

- The lighting levels in the reception area are bright.
- The reception desk/counter is medium height (77cm - 109cm).
- There is not a low section of the counter (76cm or below) available.
- The desk is staffed.
- There is not a hearing assistance system.

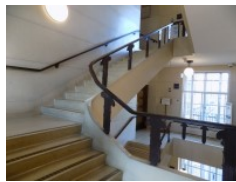
Other Floors (Library)



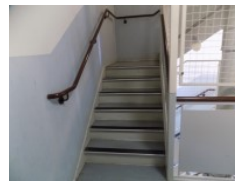
Photos



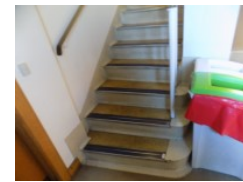
1



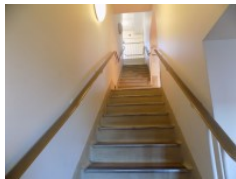
2



3



4



5

Steps

View

- The floors which are accessible by stairs are 4, 5, 6 and 7.
- The stairs are approximately 20m from the lift.
- There are 15+ steps between floors.
- The lighting levels are bright.
- The steps are clearly marked.
- The steps are deep (18cm+).
- The steps do have handrails.
- The steps have a handrail on both sides.
- There is a landing.
- There are two sets of stairs which access all floors (4-7).
One set of stairs is located to your left on exiting the lift. Access to these stairs is through the Library entrance gates.

The second set of stairs to all floors is located to the right of the library in the Service Hall which can be seen in photograph 3. There is a set of stairs in the Periodicals Room on the fourth floors which leads to the fifth floor. This staircase also accesses the gallery area between the floors and history books located there. These stairs can be seen in photographs 4 and 5.

Other

[View](#)

- The area(s)/service(s) on the floors which are not accessible is/are the seventh floor of the library.

Comments

[View](#)

- Lift access to the 7th floor may be arranged with staff at the Service Desk on the 4th floor.
- There is an Accessibility telephone on the 7th floor to contact staff to arrange lift access back to the 4th floor.
- There are also telephones on the 5th and 6th floors, which are marked on the floor plans, for users requiring staff assistance.

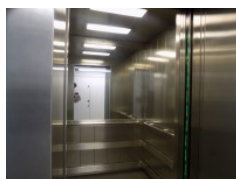
Lift (Library)



Photos



1



2

-
- There is a lift for public use.
 - The lift is located near the Periodicals Room.
 - The lift is a standard lift.
 - The floors which are accessible by this lift are 4, 5 and 6.
 - Wall mounted information boards are provided at lift landings.

- The weight limit for the lift is 1000kg.
- The lift is approximately 40m (43yd 2ft) from the Senate House main lift.
- Staff do not need to be notified for use of the lift.
- The clear door width is 90cm (2ft 11in).
- The dimensions of the lift are 110cm x 140cm (3ft 7in x 4ft 7in).
- There are not separate entry and exit doors in the lift.
- There is a mirror to aid reversing out of the lift.
- The lift does have a visual floor indicator.
- The lift does have an audible announcer.
- The lift has a hearing enhancement system.
- The lift does not have Braille markings.
- The lift does have tactile markings.
- The controls for the lift are within 90cm - 120cm from the floor.
- The lighting level in the lift is bright.

Accessible Toilet (Library)



Photos



1



2



3



4

-
- Accessible toilet facilities are available.

Location and Access

View

- The toilet is for the sole use of disabled people.
- There is tactile and pictorial signage on or near the toilet door.
- This accessible toilet is approximately 25m (27yd 1ft) from the Senate House main lift.

- This accessible toilet is located in the exhibitions area of the fourth floor within the Senate House Library.
- There is level access to this accessible toilet.
- This is by lift.

Features and Dimensions

View

- This is a shared toilet.
- A key is required for the accessible toilet.
- The key is a radar key.
- The key can be obtained from enquiries reception.
- The door opens outwards.
- The door is locked by a locking handle.
- The width of the accessible toilet door is 86cm (2ft 10in).
- The door is heavy.
- The dimensions of the accessible toilet are 176cm x 220cm (5ft 9in x 7ft 3in).
- There is a clear 150cm x 150cm manoeuvring space in the accessible toilet.
- There is a lateral transfer space.
- As you face the toilet pan the transfer space is on the right.
- The lateral transfer space is 110cm (3ft 7in).
- There is a dropdown rail on the transfer side.
- There is a flush on the transfer side.
- The tap type is lever.
- There is a mixer tap.
- There is an emergency pull cord alarm in the cubicle.
- The emergency pull cord alarm is fully functional.
- Disposal facilities are available in the cubicle.
- There is a/are female sanitary disposal units.
- There is a/are coat hook(s).

- There are coat hooks in the toilet at 128cm and 132cm from the floor.

Position of Fixtures

View

- Wall mounted grab rails are available for the toilet.
- As you face the toilet the wall-mounted grab rails are on both sides.
- There is not a shelf within the accessible toilet.
- There is a mirror.
- Mirrors are not placed at a lower level or at an angle for ease of use.
- The height of the toilet seat above floor level is 48cm (1ft 7in).
- There is not a hand dryer.
- There is a towel dispenser.
- The towel dispenser cannot be reached from seated on the toilet.
- The towel dispenser is not placed higher than 100cm (3ft 3in).
- There is a toilet roll holder.
- The toilet roll holder can be reached from seated on the toilet.
- The toilet roll holder is not placed higher than 100cm (3ft 3in).
- There is a wash basin.
- The wash basin can be reached from seated on the toilet.
- The wash basin is not placed higher than 74cm (2ft 5in).
- There is a soap dispenser.
- The soap dispenser can be reached from seated on the toilet.
- The height of the soap dispenser is 96cm.

Colour Contrast and Lighting

View

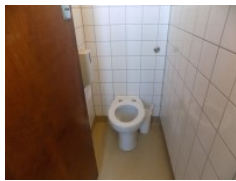
- The contrast between the internal door and wall is good.
- The contrast between the external door and wall is good.
- The contrast between the wall-mounted grab rail(s) and wall is good.

- The contrast between the dropdown rail(s) and wall is good.
- The toilet seat colour contrast is good.
- The contrast between the walls and floor is fair.
- The lighting levels are poor.

Standard Toilet(s) (Library)



Photos



1



2

Location of Standard Toilet(s)

[View](#)

- There are female standard toilets facilities on the fourth floor.
- There are male standard toilets facilities on the fourth floor.

Standard Toilet Surveyed

[View](#)

- A male standard toilet was surveyed.
- The toilet surveyed is located in the fourth floor stairwell.
- There is step free access to the standard toilet(s) surveyed from the entrance.
- The standard toilet surveyed is approximately 20m from the Senate House main lift.
- There is not a/are not cubicle(s) suitable for ambulant disabled people in the standard toilet(s) surveyed.
- Lighting levels in the standard toilet surveyed are good.