



UNIVERSITY
OF LONDON
VENUES

Stewart House event spaces

Rate card

CONTENTS

Welcome	2
Reception	3
Hospitality service	4
Rooms 8+9+10	5
Rooms 11+12+13	6
Boardrooms	7

ABOUT THE SPACE

Conveniently located in the heart of Bloomsbury, Stewart House is a fully accessible, self-contained events centre on the University of London estate.

Its 17 flexible spaces range in capacity from 10 to 100 and can be configured to suit many uses, making the centre ideal for training events and conferences as well as longer-term office space solutions. Whatever your requirements, we offer packages to suit a range of budgets, with catering options provided by our experienced hospitality team.

To speak to your personal event coordinator for further information or to book a consultation, please contact: uolevents@london.ac.uk

IMPORTANT NOTES

All indoor spaces include a standard AV package, for more details ask Events Team.

Costs may vary for other colleges, registered charities and Member Institutions.

PRS charges may be applicable.

Deposits are payable upon confirmation of booking.

Capacities are subject to licensing, access/egress and event layout/type.

All costs shown exclude all utilities, servicing and estates management charges where applicable.

Costs for filming are separate please contact: filming@london.ac.uk

3D TOURS

Floor plan

Click the button below to view our floor plan in 3D and get a better feel for the space and see it from different angles.

[Experience the 3D floor plan](#)

Video

Let us show you around by clicking the button below to take a virtual tour and envision how your next event here might look.

[Watch the event space video](#)

RATES

Booking type	Full day
Commercial rate	£6,000
Charity rate (10 per cent discount)	£5,400
Federation Member rate (15 per cent discount)	£5,100



The reception area is the central hub of the conference centre, where guests are welcomed, and venue event services staff are located.



The Stewart and Russell rooms are used for our hospitality service.

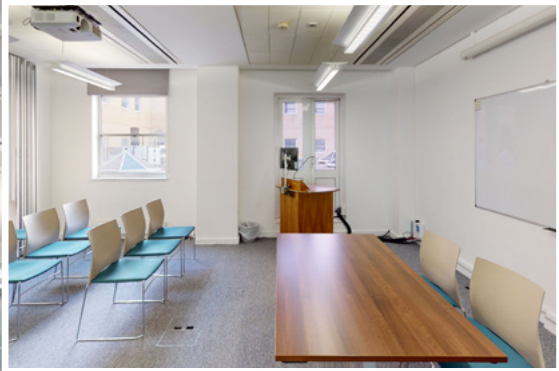
Seating	Capacity
Standing	100



ROOMS 8+9+10

Rooms 8 + 9 + 10 combined is the largest event space in the conference centre that can accommodate up to 95 people for main plenary sessions, or be divided up into three smaller breakout spaces if required.

Seating	Capacity
Theatre	95
Cabaret	50
Boardroom	50
Horseshoe	50



ROOMS 11+12+13

Rooms 11+12+13 combined is our medium sized event space, that can accommodate up to 50 people theatre style, or be divided into three smaller breakout spaces if required.

Seating	Capacity
Theatre	95
Cabaret	50
Boardroom	50
Horseshoe	50



BOARDROOMS

There are 10 Boardroom spaces. These are a variety of smaller event spaces which accommodate up to 10 people per room, and are perfect for smaller meetings or additional breakout spaces.



Room 14



Visit the **Venues**
website

For further information on events and hospitality,
please contact us:

Online enquiry form: london.ac.uk/venues/contact-us

Email enquiries: uolevents@london.ac.uk

The information contained in this document was correct at the
date of publication but may be subject to change.

Copyright © University of London

Follow us on:



@UniversityofLondonVenues



@UniversityofLondonVenues

london.ac.uk/venues